

The
Brookwood Cemetery

*“where solitude herself may find peace
midst the Surrey pines”*

and

The
Glades of Remembrance

*“for the more permanent commemoration
of those who prefer cremation”*

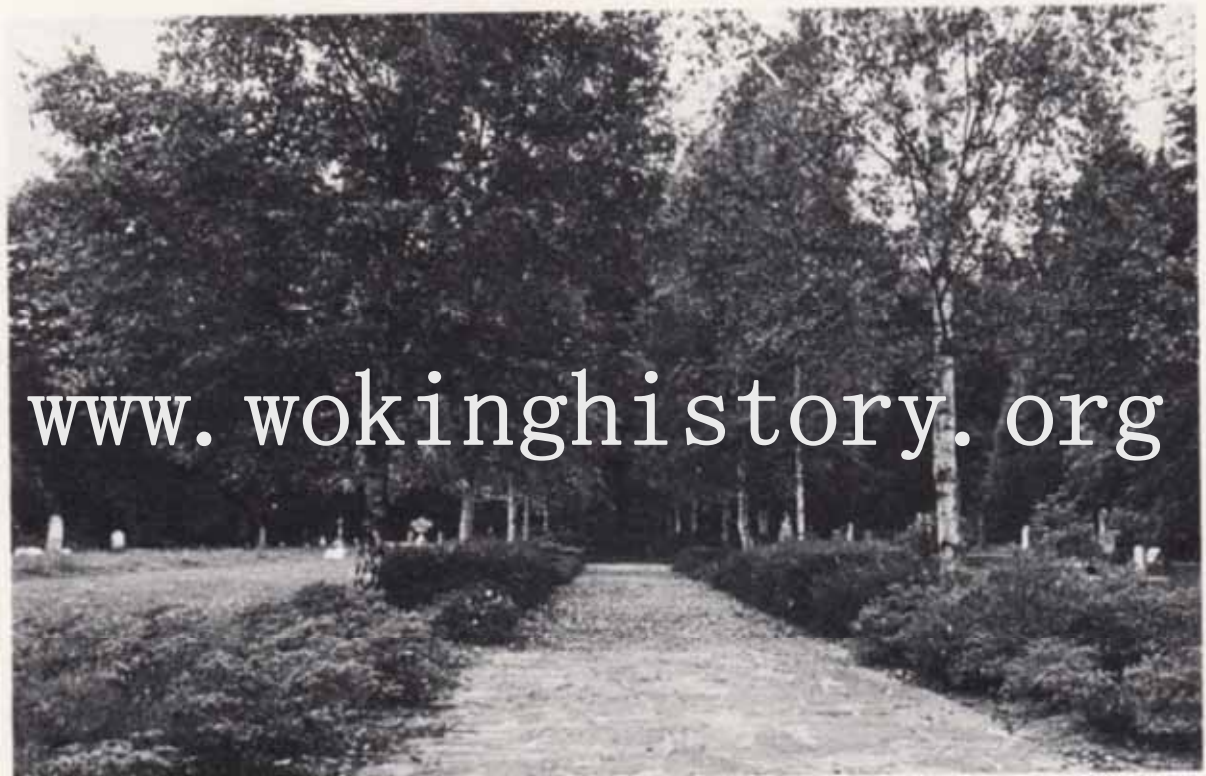
In 1850 Parliament ordered the closure of the more crowded churchyards in London, and a search was commissioned for a new site of sufficient size and splendour to serve the burial needs of the Metropolis for at least 500 years. To meet these demanding requirements The Brookwood Cemetery was created, and, after incorporation by Royal Act of Parliament in 1852, it acquired more than 2,000 acres of land from the Earl of Onslow just 25 miles from the centre of London at Woking in Surrey.

With typical Victorian extravagance some 400 acres of Surrey countryside was carefully landscaped, and a wealth of exotic trees and shrubs planted under the guidance of the leading gardeners from Kew. Perhaps as a reaction to the crowded and unsightly burial grounds of London, every effort was made to ensure that Brookwood was beautiful, spacious and tranquil. The spot chosen was an ideal one for its purpose, and now that the natural charm has been enhanced by those early plantings reaching full maturity, there is perhaps no more restful cemetery in the world. Trees of every kind flourish—silver Birches and copper Beeches add beauty with their contrasting foliage, and stately Wellingtonias stand like giant sentinels. Despite the profusion of trees and shrubs, nothing has been allowed to blot out the rich purple of the native heather and the gorgeous masses of rhododendrons, which are in perfect harmony with the surroundings. Indeed, it seems impossible to realise that Central London is no more than 30 minutes by train.

www.wokinghistory.org

Today more than 120 years after its inception The Brookwood Cemetery continues to provide a final resting place for people from all over the world. The quiet splendour of the grounds and the spacious setting cannot fail to impress the visitor, and wandering about the Cemetery one frequently meets with names that in their time were as familiar as household words. Here is a Royal Prince, there a Chancellor of the Exchequer, here a Lord Chief Justice, there a noble Peer. One is also bound to notice the many fine monuments, some with ornate stonework and embellishments, shaped by notable craftsmen whose art is no longer found in such rich abandon. Visitors might be interested in the famous memorial unveiled by the Queen, the many little chapels, the family mausoleums and statues.

The hustle and bustle of everyday life has not been permitted to make its mark on Brookwood and an aura of peacefulness still predominates. It is difficult to conceive of anything more dignified than the way in which funerals are conducted and even the most fastidious would be well pleased. Relatives may leave their loved ones in this special place knowing that they rest in peace amongst the Surrey pines.

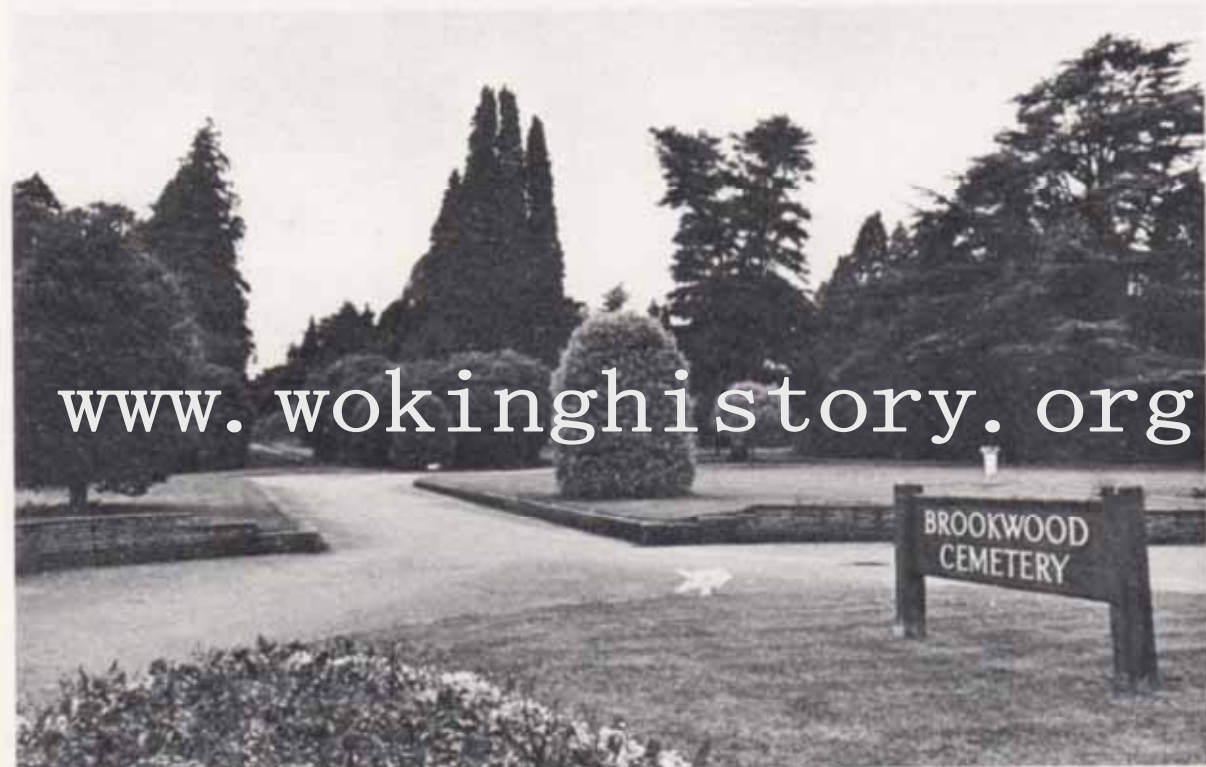


www.wokinghistory.org

One of the many avenues

"The Cemetery itself is of immense extent, in the centre of a lovely country, and produces a sense of peace, quietude and freedom, which is sadly lacking in the congestion of the cemeteries in and around the Metropolis."

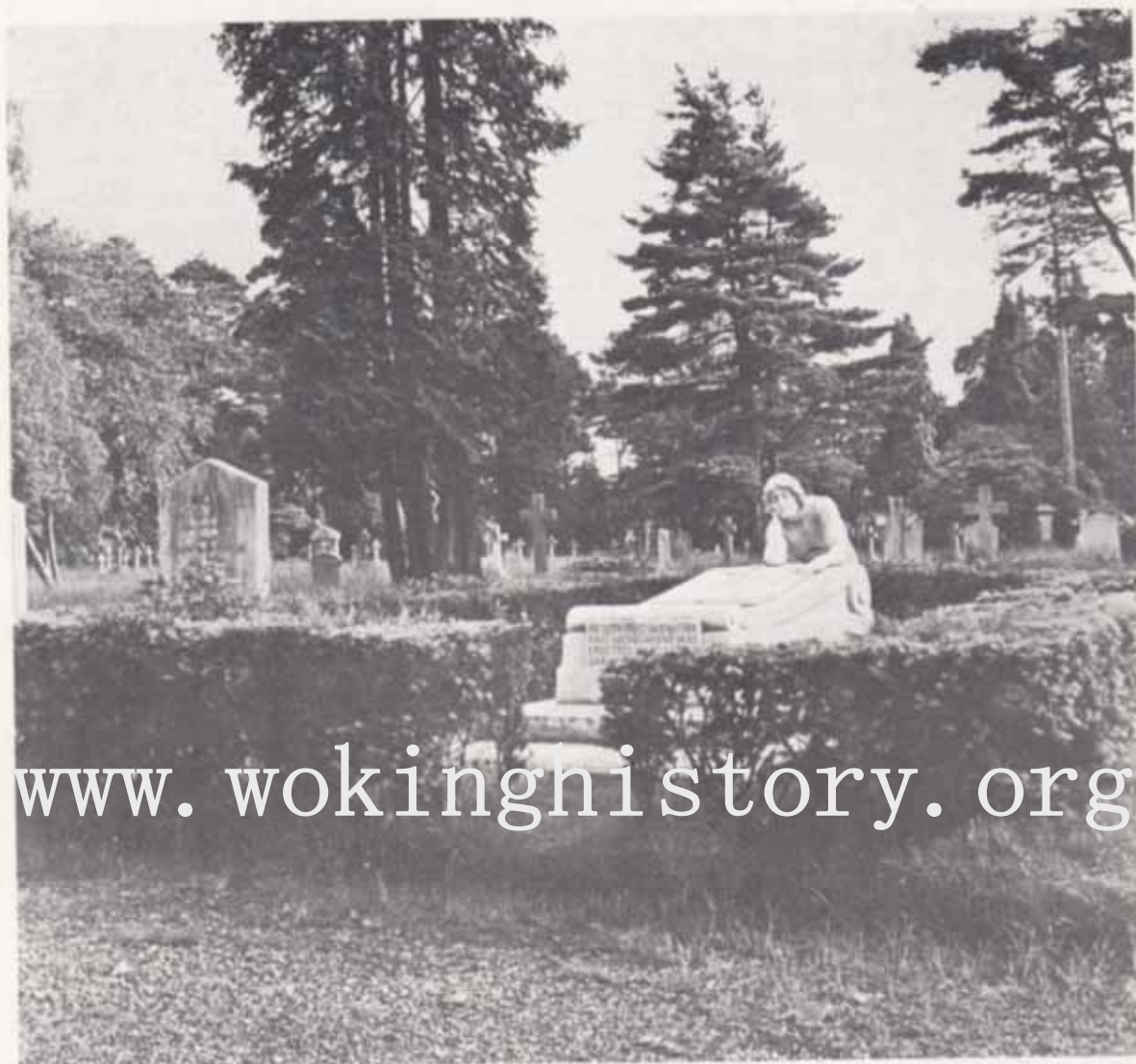
—The Times



www.wokinghistory.org

A view from the entrance

NEEDS OF THE FAMILY



A family site on one of the main avenues

There is a great love and sense of belonging which binds together families in times of loss and bereavement. The Brookwood Cemetery knows the strength of this bond and has always had the greatest respect and understanding for family feelings. Special care and attention is, therefore, devoted to providing an environment in which families can cherish the memory of their relatives, and preserve, even in death, the bond given in life. Not for Brookwood are the serried ranks common to most other burial grounds—the selection of each site is a matter for individual choice to take account of personal wishes and requirements. Nor today are reopenings encouraged with the consequent provisions necessary for multiple interments in one grave. Above all else, The Brookwood Cemetery is spacious, so the natural desire for families to be close is more thoughtfully accommodated by allowing relatives to choose their own family site with sufficient space for the burial of each member next to one another. Family areas may range from large privately screened sites to the simple double allotment. Arrangements may be made by reserving the chosen site in advance of need or at the time of the first interment.

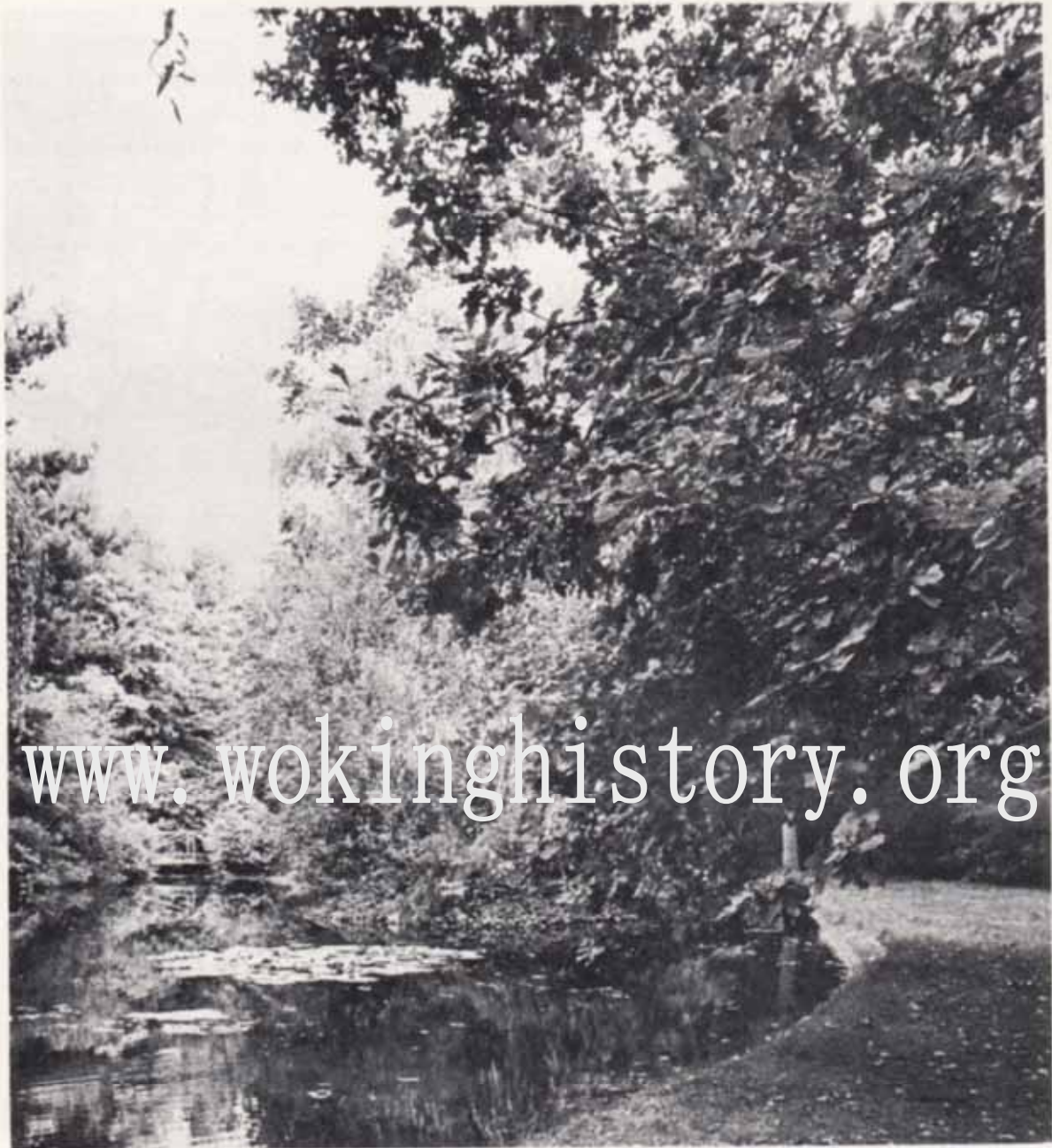
COMMUNITY AND ETHNIC GROUPS

There are many different circumstances in life which draw men together —sometimes it is race or religion, sometimes vocation or profession. Such groups often possess a strong sense of fellowship and many wish to be remembered by the common bond which unites them. The Brookwood Cemetery is perhaps unique in the way in which it is able to create private commemorative grounds within its great complex for special groups according to each one's particular requirements. At Brookwood today there are church congregations who have privately screened areas to replace their own churchyards long since filled. There are areas for national groups like the Swedes and ethnic groups like the Latvians, for the Chelsea Pensioners and for the Ancient Order of Foresters, and there are large individual areas for almost all religious denominations. Many groups already have permanent arrangements, and many more may come to share in the beauty and tranquillity of the surroundings.



A view of the Latvian burial ground

THE GLADES OF REMEMBRANCE

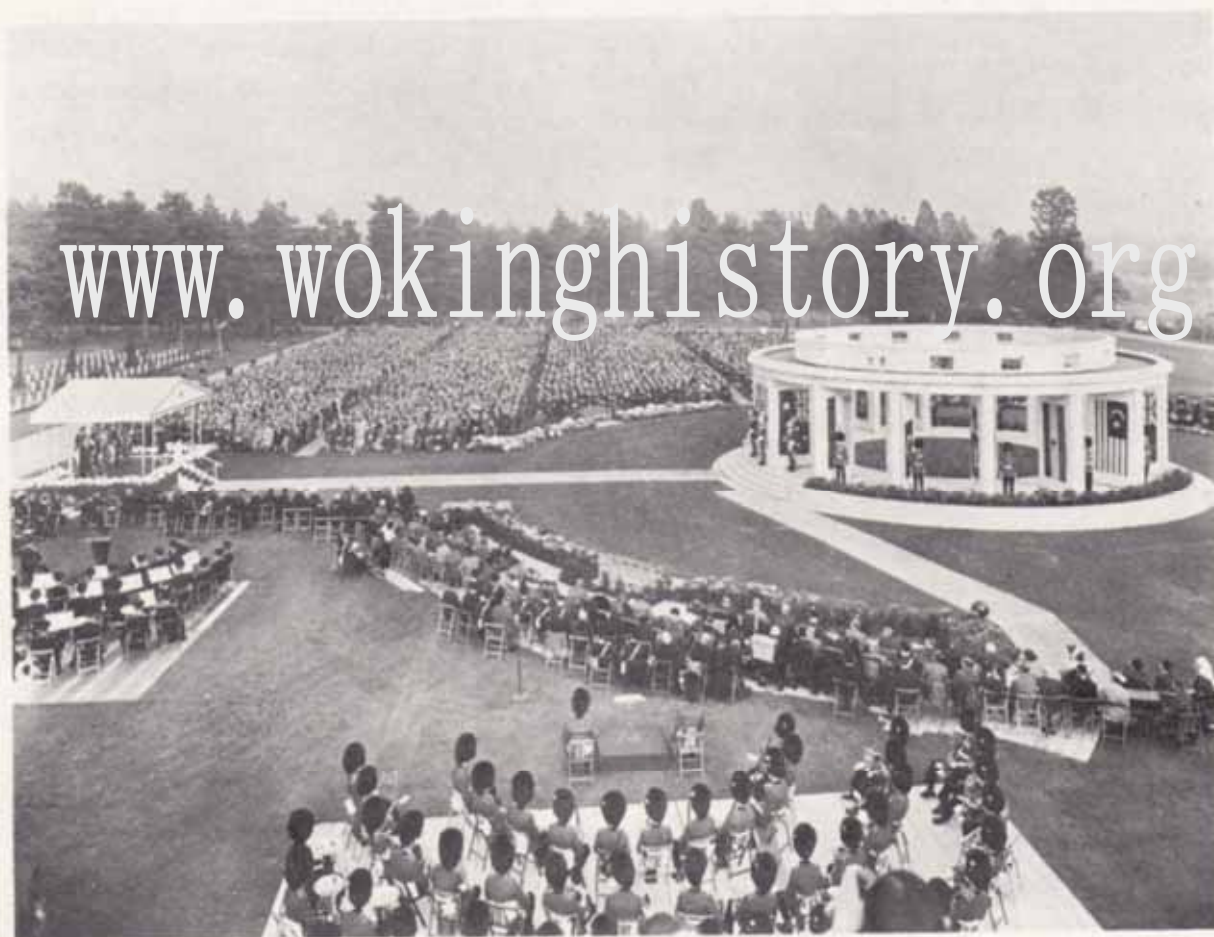


A view of the ornamental lake

The Glades of Remembrance was created some 25 years ago in response to the demand for a more permanent form of commemoration as an alternative for those who prefer cremation. The Glades, set in some 20 acres of magnificent wooded gardens with leafy glades and an ornamental lake, provide a truly private resting place in which ashes may be scattered or interred. The choice of each site, whether for the individual or the family, is a matter of personal preference and small monuments or memorials may be erected in the memory of those who rest here. For those cremated many miles away the management will always make suitable arrangements, in conjunction with Funeral Directors, for the transportation of ashes and choice of sites.

THE MILITARY SECTION

The Brookwood Cemetery boasts an impressive Military Section which is run under the supervision of the Commonwealth War Graves Commission. Here in perfect contrast with the civilian areas, the war casualties of many allied nations lie in poignant rows of true military precision. Each nation has its own special area and these can be identified by the impressive national monuments in memory of those who died for their country. But perhaps the most impressive monument of all is The Brookwood Memorial, unveiled by the Queen in 1958 in memory of the Allied war dead, who fell with no known grave. The monument itself is a magnificent rotunda of Portland stone standing on a low paved platform and surrounding a grassed court open to the sky. The names of those commemorated are carved on panels of green slate inset upon the faces of the supporting piers.



The Queen opening The Brookwood Memorial

THE BROOKWOOD CEMETERY
AND
THE GLADES OF REMEMBRANCE

Facilities and Services:

- Burial on private selected sites in graves, crypts and mausoleums.
- Provision of selected sites for interment or scattering of ashes.
- Provision of private grounds for family commemoration.
- Provision of private grounds for community and ethnic groups.
- Special commemoration of those buried or cremated elsewhere.
- Reservation of sites in advance of need.

Costs and Charges:

This booklet is not intended to be a price list, but it may be helpful to indicate that selected sites start from £65 in The Brookwood Cemetery and from £50 in The Glades of Remembrance. All facilities and services may be varied to suit individual requirements and choice.

www.wokinghistory.org

Enquiries:

All enquiries to the General Manager at The Brookwood Cemetery, Woking, Surrey, or telephone—Brookwood 2222 (STD code 04867).

Directions:

By Car

From Woking take the A324 westwards—in due course turn left onto the A322 towards Guildford—then take the first right and the Cemetery will be immediately visible on both sides of the road.

By Train

From Waterloo take the Southern Region service through Woking, alight at Brookwood Station where the Cemetery has its own entrance direct from the station.

Proprietors:

Brookwood Cemetery Limited, Woking, Surrey.