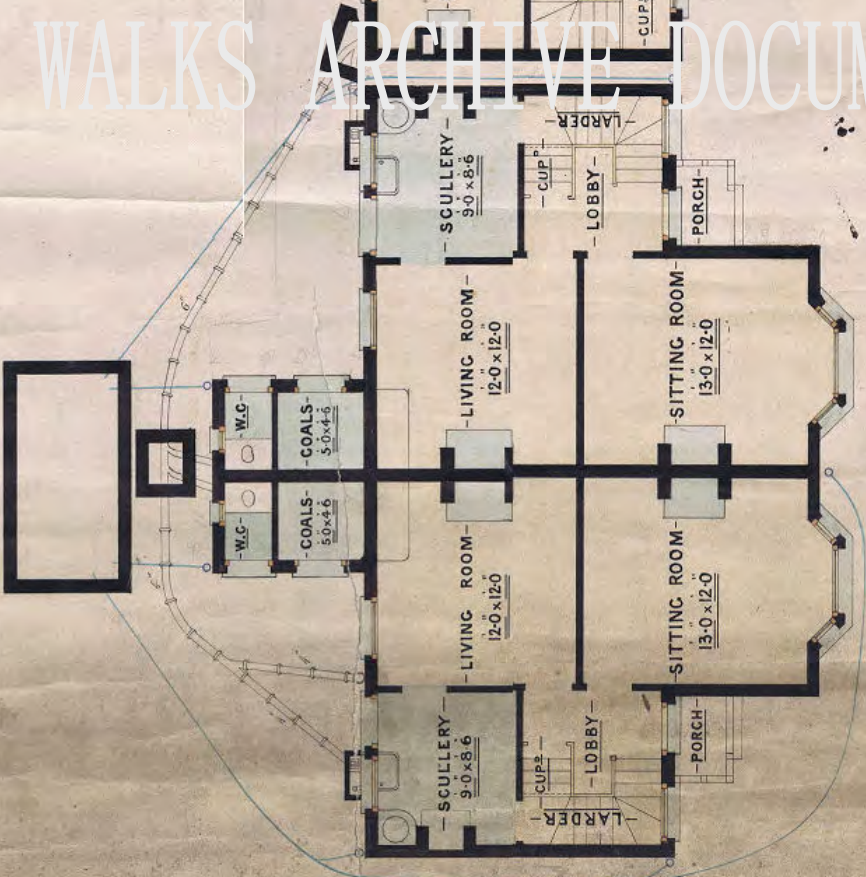


See also the drawings referred to in the Specification & Contract signed by me this eleventh day of January 1899.

signed William H. Gale
 Floor line - witness to the above signature J. L. Lacey

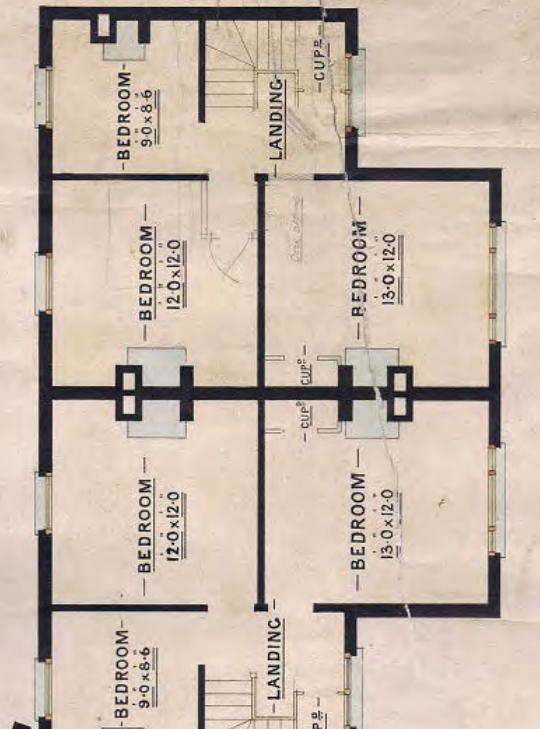


SECTION



GROUND PLAN

Scale 1/40 of an inch = 1 foot.



BEDROOM PLAN

G. J. Woodbridge
 DEC 9 1898

HERITAGE WALKS ARCHIVE DOCUMENT