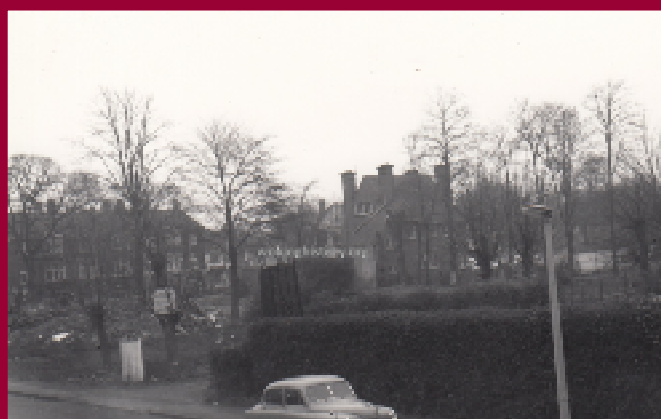


LATE 60's 'LUXURY' HOTELS

(AND OTHER ACCOMMODATION IN WOKING)

Iain Wakeford 2019

In September 1968 a new hotel opened in West Byfleet claiming to cater for 'executives of many newly arrived commercial firms and their guests', who had previously had 'to travel to Woking and Weybridge to obtain over-night accommodation'.



The Sheer House Hotel in West Byfleet was demolished in the early 1960's to make way for the new shopping centre, library and office block - leaving a gap in the market for Mr Crown to fill with his new hotel.

The new hotel was also partially filling the gap that had been vacated earlier in the decade by the closure of the nearby Sheer House Hotel (when the new shopping centre of that name was built). Called 'Crown's House Hotel', the new venture was the idea of Mr Richard Crown and his family, who at the time also owned coffee bars in both Woking & Addlestone.

Crown's House Hotel was in the Old Woking Road (next to the Rosemount Service Station). It had previously been a private house - the lawns and flower-beds of which were now apparently overlooked by the 'attractive lounge and dining room seating twenty-five', furnished with 'luxury tables and chairs' where diners could enjoy a menu 'equal to those provided by West End restaurants'.

Richard Crown, along with his wife and daughter, opened the new 'Crown's House Hotel and Restaurant' in September 1968

NOW OPEN
CROWN'S HOUSE HOTEL & RESTAURANT
(LICENSED)
WEST BYFLEET
Extensive Menu
Large Wine Cellar
Car Park
Outside caterers for all functions including Weddings, Parties, Etc.
Telephone Byfleet 44431



Crown's House Hotel

81 OLD WOKING ROAD

Telephone Byfleet 44431

Situated adjacent to the shopping area, Crown's House Hotel is small but very comfortable, offering an extensive menu and wine list in the Restaurant, which is open to Non-Residents.

The Proprietor, Mr. Crown, has had many years of Catering experience, and specialises in functions in Clients homes, also Marquees and Halls.

West Byfleet Station is on the main line to London and is within three minutes walk from the Hotel.

LARGE CAR PARK

Prices for the nine double bedrooms ranged from 37s.6d (£1.88) to 5 guineas (£5.25) per night, with Mr Crown happy to welcome 'all sections of the community'. "I am just as

pleased to serve fish and chips as I am caviar and smoked salmon. Every person receives the same personal attention no matter what their requirements," he said.



THE BYFLEET HOTEL

OUTSIDE WEST BYFLEET STATION

— BYFLEET 45048 —

Residential

Lunches

Dinners

Receptions

Three spacious
bars

Open to
non
residents

Private
Parties

Off
Licence



Your hosts, Bill and Rosa Clay

Across the railway, the Byfleet Hotel was, and still is, welcoming guests.

The Blue Anchor at Byfleet (under new management in August 1969) also still has accommodation...



BYT.54 THE BLUE ANCHOR, BYFLEET

COPYRIGHT
FAITH LTD

... as does the Wheatsheaf at Horsell, which in the late 1960's had recently increased in size.

Of course the new venture was not the only hotel in West Byfleet, with Bill and Rosa Clay on the other side of the railway at the Byfleet Hotel also happy to advertise their services to the community, and in nearby Byfleet the Blue Anchor Hotel (under new management in August 1969) was also welcoming guests – although I suspect minus the caviar and smoked salmon (and the five guinea price tag)!

That, of course, was the problem in this area at that time (and for many years to come), as the number of rooms for hire was limited and mostly in small, family run, hotels with much of the accommodation probably leaving a lot to be desired.

The 'executives' that had previously had to travel to Woking may not have been too impressed with what they found there either, especially after the old Albion Hotel (opposite the entrance to the station) had closed in the

mid 1960's. The nearby Red House Hotel and the Railway Hotel on the opposite side of the station were probably not quite up to standard, and even the Cotteridge Hotel on the corner of



The Cotteridge, on the corner of Constitution Hill and Guildford Road, has long gone

Constitution Hill and Guildford Road, and the newly expanded Wheatsheaf Hotel at Horsell were not exactly known for their caviar and smoked salmon.

There were still a few 'private hotels' such as the Northfleet in Claremont Avenue, and the Crosslee Hotel in Heathside Crescent, but the slightly larger Heathside Hotel in Coley Avenue had recently closed and by 1969 the site was being redeveloped with old people's accommodation by Surrey County Council.

Those seeking 'executive suites', and accommodation for conferences and 'trade shows', had to look beyond the confines of the town centre to places such as the two star 'Mayford Manor Hotel' at Maybourne Rise, on the lower slopes of Pyle Hill (off the road from Woking to Guildford), where, if the picture on this early 1970's advertisement can be believed, there was even room to 'park' your helicopter on the lawn!

A lot has changed since those days – the Mayford and Crown's House have long gone (the latter now The Yeoman Harvester Restaurant), and although many new large hotels have opened their doors in the town in recent years, there is obviously still a place for the small, family run, establishment – the Blue Anchor and the Byfleet Hotel (now called The Station) still offering accommodation.

No longer can 'executives' park their helicopter on the lawn of the ** Mayford Manor Hotel.

Mayford Manor Hotel

GUILDFORD ROAD (A320)
WOKING



* *



* *

FULLY LICENSED



*Under the Personal Supervision of the Owner
M. B. V. BLEWETT*

ACCOMMODATION

Executive Suites

A choice of Bedrooms with or without Private Bathrooms
Central Heating Drying Room

WEDDING RECEPTIONS BUSINESS CONFERENCES
TRADE SHOWS

BAR AND RESTAURANT

Open to Non-Residents

COURTEOUS AND HELPFUL STAFF AT YOUR SERVICE