

THE OFFICIAL GUIDE.

THE  
HOMELAND 1/- Nett  
1/- Nett  
HANDBOOKS

WOKING & RIPLEY

With their Surroundings.

WITH ORDNANCE MAP AND PLAN.



Price: ONE SHILLING Nett.  
WOKING: S. E. STEER, Chobham Road,  
and of all Booksellers.  
LONDON: THE HOMELAND ASSOCIATION, LTD.,  
22, Bride Lane, Fleet Street, E.C.



VOL. 42 OF THE SERIES.

1st EDITION.

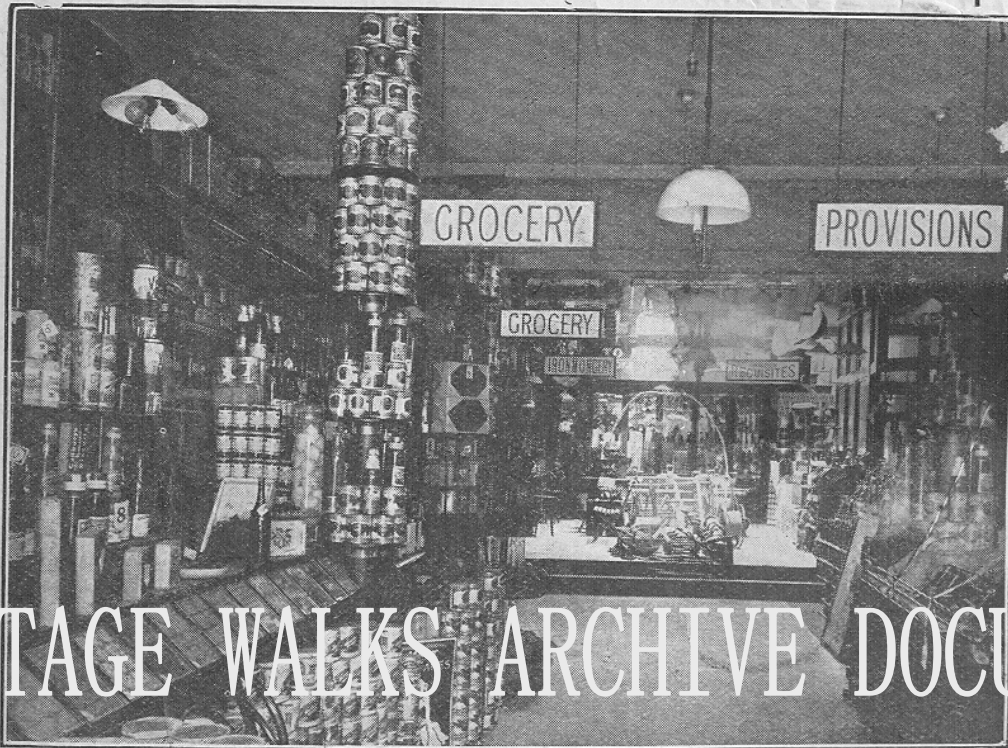
HERITAGE WALKS ARCHIVE DOCUMENT

## WHERE TO SHOP AT WOKING.

Telephone  
Number  
0168.

**IVENS' STORES, WOKING.** (Opposite Post Office)

Wise Housewives who Study  
Economy are invited to send for our **NEW PRICE LIST.**



### GROCERIES

of all kinds are kept in the largest possible variety, and a glance through our List will prove our ability to meet your requirements.

### PROVISIONS

in richest profusion can be procured from us, and the fact that we sell it is, in itself, a guarantee of high quality.

### DOMESTIC IRONMONGERY

and Household Requisites generally are stocked, and a look

round our Showroom will be well repaid.

### THREE FACTS WORTH NOTICING.

No. 1—Prices for Cash are the same as London Store Prices.

No. 2—Families are waited on for Orders Daily.

No. 3—All Goods are delivered FREE.



**London & South-Western Railway.**

**EXPRESS SERVICE.**

**LONDON  
AND WOKING**

**In 32 minutes.**

**About Fifty Trains Daily**  
in each direction.

**CHEAP TICKETS FROM WOKING**  
during the Summer.

**HALF-DAY TRIPS TO LONDON**

on **Wednesdays** by all trains after 12.0 noon. Fares—1st, 5/0;  
and, 3/3; 3rd, 2/0. Also bookings in connection with

**FAST EXCURSIONS FROM LONDON**

(WATERLOO STATION) to the principal

**HEALTH AND PLEASURE RESORTS**

OF THE

**SUNNY SOUTH**

and South-West Coasts,

**DEVON, CORNWALL, ETC.**

For full particulars of Train Services, Cheap Fares, etc., see  
announcements, obtainable at the Company's Stations and Offices; or  
from Mr. HENRY HOLMES, Superintendent of the Line, Waterloo  
Station, London, S.E.

**CHAS. J. OWENS,**  
General Manager.

KINDLY NOTE!!!

**L**ADIES, we are High-Class  
LAUNDERERS of  
LINEN of every description.



FRONT VIEW.

Telephone 56.

**V**ISITORS are specially invited  
to inspect this establishment,  
which is within 10 minutes' walk  
of Woking Station.

Price Lists and full particulars on  
application to the Manageress.

**MAYBURY LAUNDRY, Woking.**

# **THE WOKING PHARMACY AND LABORATORY.**

ESTABLISHED 1871.

Telegrams : "Littleboy, Woking."

Telephone No. 27.

# **J.W.H. LITTLEBOY**

(Member of the Pharmaceutical Society),

**ANALYTICAL, MANUFACTURING:  
and DISPENSING CHEMIST, . . .**

**3, High Street, WOKING,**  
(OPPOSITE THE STATION.)

Prescriptions and Family Recipes accurately Dispensed  
with the Purest Chemicals and Drugs

**LITTLEBOY'S CREME DE LILLE,**

In Bottles, 6d. and 1s.

Constant, and Intermittent Current Batteries, Invalids'  
Electric Bells, and other Requisites for the Sick Room  
on Sale or Hire.

**ANTITOXIC SERUMS ALWAYS IN STOCK.  
OXYGEN IN CYLINDERS. . . .**

An Accurate Weighing Machine for testing the Weight of  
Children and Invalids.

*A large and varied Stock of the latest and purest Chemicals, Pharmaceutical  
and Galencial Preparations, Drugs, Surgical Appliances, Toilet Requisites,  
Perfumery, &c., at moderate charges.*

**. . . STORE PRICES FOR CASH. . . .**



## The Woking Tobacconist...

### HAVANA CIGARS.

John Cotton,  
Hankey's, Craven,  
Waverley, Badminton,

AND OTHER

High-class Mixtures.

### MARCELLA CIGARS.

Imperial  
Pipes.

AGENT  
FOR

**LOEWE'S  
BRIARS.**

Best Brands of  
Egyptian, Turkish and  
Virginian Cigarettes.

CHERTSEY ROAD  
AND GUILDFORD ROAD,  
WOKING.

ALBERT POCKOCK

Sole Agents for BECHSTEIN,  
BRINSMEAD, CHAPPELL,  
COLLARD, KNAUSS,  
OBERMEIER <sup>AND OTHER</sup> PIANOS,  
also for the

"CECILIAN"

and "REX"

Piano-Players

*Inspection  
Invited.*

PIANOS

**MAXWELL & SONS,**

***6, Broadway, Woking;***

**AND AT WIMBLEDON.**

PIANOS

FOR SALE, HIRE,  
OR ON THE  
THREE YEARS' SYSTEM.

**TUNING & REPAIRS.**

FIRST-CLASS WORK ONLY.

**MUSIC LIBRARY.**

**GRAMOPHONES AND RECORDS.**

MUSIC

**WHERE TO SHOP AT WOKING.**

**ESTABLISHED 1887.**



**14, Bank Buildings, Woking.**

Goods Suitable for - - -

*Birthday and Wedding Presents,  
Presentations and Prizes - - -  
- - - in Great Variety.*

*REPAIRS in all branches promptly executed on the premises in the best style, by a staff of skilled workmen under my own supervision at Moderate Charges.*



**WHERE TO SHOP AT WOKING.**

TELEPHONE  
No. 3.

Home killed  
English and Scotch Meat.

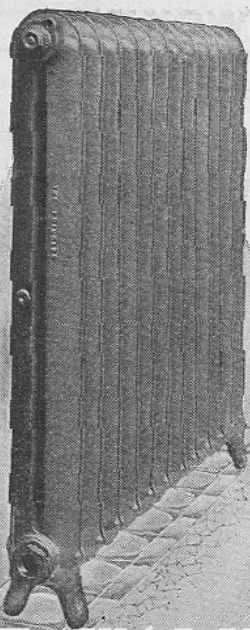
ESTABLISHED  
1849.

**H. HART,** BUTCHER AND  
GRAZIER,



**WOKING AND HORSELL, SURREY.**

*Families supplied on the most Reasonable Terms.*



# R. Pain & Son,

THE WOKING METAL WORKS,

## Sanitary Engineers,



Drains Examined and Tested  
by Modern Methods  
and reported on

**Hot-Water Work for Domestic  
or Warming Purposes.**

*Electric Light, Bells,  
Telephones, &c.,  
installed or kept in  
repair.*

DIFFERENT WORKMEN  
KEPT FOR EACH  
BRANCH.

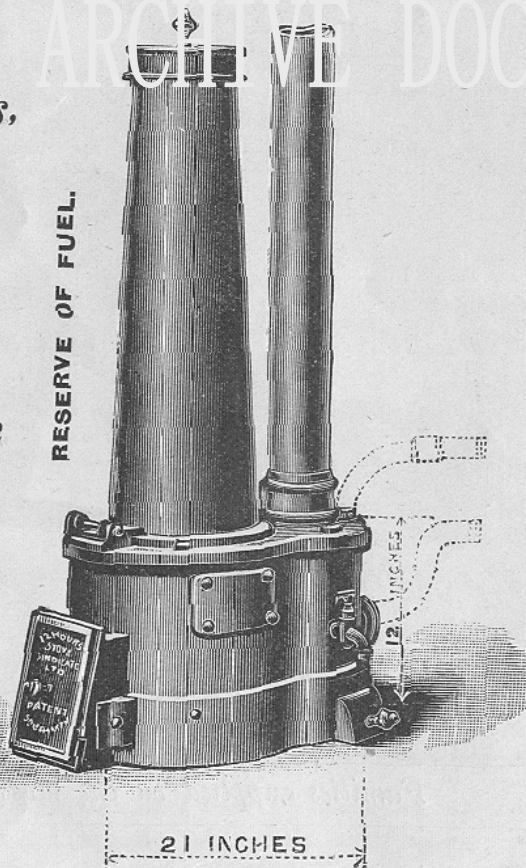


*Satisfaction  
Guaranteed*

*Estimates Free.*

**All Work  
under direct  
Personal  
Supervision.**

RESERVE OF FUEL.



21 INCHES

12 INCHES

WHERE TO SHOP AT WOKING.

# COAL AND COKE MERCHANTS,

CONTRACTORS for  
CARTAGE, &c.

LOCAL ADDRESS—

Albion Buildings,  
WOKING . . .

TELEPHONE—

No. 64,  
WOKING.



ESTABLISHED  
OVER  
HALF A CENTURY.

Offices and Stores in  
Telephonic Communication  
at—

Guildford, Shalford,  
Godalming, Woking,  
Aldershot, Farnboro,  
Camberley, Blackwater,  
Wellington College, Wok-  
ingham, Ascot, Bracknell,  
Sunninghill, Sunningdale,  
Virginia Water, Egham.

**DRAKE & MOUNT (1902) LTD.**

*Special Quotations for Truck Loads at any  
Station, or delivered if desired.*

**GRAVEL, SAND, and MANURE SUPPLIED.**



# M. H. WESTGATE,

2, The Broadway,

WOKING,

For

Locks,

Stoves,

Blind Fittings

JOINERS' TOOLS,

Mixed Paint,

Brushes,

Mats,

&c.

For

Lamps,

Fenders,

Coal Vases,

GARDEN TOOLS,

Wire Netting,

Tinware,

Trunks,

&c.

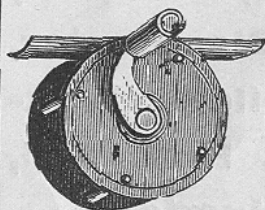
Good Value.

Prompt Free Delivery.

## IRONMONGER.

For  
**FISHING  
TACKLE**

of every description,  
go to . . .



## BUSHNELL'S

STORES,

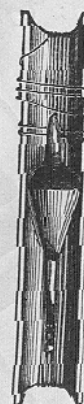
Chobham Rd., }  
& Church St., } **WOKING.**

Also for Guns, Ammunition, Model Engines, Clockwork and Mechanical Toys, Fretwood, Games, Fancy Goods, &c.

**NOTED FOR ALL THE LATEST NOVELTIES.**

FISHING TACKLE a speciality.

Best House in Woking for Tobaccos, Cigars and  
... Cigarettes. . . .



Woking and District.**Messrs. Dowsett & Mann,**

Have a large selection of Choice Properties either to let or for sale, and most of the available furnished houses in the neighbourhood. Also a number of unique Building Sites in the best positions and near the Woking and the New Zealand Golf Links.

Sole Agents to the following choice Building Estates—

**The Heathside Park Estate, Woking.**

**The Hill View Estate, Woking.**

**The Waldens, Park Estate, Horsell.**

**The Station Estate, Byfleet.**

Full Particulars on Application.

LAND AND ESTATE OFFICES,

**ONSLOW BUILDINGS, . . . .  
GUILDFORD ROAD, WOKING.**

**"KNOWLEDGE IS POWER."**

And READING is one of its best CHANNELS.  
You will do well then to be connected with

**Elton's Select Library.**

The place for the Best and the Latest Books, and the

***Largest Library in the District.***

Subscription terms for short or long periods.  
Catalogue and full terms post-free on application.

***Remember*** When you want a Choice Album of Local Views, the best is **PICTURESQUE WOKING**, published at 1/-, Post-free, 1/3.

***Choice Pictures.*** FANCY & LEATHER GOODS, NOTEPAPER, and DIE STAMPING, PRINTING and BOOKBINDING.

*A Visit will repay you.*

**W. Arthur Elton,**  
**22, CHERTSEY ROAD, WOKING.**

## **China and Glass.**

**WALTER MEEKS,** BROADWAY,  
MAYBURY ROAD,  
WOKING.



Sole Agent for MINTONS, WEDGWOOD,  
ROYAL WORCESTER, and all Best  
Firms in China and Glass.

**French Fire-proof in all its Branches.**

# **Mivart & Co.**

**AUCTIONEERS,**

**Surveyors, Land and Estate Agents,**

**SOUTH WESTERN BANK CHAMBERS, WOKING,  
and 59, CONNAUGHT STREET, LONDON, W.**

A PRINTED LIST OF ELIGIBLE HOUSES, both Furnished and  
Unfurnished, will be forwarded on application post-free to any address.

**Inventories made and checked.**

**Valuations for Probate, &c.**

Owners are invited to forward particulars of Properties they wish to  
dispose of, which we shall be pleased to place on our Registers and  
in our Printed List free of charge.



# ARCHIBALD'S

The most prominent and most popular resort in  
*For high-class goods in* **WOKING.**

General Drapery, Dress Goods,  
Silks, Millinery, Underclothing,  
Irish Linens, Gloves, Hosiery,  
*etc., etc.*

Telephone 0188.

**WATERLOO HOUSE,  
BANK BUILDINGS, WOKING.**

"Our Work Lives long after price is forgotten."

**DAVIS**  
**& COMPANY**

**GENERAL : : :  
LETTERPRESS  
PRINTERS &  
STATIONERS**



**12, Chertsey Road,  
Woking : Surrey.**



**Balance Sheets, Magazines, Pamphlets, Price Lists, Reports,  
and all Commercial Requirements,**

**ESTIMATES GIVEN.**

# WOKING DAIRY SUPPLY ASSOCIATION,

17, High Street, WOKING.

Contractors to H.M. Government. Purveyors of  
High-class Produce only.

Under careful Medical Supervision. Milk Sampled Daily  
by Medical Officer.

Every care taken, and every attention given to Customers.

MILK 4d. QUART.

EGGS, BUTTER AND CREAM AT CURRENT PRICES.

MANAGER, ALFRED CRABBE.

## Special Notice.

To . . .

Town Clerks,    ❧    ❧    ❧

Clerks of Local Authorities,

Secretaries of Advertising and

Town Improvement Committees.

If you are interested in a District to which you wish to draw Public Attention, and think that it would be helped by the issue of a well-illustrated "Homeland Handbook," write to the **General Manager**, The Homeland Association for the Encouragement of Touring in Great Britain, Association House, 22, Bride Lane, Fleet St., London, E.C.

ESTABLISHED OVER A CENTURY.

*James Whitburn,*

Builder, Contractor  
and Undertaker,  
WOKING VILLAGE, Surrey.



*Agent for the London Assurance Company.*

ESTIMATES GIVEN.

THE HOMELAND ASSOCIATION have in preparation a New Series of EDUCATIONAL READERS FOR CHILDREN, describing the Counties of Great Britain. The first volume, entitled "Stories of Surrey," dealing with the historical and general incidents in the County, intended for Children from eight to ten years of age, IS NOW READY.

The Second Volume, also dealing with Surrey, for older Children, will be ready in JULY, 1905.

## Homeland Readers

Book I. "STORIES OF SURREY."

FULLY ILLUSTRATED. BOUND IN CLOTH, 1/- NET.

Book II. "THE COUNTY OF SURREY."

FULLY ILLUSTRATED. BOUND IN CLOTH, 1/3 NET.

Published for The Homeland Association by Rudd & Co., 12, Ludgate Square, E.C.  
OF ALL BOOKSELLERS.



# Refreshments.

The

(Two Minutes' from South Western Railway).

"MIKADO,"

12, BROADWAY,

**WOKING  
STATION**

*Good Accommodation.  
Moderate Charges.*

(Facing  
Up Platform).

**LEWIS DEXTER, Proprietor.**

Telephone, "0110, Woking."

**F. WARREN & CO., LTD.,**

**Coal & Coke Merchants, Colliery  
Agents, & Cartage Contractors,**

District Manager:

Mr. C. W. Barrett.

LOCAL OFFICE:

**Guildford Road,**

**Gloster's, Corn Exchange, and Send.**

High Standard Qualities,  
Thoroughly Screened,  
Prompt Delivery.

Special quotation for  
Truck Loads  
at any Station.

DEPOTS THROUGHOUT LONDON AND SUBURBS.

# OPPOSITE THE POST

OFFICE IN WOKING is the establishment of **Gloster's Ltd.**, Corn Merchants, known as the Corn Exchange. Here can be obtained the finest quality at low prices, in all kinds of food for Horses, Cattle, Pigs, Poultry, Dogs, etc.



"Thrive" the wonderful food for young chicks is prepared only by Gloster's Ltd., and sold in bags at 6<sup>d.</sup>, 10<sup>d.</sup> and 1/1; while Gloster's Improved Self-Raising Flour is attaining a great reputation for Purity, Strength and Colour. 1<sup>1</sup>/<sub>2</sub>lb. Bag. 3d., 3lbs., 5<sup>1</sup>/<sub>2</sub>d.

This firm also makes a point of giving immediate attention to all enquiries and prompt delivery of all goods ordered.

## GLOSTER'S, LTD.,

*Corn Exchange, WOKING.*

Telegraphic Address: "Forage, Woking"

Telephone No. 0175.

TELEPHONE No. 0193.

Noted House for Tools and Cutlery.

## C. E. WATKINS,

*Furnishing and  
General Ironmonger.*

*Oxford House,  
WOKING.*

*Ammunition and Sports Dépôt.*

**Sole Agent for Glacier Window Decorations.**

*Agent for the Norwich Union Fire Insurance Society.*

## THE HOMELAND HANDBOOKS.

		Cloth.	Paper.
1	Tonbridge for the Angler, the Holiday-Maker and the Resident ..	1/-	6d.
2	Tunbridge Wells of To-day. By STANLEY MARTIN and PRESCOTT ROW. New Edition in the Press ..	1/-	6d.
3	"London Town." By ERIC HAMMOND. With Map ..	1/-	6d.
4	"Lyonnesse." The Isles of Scilly. Ordnance Map ..	1/-	6d.
5	"Wolfe Land": The Westerham District, Kent. Ordnance Map ..	2/-	1/-
6	"Kent's Capital": Maidstone. With Map ..	1/-	6d.
7	Croydon, New and Old. With Map ..	1/6	6d.
8	Dartmoor and its Surroundings. With Maps ..	2/-	1/-
9	Rochester and Chatham with Pen and Camera. By A. G. MUNRO, B.A. Second Edition. With Map ..	1/6	6d.
10	Reigate and Redhill. By T. FRANCIS W. HAMILTON and W. HODGSON. Second Edition. Ordnance Map ..	1/-	6d.
11	"Surrey's Capital": Guildford and District. By J. E. MORRIS, B.A. Third Edition. With Map ..	1/6	6d.
12	Dulverton and District; The Country of the Wild Red Deer. By F. J. SNELL, B.A. Second Edition. Cloth Edition contains Map ..	1/6	6d.
13	Farnham and its Surroundings. By GORDON HOME. With Introduction by the late EDNA LYALL. Ordnance Map ..	2/-	1/-
14	Godalming and its Surroundings. By T. F. W. HAMILTON. With Map ..	1/6	6d.
15	Teignmouth and its Surroundings. By BEATRIX F. CRESSWELL. Ordnance Map ..	1/6	6d.
16	Hastings and St. Leonards. By W. H. SANDERS. With Plan ..	1/6	6d.
17	Epsom and its Surroundings. By GORDON HOME. With a Prefatory Note by "A.R." Ordnance Map ..	1/6	9d.
18	Minehead, Porlock, and Dunster: The Seaboard of Exmoor. By C. E. LARTER. Second Edition. Ordnance Map ..	1/-	6d.
19	Cranbrook: The Town of the Kentish Weald. With Map ..	1/6	6d.
20	Dawlish, and the Estuary of the Exe. By BEATRIX F. CRESSWELL. Cloth Edition contains Map ..	1/-	6d.
21	St. Albans: Its Abbey and its Surroundings. By C. H. ASFDOWN, F.R.S.S., F.C.S. Ordnance Map ..	2/6	1/-
22	Arming, Beckenham, and Chislehurst. By GEORGE CLITCH. Introduction by PHILIP NORMAN, F.S.A. Ordnance Map ..	2/6	1/-
23	Leicester and the Cathedral. By BEATRIX F. CRESSWELL. With Plan ..	1/-	6d.
24	Kingston-upon-Thames and Surbiton. By DR. W. E. ST. L. FINNY. Ordnance Map ..	2/6	1/-
25	Evesham and its Neighbourhood, including Broadway. By WILLIAM SMITH. With Map ..	1/6	1/-
26	Petworth and Mid-West Sussex. By L. C. BARNES. With Map ..	1/-	—
27	Newquay, The Vale of Lanherne and Perranzabuloe. By FANNY GODDARD. Ordnance Map ..	1/-	6d.
28	Haslemere and Hindhead. By JOSEPH E. MORRIS, B.A. With Map ..	2/6	1/-
29	Taunton and Taunton Deane. By BEATRIX F. CRESSWELL. Map ..	2/6	1/-
30	Littlehampton, Arundel and Amberley. By W. GOODLIFFE, M.A. Ord- nance Map ..	1/-	6d.
31	Tavistock: "The Western Gate of Dartmoor." By WILLIAM CROSSING. Introduction by REV. S. BARING-GOULD. Ordnance Map ..	1/-	6d.
32	Plymouth: "The Metropolis of the West." By W. H. K. WRIGHT. Ordnance Map ..	1/-	6d.
33	The Chalfont Country, Bucks. By S. GRAVESON. Ordnance Map ..	1/6	1/-
34	Dunstable: The Downs and the District. By WORTHINGTON G. SMITH, F.L.S., F.A.I., F.R.S.A., Ireland. Maps ..	2/-	1/-
35	The Quantock Hills: Their Combes and Villages. By BEATRIX F. CRESS- WELL. Ordnance Map ..	2/6	—
36	Oxford, Limpsfield and Edenbridge with their Surroundings. By GORDON HOME. Ordnance Map ..	1/-	6d.
37	Lynton, Lynmouth and the Lorna Doone Country. By JOSEPH E. MORRIS, B.A. Ordnance Map ..	1/-	6d.
38	Horsham with its Surroundings. By W. GOODLIFFE, M.A. With a Chapter on Christ's Hospital ..	2/-	1/-
39	Seaford and Newhaven with their Surroundings. By GEORGE DAY. Ordnance Map ..	1/-	6d.
40	Huntingdon, St. Neot's and St. Ives. By H. L. JACKSON, M.A. and G. R. HOLT SHAFTO. Ordnance Map ..	2/-	1/-
41	King's Lynn and with its Surroundings. By W. A. DUTT. Ordnance Map ..	2/-	1/-
42	Woking and Ripley. A. H. ANDERSON ..	2/-	1/-
43	Hertford and its Surroundings. By W. GRAVESON. Map ..	2/-	1/-

# J. & F. Gridley,

## *Timber & Deal Importers*



Arthur's Bridge  
Sawing, Planing and  
Moulding Mills,

*Head Office:*  
*Kingston-on-Thames.*

**WOKING.**

*Established 1865.*

# F. W. Benham,

**Corn, Forage and Seed Stores,**



FORAGE CONTRACTOR TO  
F.M. H.R.H. THE DUKE OF  
CONNAUGHT, K.G.



**Town Mills,  
CHOBHAM.**

**ESTABLISHED 1808.**



# Clintons

LIMITED

ARE THE OLDEST  
ESTABLISHED . .

*Auctioneers & Estate*  
*Agents* IN WOKING.

AGENTS FOR THE ROYAL INSURANCE CO.  
- - - AND - - -  
STANDARD LIFE ASSURANCE CO.

Telegraphic Address: "Clintons, Woking."

Telephone No. 8.



OFFICES :

CHOBHAM ROAD, WOKING.

WHERE TO SHOP AT WOKING.

# Clintons

LIMITED

THE OLDEST  
ESTABLISHED

## *House Furnishers*

IN THE NEIGHBOURHOOD.



Keep a large staff of Competent Cabinet Makers,  
Upholsterers, Polishers and Fitters, and their Work-  
shops are the best appointed in the District.

Floor Coverings, Cornice Poles, Blinds  
and Fitments a Speciality.



PANTECHNICON STORES.

REMOVALS, PERIODICAL AUCTIONS.  
ESTIMATES FREE.

WHERE TO SHOP AT WOKING.

**G. T. TYLER & Co.,**

Wine and  
Spirit Merchants,

*2, Bank Buildings,*  
**WOKING.**

Sole Proprietors of the Celebrated Blend of Scotch Whiskey  
as supplied to the Mansion House and  
Corporation of the City of London.

Sole Agents for Old Reading Abbey Whiskey (Scotch and Irish), and  
Stenhouse Scotch Whiskies, as supplied to the House of  
Lords, and the House of Commons.

**Stores: Friary, Holroyd, Healeys Breweries, Ltd.**

**AGENTS FOR :**

*Bass & Co., Allsopp & Sons,  
Jaccob's Lager Beer and Pauli Lager Beer.*

PRICE LISTS ON APPLICATION.

**G. T. TYLER & CO.,** 2, BANK BUILDINGS,  
WOKING.

**Ordnance Survey Map of the County round Woking**  
(SCALE OF ONE INCH TO ONE STATUTE MILE).

# HOCKERING BUILDING . . . ESTATE WOKING.

*Containing over 50 Acres of the Choicest Sites  
in Woking, only 10 minutes' walk from the  
station, midst Beautiful Surroundings, stand-  
ing high and dry on sandy subsoil. Well-  
made roads, kerbed, sewered, and with gas,  
electric light, and company's water . . . . .*

**To be Sold in Plots of  $\frac{1}{4}$  Acre and  
upwards to suit purchasers.**

*Arrangements can be made for Sale by Easy Instalments extending over  
a term of years.*



For Particulars of the above, and of all available

**Residences, Building Land,  
Estates, Shops, &c.,**

**To be Let or Sold in this District,**

apply to

**Messrs. SMALLPEICE, ALLEN & Co.,**

**RAILWAY APPROACH,**

**WOKING;**

*and 4, Queen Victoria Street,  
Bank, E.C.*

*Telephone No. 0167 Woking.  
647 Bank.*



All Seeds and Bulbs sent carriage and packing free on receipt of remittance.

# BARR'S SUPERIOR SEEDS FOR FLOWER & KITCHEN GARDEN

## BARR'S SEED GUIDE.

Contains a select List of the best Seeds for securing a supply of Vegetables "The Year Round," and a full Descriptive List of the most beautiful Annuals and Perennials for keeping the flower Garden and Greenhouse always gay. It is full of Practical Hints on the culture of Vegetables and Flowers, valuable to Gardeners, Amateurs, and Exhibitors. *Sent free on application.*

**Barr's collections of SUPERIOR VEGETABLE SEEDS,**  
5/6, 7/6, 12/6, 21/-, 42/-, 63/- to 105/-. *Full particulars on application.*

**Barr's collections of CHOICE FLOWER SEEDS**  
FOR ALL PURPOSES.

2/6, 5/6, 7/6, 10/6, 15/-, 21/-, 30/-, 42/- and 63/-. *Full particulars on application.*

# BARR'S BEAUTIFUL HARDY DAFFODILS GOLD MEDAL THE MOST LOVELY OF ALL SPRING FLOWERS

BARR'S DAFFODILS were awarded the only GOLD MEDAL at the Royal Horticultural Society's First Great Daffodil Conference, 1884; PREMIER PRIZE, 1894; GOLD MEDAL, 1896; GOLD MEDAL, 1899; TWO GOLD MEDALS, FIRST PRIZE, and £10 10s. CHALLENGE CUP, 1901; TWO GOLD MEDALS, 1902; GOLD MEDAL, 1903; GOLD MEDAL, 1904; and GOLD MEDAL, 1905; also many Silver and Silver-gilt Medals, Certificates of Merit, &c., at the London and Country Flower Shows.

Barr's 21/- Amateur's Collection of Daffodils contains 6 Bulbs each of 26 high-class Daffodils, all beautiful.

Barr's 21/- "Woodland" Collection of Daffodils contains 500 Bulbs in 20 fine showy sorts suitable for naturalizing in grass or shrubbery borders.

## BARR'S COLLECTIONS OF BULBS FOR INDOORS AND OUTDOORS.

Barr's 21/- "Greenhouse" Collection contains 300 Spring-flowering Bulbs of finest quality.

Barr's 21/- "Flower Garden" Collection contains 600 Spring and Summer-flowering Bulbs, all decorative.

Barr's 21/- "Woodland" Collection contains 900 Bulbs suitable to naturalize in Woodlands, Orchards, Wild Gardens, &c.

For full particulars, see Barr's Bulb Catalogues, free on application.

**BARR & SONS,** 11, 12, & 13, King Street, Covent Garden, LONDON.

VISITORS invited to BARR'S NURSERIES, which are reached from London by the South Western rail to Surbiton Station, and from thence a short walk past the New Recreation Ground. Cabs always at Surbiton Station. Daffodils in flower, April; Tulips in flower, May; other hardy flowers "all the year round."

**DO YOU WANT A DOG KENNEL?**

IF SO, CALL AT

**Tom W. Smith & Co.'s**

(Partners : W. J. Drowley & E. B. Allen).

**Moulding, Turnery**

AND

**Joinery Works,**

**Church Street,  
WOKING. . . .**



DRY DEALS, BATTENS AND BOARDS,  
MAHOGANY, OAK AND HARD WOODS.



Doors and Mouldings of  
all Descriptions.

**DO YOU WANT A CHICKEN HOUSE?**

**DO YOU WANT A GREENHOUSE OR CONSERVATORY?**

**DO YOU WANT A SUMMER HOUSE?**

# R. TAYLOR & CO.,

15, High Street,

(Near Public Hall), *Woking.*

PIANOFORTE and  
ORGAN FACTORS

*Importers of Musical Instruments, Strings, etc.  
Music Sellers (Stores Prices for Cash with Order), Tuners  
and Repairers of Pianos, Organs, etc.*

**Tuners sent to all parts.**

We hold Recommendations from  
COLLARD and other leading firms.

**PIANOS** Our **Scholastic Model** at **20 Guineas Cash** cannot be  
equalled at the price for quality, touch and tone. Supplied to  
numerous Schools, Institutions and School Boards.

**Students' Model, 16 Guineas Cash.**

**Popular Model, 12 Guineas Cash.**



*Carriage Paid to any Railway  
Station in England.*

15 YEARS' WARRANTY.

## Pianofortes and American Organs

By the Best Makers—from 10 to 300 Guineas.

*Phonographs, Gramophones, and Talking Machines;  
Records and Accessories of all kinds.*

REPAIRS.

Quotations forwarded upon application.  
Lowest Terms obtainable.

**WHERE TO SHOP AT WOKING.**

**THE OLDEST GROCERY HOUSE IN THE TOWN.**

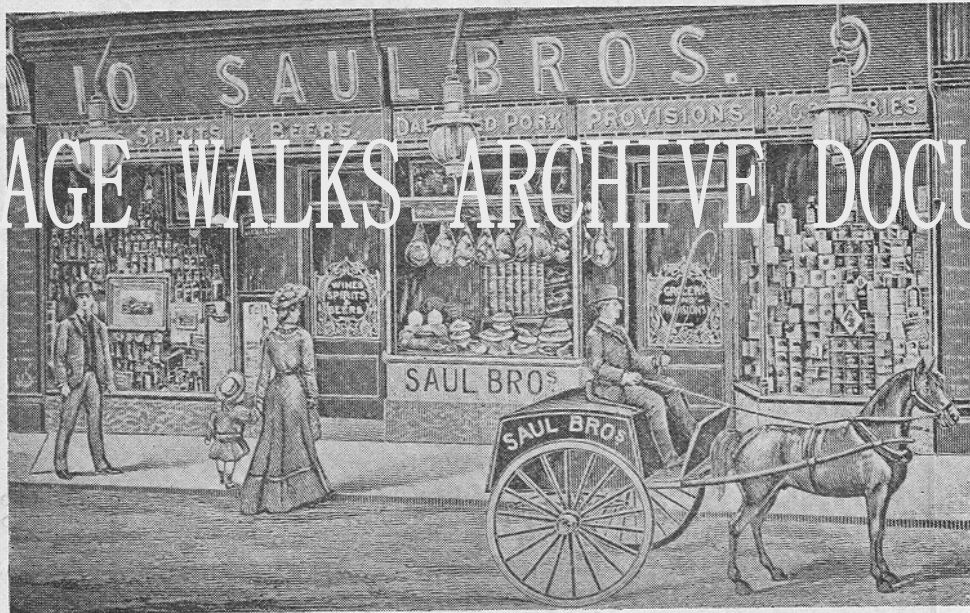
**Closes at 1 p.m. on Wednesdays.**

*SPECIALITIES :*

***Oake Wood's Royal Gillingham  
WILTSHIRE BACON.***

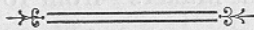


**Choice Dairy-Fed Pork, killed on the premises.  
Home-Made Pork Sausages.**



**Agents for**

**W. & A. GILBEY'S WINES and SPIRITS.**

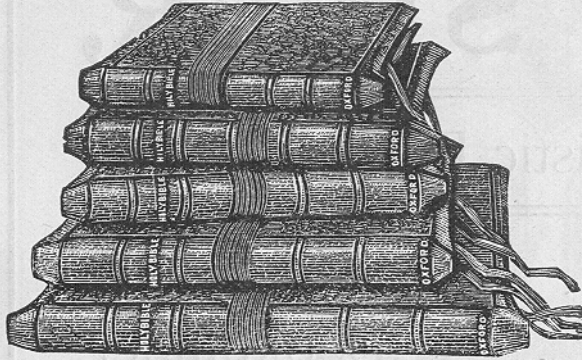


**9 and 10, High Street,  
WOKING.**



# The Oxford Bible for Teachers.

REVISED OR AUTHORIZED VERSION.



In upwards of 20  
sizes and 100 styles  
with or without the  
apocrypha.

Prices from 1/- to £5.



Prayer Books, Hymnals, and Devotional  
Books of every description.

—\*— LARGEST STOCK IN THE DISTRICT.

**S. E. STEER, Bookseller & Printer,**  
**Chobham Road, Woking, SURREY.**

## Arthur W. Bernthal

**GENERAL AND FANCY . .**

**DRAPER AND MILLINER,**

‘THE’ CENTRAL DRAPERY STORES,

**8, COMMERCIAL ROAD,**

**WOKING.**



**WHERE TO SHOP AT WOKING.****S. E. STEER,**

Artistic Printer

Telephone  
No 0170  
Woking.Discount  
Bookseller,Stationer,  
Bookbinder,*Relief Stamper, Fancy Goods Warehouseman,*

CHOBHAM ROAD,

*Publishing Office of  
the Woking and  
District Time Table.***WOKING.****General & Mercantile Stationery...**

Ledgers, Day Books, Cash Books, Journals, Order Books, Pocket Ledgers, Copy Books, Pocket and Memorandum Books of all kinds. Office Requisites of every description.

**Printing Orders Promptly Executed...**

Posters, Circulars, Club Fixture Cards, "In Memoriam" Cards, Memorandum and Invoice Headings, Ball Programmes, Wedding Cards, Menu Cards, etc.

*Relief Stamping executed promptly at low prices.*

**Fancy Goods Warehouse...**

All the Latest Novelties in Leather Goods, Purses, Wrist Bags, Writing Cases, Albums, etc.

**All Work Executed on the Premises at Moderate Prices.**

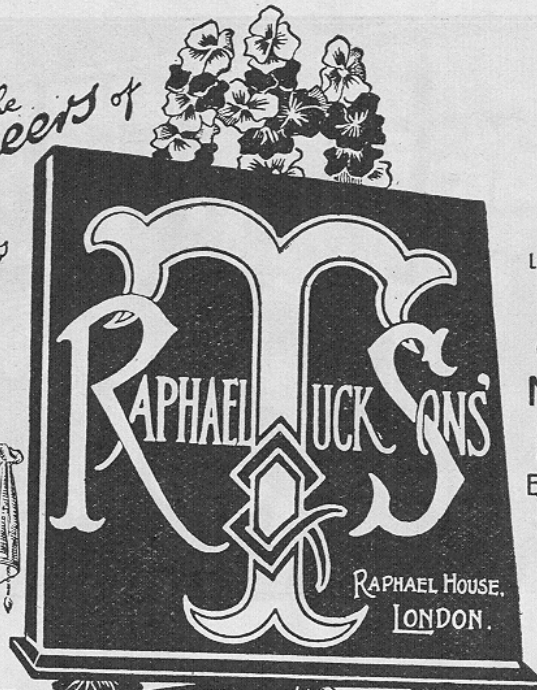
**25% Discount off all Books except those published at Nett Prices.**

ORDERS BY POST PROMPTLY ATTENDED TO.

*The  
Pioneers of  
Picture  
Postcards*



UPWARDS OF  
30,000 DESIGNS



LATEST AWARDS.

**TWO  
GOLD  
MEDALS**

POSTCARD  
EXHIBITION  
1905.



**"Unapproachable"**

IS THE VERDICT OF THE ENTIRE PRESS.

OF ALL LEADING DEALERS.

OUR TRADE MARK, "The Easel and Palette," APPEARS ON  
EVERY GENUINE TUCK POSTCARD.



ONE OF OUR SALE ROOMS.

# Robertson Brothers,

CHERTSEY ROAD, WOKING, SURREY.

AUCTIONEERS, VALUERS,  
HOUSE FURNISHERS AND  
REMOVAL CONTRACTORS.



The Oldest and Most Experi-  
enced Firm in Woking for  
Removals and Warehousing.

Monthly Auction Sales of Antique and Modern Furniture, etc.

Agency of the London Assurance Corporation Life and Fire, etc.

Furniture Purchased in any quantity for Cash.

TELEGRAMS: "ROBERTSON'S, WOKING."



Established 1880.

# A. J. RENSHAW,



Kingsway Farm Dairy,  
GOLDSWORTH ROAD,  
WOKING. . . .

---

Genuine New Milk delivered direct from Cows to Customers.  
Milk supplied in patent bottles if desired, no extra charge.

---

*A. J. R. has delivered New Milk for the last  
15 years, and can be thoroughly recommended.*

---

**FRESH BUTTER.**

**NEW LAID EGGS.**

All Dairy Produce guaranteed of the best quality.

---

Notes Near the Footbridge

# R. TOMPSETT,

Dealer in First-Class Ladies' & Gentlemen's  
. . . Left-off Wearing Apparel, . . .

1, THE PAVEMENT, GOLDSWORTH ROAD,  
**WOKING.**

---

**CAST-OFF CLOTHING BOUGHT FOR CASH.**

Cheque or P.O. by return for Parcels sent.

*Ladies and Gentlemen waited on by Mr. or Miss Tompsett.*

**WHERE TO SHOP AT WOKING.**

**High-Class Store Chemist.**

**Edward H. Taylor.**

Member of the Pharmaceutical Society of Great Britain.

Medallist of the Westminster College of Chemistry and Pharmacy.

Formerly with Messrs. SQUIRE, Chemists on  
the Establishment of His Majesty the King.

*Prescriptions accurately dispensed with Drugs  
and Chemicals of guaranteed Purity. . . .*

FOREIGN PRESCRIPTIONS.—French, German, Italian, etc., dispensed in  
strict accordance with the Pharmacopœias of the respective countries.



The Largest  
Stock in the  
District of



Photographic Materials  
and Appliances. . . .

*Developing and Printing for Amateurs.*

**STORE PRICES FOR CASH.**

COMMERCIAL ROAD AND  
CHOBHAM ROAD, **WOKING.**

TELEPHONE No: 0164.

# PHRASE-BOOKS

FOR  
TOURISTS AND TRAVELLERS.

## MARLBOROUGH'S

### "SELF-TAUGHT" SERIES

OF

## European & Oriental Languages

Contain Travel Talk for Railway and Steamboat, Customs, Hotel, Post Office Phrases and Conversations, Vocabularies, Elementary Grammar, Commercial and Trading Terms, Tables of Money, Weights and Measures, with the English Phonetic Pronunciation arranged for learning AT A GLANCE.

*†† FRENCH	} Self-Taught.	*† ITALIAN	} Self-Taught.
*† GERMAN		*† SPANISH	
Wrapper, 1s. od. each; Cloth, 1s. 6d. each.			
*† DANISH	} Self-Taught.	*†† PORTUGUESE	} Self-Taught.
*† NORWEGIAN		*†† DUTCH	
*† SWEDISH		*†† RUSSIAN	
Wrapper, 2s. od. each; Cloth, 2s. 6d. each.			

\* With Cycling Terms. † With Photographic Terms. ‡ Modeling Terms.

*Catalogue of European and Oriental Languages given. Mention this publication.*

## A BOOK FOR THE TIMES.

# SMALL CULTURE.

EDITED BY W. J. MALDEN.

The purpose of these volumes is to afford practical assistance to the small holder, the cottage-gardener, and the amateur, in rural and suburban districts, in order that their efforts at small culture may be both interesting and profitable.

**VOLUME I. Crown 8vo. Cloth, 1/6; Wrapper, 1/-**  
 CONTENTS: SINGLE COW-KEEPING. PIGS. POULTRY. CRAMMING.  
 DUCKS, GEESE and TURKEYS.

**VOLUME II. Crown 8vo. Cloth, 1/6; Wrapper, 1/-**  
 CONTENTS: ORCHARDS, VEGETABLES, ALLOTMENTS,  
 GLASS CULTURE, BEE-KEEPING.

Sold by all English and Foreign Booksellers and Tourist Agents.

Woking: S. E. STEER, Chobham Road.

London: E. MARLBOROUGH & CO., Publishers, 51, Old Bailey, E.C.

*The* #  
**Garlands Studio**  
*for*  
**Photographs.**

**MAYBURY ROAD,  
 WOKING.**

**PLEASE CALL  
THAT'S ALL.**

**E. CARTER,**  
*Queen's Road,*  
**KNAPHILL.**

***Builder, Decorator  
 and House Agent.***

Offices—Upper Guildford Road

**Rents Collected and Property Managed.**

*Drainage Works, General Repairs, etc. Latest Designs in Wall Papers.*

**Note—PLANS OF HOUSE PROPERTY PREPARED to SUIT CUSTOMERS.**

Freehold Land and House Property for Sale.

**G. TYRRELL,**

**THE OLDEST OIL AND  
 COLOUR STORES IN WOKING.**

**BROOMS AND BRUSHES, TIN AND IRONWARE,  
 GLASS, WALLPAPERS, TARS, etc., etc.**



# WILLIAM RUGLYS,

Broad Street, KNAPP HILL.

*The Up-to-date Stationer, Bookseller, Newsagent  
and Seedsman.*

... A LARGE STOCK OF ...

*Local View Postcards, Birthday Cards,  
Fancy Goods, Art Needlework, etc.*

Circulating Library. Bookbinding and Printing.

ESTABLISHED OVER 20 YEARS.

## W. J. COLLINSON,



Fancy Bread and Biscuit Baker,  
Pastry Cook and Confectioner.

WOKING STEAM BAKERY,

Chertsey Road, WOKING.



Wedding, Christening, and School  
Cakes made to order.

# Woking District Gas Co., — Ltd. —

## IMPROVEMENTS IN LIGHTING BY INCANDESCENT GAS. LESS THAN ONE-THIRD THE COST OF ELECTRIC LIGHT.

Reliable, Cheap, Effective and Safe.  
A Steady Brilliant Light that is not  
Injurious to the Sight . . . . .

### COOKING AND HEATING STOVES HIRED OUT AT SMALL RENTALS.

The Gas Company lays Service to Meters  
and Pipes to Stoves, free of charge, up to  
a reasonable limit.

The Gas Company attends to Consumer's  
Apparatus, if not working satisfactorily,  
free of charge.

Maintenance of Incandescent Burners  
undertaken by the Gas Company, at low  
rates.

Prices and Particulars of Various Lamps, Stoves, and Apparatus  
may be obtained on application to the Manager,

**GAS WORKS, BOUNDARY ROAD.**

TELEPHONE No. 0160, Woking.



### HAIR TREATMENT.

By MR. CLAUDE DE NEUVILLE.

Consultations on Mondays only.

Advice by Correspondence.

A Life-long Study.

SPECIALITÉ HAIRDRESSING,  
MARCEL WAVING AND  
TRANSFORMATION DRESSING.

By R. C. DE NEUVILLE.

# De Neuville Fils

## Court Hairdressers,

Perruquiers, Posticheurs & Specialists,

19, HIGH STREET, WOKING,



**WHERE TO SHOP AT WOKING.**

Telephone No. 15.

*Home-killed Meat of the Finest Quality.*

**E. G. Marshall,**

**FAMILY BUTCHER**

**CHERTSEY ROAD, WOKING.**



*All Orders receive Strict Personal Attention.*

**Deliveries Daily. Orders by Post or Telephone promptly despatched.**

CORNED BEEF, SWEETBREADS.  
PICKLED TONGUES, ETC.,  
ALWAYS IN STOCK.

*Cold Storage on the latest and most improved system, thus insuring tender meat in the hottest weather.*

**Price List on application. A Trial respectfully Solicited.**



**ALBERT FOORD,**

**COAL MERCHANT,**

**. . . BATH ROAD, WOKING. .**

Price List on Application.

**BOND'S** **TEMPERANCE**  
**AND**  
**COMMERCIAL**

CALEB BOND,  
Proprietor.

**HOTEL**

**Commercial Rd., WOKING.**

**J. D. Dingle & Co.**

13 & 14, The Broadway,  
Maybury Road, Woking.

**Linen & General Drapers,**  
**Hosiers, Glovers, Lacemen.**

Milliners, Children's Costumiers, and Juvenile Outfitters.  
Ladies' Cycling and Fashionable Underwear.

Corsets, Umbrellas,  
Dress Goods.



Blouses, Furs,  
Coats and Costumes.

**LAYETTE & ACCOUCHEMENT OUTFITS.**

TERMS CASH.

# MODERN SCHOOL,

**WOKING.**

**J. TOMLINSON,**  
University of London and College of  
Preceptors  
(Regisd. Col. B.).

**High-Class Education.**

**Moderate Terms. . . .**

**BOND'S**  
**SAUSAGES**  
ARE THE  
**BEST.**

Chobham Road,  
**WOKING.**



*Ox Tripe and Heels*  
*a Speciality.*

***F. Albrecht,*** 

GRO CER, TEA, . . .  
PROVISION AND CORN  
MERCHANT, . . .

STATIONER AND . . .  
FANCY GOODS DEALER,

***3, Commercial Buildings,***  
**BYFLEET.**



It will pay and please you to purchase a RESIDENCE, or to have a CONSERVATORY, GREENHOUSE, STABLE, SUMMER HOUSE, MOTOR HOUSE or KENNEL Erected by **FREDERICK AYLOTT, Builder, etc., Portugal Rd., and Boundary Rd., WOKING.**

REPAIRS, DRAINAGE and DECORATING executed with Promptitude and Skill.

*A Satisfied Customer is the Best Advertisement.*

IF YOU BUY YOUR IRONMONGERY FROM

**W. R. SKEIT,** 2, HIGH STREET,  
WOKING.

YOU WILL BE SATISFIED.

*Repairs to Household Utensils and all Metals.*

Garden Tools a Speciality.

Reliable Lawn Mowers from 16/6 each.

# GROSVENOR DAIRY,

No. 1, Byfleet Corner, West Byfleet, and  
DEER'S FARM, WISLEY, SURREY.

New Milk, Cream, Butter, Eggs and Poultry supplied from  
our own Farm.

*Families waited on Twice Daily. - A Trial Solicited.*

Winner of over 70  
Prizes in Horse  
Shoeing Competitions  
at all the principal  
Agricultural Shows  
in the Kingdom,  
including the Royal,  
Bath and West,  
Royal Counties,  
Yorkshire, Oxford-  
shire, Wilts,  
Hants, etc.

## F. MAY,

**Practical Shoeing Smith,**

**VALE FARM ROAD,  
WOKING . . . . .**

—:O:—

Pneumatic, Bar, Frog, and all kinds of Pads.  
Frost Screws, etc., kept in stock.

REGISTERED  
BY THE  
WORSHIPFUL  
COMPANY OF  
FARRIERS BY  
EXAMINATION.

PERSONAL  
ATTENTION  
GIVEN. A TRIAL  
SOLICITED.

Telephone No.

Established 1884.

# L. DERISLEY,

DEVONSHIRE HOUSE,  
— BYFLEET. —

**Prime Home-Killed  
Meat**

*Pickled Tongues and  
Corned Beef.*

*Dairy-Fed Pork and Sausages  
all the Year round.*

**FAMILIES WAITED ON DAILY.**



# Red House Hotel,

WOKING.

One minute from Station. FAMILY AND COMMERCIAL.  
BILLIARD ROOM. GOOD STABLING. TERMS MODERATE.

. . . H. H. NORTON, Proprietor.

## Gale Bros.,

. . . WOKING VILLAGE.

Speciality; HIGHEST GRADE CYCLES.

Built to Order on the premises.

Satisfied Clients our recommendation.

REPAIRS A SPECIALITY. . . .

MAYBURY ARCH BAKERY, WOKING.

# Albert E. Smith,

FAMILY BAKER AND  
CONFECTIONER, . . . .

Pure White and Whole-Meal Bread.

Home-Made Bread, and Self-Raising Flour (a Speciality).

Every description of Cake in Stock, or made to order.

All kinds of Milk and other Chocolates, by leading makers.

A TRIAL KINDLY SOLICITED.



ORDERS BY POST RECEIVE PROMPT




. . . ATTENTION. . . .

WHERE TO SHOP AT WOKING.

# Hugh Butcher

(From MAPLE & CO.'S, LONDON),



Practical  
Cabinet Maker,  
Upholsterer,  
Complete House  
Furnisher, &c.

## *A Rare Selection of Curios and Antiques*

Furniture made to any Design to suit customers' requirements.

A large and varied assortment of Furniture, Bedsteads, Linoleums,  
etc., etc., in stock.

Upholstering in all branches by competent men.

Houses fitted throughout with Blinds, Cornice Poles, Picture Rods,  
Carpets, Linoleums, etc., etc.

**11, THE BROADWAY, WOKING.**

*Orders promptly attended to. Best Workmanship Guaranteed.*

Some of our Customers say "We have been to every Coal Merchant in Woking,  
but found the right one at last."

# J. Lee Giddings

(Late Giddings & Son),

**COAL AND COKE  
MERCHANT,**

**Woking,  
and at  
Worplesdon.**

*Contractor to the London and County Councils.*

Order Offices: L. & S. W. R. COAL WHARF, WORPLESDON.  
,, MRS. HOWARD, St. John's Hill Road.

Head Office: FARMVILLE VILLAS, GOLDSWORTH ROAD  
(NEAR VICTORIA RAILWAY ARCH).

Truck Loads supplied on rail at Woking or Worplesdon. Prices on application.  
Coals of any size, quality or description, also Ashes, Hardcore, Chalk, Asphalt,  
Granite Chippings, Farnham Gravel, Sand for Building.

CARTING WORK DONE.

FURNITURE REMOVED.

## JOHN LOCK,

**House Decorator,  
Builder, &c., - -**

**1, SEYMOUR VILLAS, MAYBURY ROAD,  
WOKING.**

Repairs and Dilapidations, &c., under Personal Supervision.

**. . Estimates Free . .**

HIGH-CLASS  
LADIES'  
TAILOR,



BROADWAY,  
WOKING,



**W. BIDDISCOMBE,**  
(Next to P.O. Sorting Office).



COSTUMES

from  $2\frac{1}{2}$  GUINEAS.

A LARGE RANGE OF WEST END  
.. PATTERNS FOR SELECTION ..





# REMOVALS and WAREHOUSING.

*Improved Methods, Up-to-date Vans.*



*Experienced Workmen.*



**ESTIMATES FREE.**



**Competent men sent out at short notice  
to fix Blinds, Poles, Carpets, etc.**

**MODERATE CHARGES.**

*Equal Attention given to Large and Small Orders.*

**RE-UPHOLSTERING and REPAIRING  
BY SKILLED WORKMEN.**



**ESTIMATES FREE.**

**WHERE TO SHOP AT WOKING.**

**R. & S. COLMAN,**  
***Complete House Furnishers,***

28, 30, 32 and 34, Goldsworth Road,  
**WOKING.**

*We hold the Largest stocks in the District.*

*Inspection invited.*

**SPECIAL DEPARTMENTS FOR**

Furniture, Bedsteads, etc.,  
Carpets and Linoleums,  
Pianos and Mailcars,  
Curtains and Blankets,  
China and Glass,  
Household Ironmongery,  
Clocks and Watches,  
Electro-Plate and  
Silver Goods,  
Tools and Cutlery,  
Bicycles and Fittings.

*All Goods marked in Plain Figures at Lowest Cash Prices.*

**Illustrated Catalogue free on Application.**

**WHERE TO SHOP AT WOKING.**

# JOSEPH COMBER,

FROM WILSON & GILL, THE "GOLDSMITHS,"  
REGENT STREET, LONDON.

GOLDSMITH and SILVERSMITH,

**Chertsey Road,  
WOKING.**

Telephone No. 0171 Woking.



PEARLS,  
DIAMONDS,  
JEWELLERY,  
WATCHES,  
CLOCKS,  
OPTICS.



**OLD GOLD, SILVER  
and JEWELLERY  
PURCHASED or  
EXCHANGED.**

**Repairing and Remounting  
of every Description.**



WEDDING,  
CHRISTENING,  
BIRTHDAY  
AND  
BRIDESMAIDS'  
PRESENTS.



*The largest and most varied stock of articles  
suitable for complimentary gifts in the district.*





PART OF SHOW ROOM AT JOSEPH COMBER'S, GOLDSMITH, WOKING.

HERITAGE WALKS ARCHIVE DOCUMENT



WHERE TO SHOP AT WOKING.

**F. PULLINGER,**

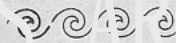
*FAMILY BREAD BAKER,*

. . Pastry Cook and . .

. . Confectioner. . . . .



VIENNA BREAD BAKED DAILY.



**4, THE PAVEMENT,**

*Chertsey Road,*

**WOKING.**~~~~~

*Also at Chobham Road.*

All kinds of Fancy B

Rolls, &c



Families Waited on

Daily.

**WHERE TO SHOP AT WOKING.**

# Your Income!

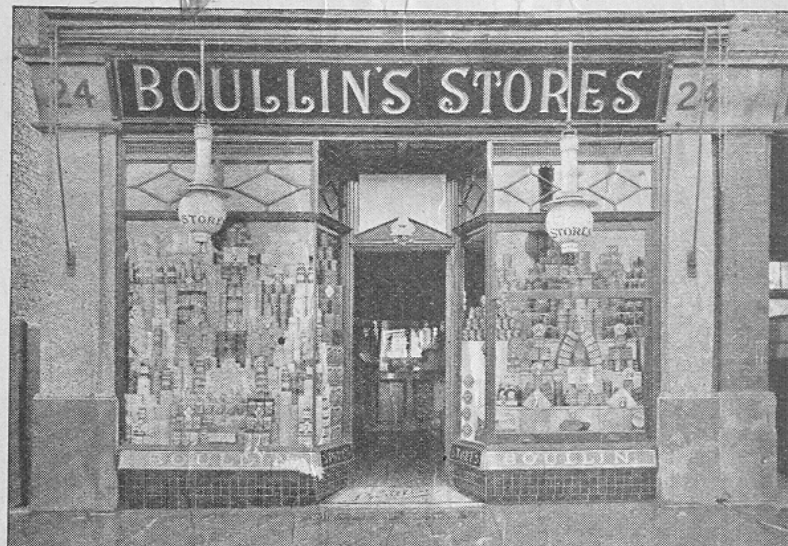
It is not what you receive but what you spend that makes you prosperous or otherwise. Saving threepence on this, twopence on that, and a penny on something else, by buying from **BOULLIN'S STORES**, in a little while spells prosperity, yet the goods are just the same as if the extra money was added to the price.

**TEA** is our speciality; we buy for CASH, we sell for CASH, and we ask you to give us CREDIT for giving the best possible value.

## **BOULLIN'S STORES,**

24, CHERTSEY ROAD.

WOKING;



THE SHOP FOR QUALITY AND ECONOMY IN HO



HERITAGE WALKS ARCHIVE DOCUMENT

**Robert Wasley,**

MEAT, FISH, POULTRY  
and GAME SALESMAN,

21 and 23, CHERTSEY ROAD, WORKING

Telephones—  
Meat 25  
Fish 150x

Telegraphic Ad  
"Tender,"



EXPRESS MOTOR DELIVERY.

DISTANCE NO OF