

ANCIENT MONUMENTS

The following ancient monuments remain in the district as a link with the past:

- The Pyrford Stone.
- Tumulus at Lynwood, Woodham Lane.
- Two barrows at south-east of Horsell Common.

BUILDINGS OF ARCHITECTURAL OR HISTORIC INTEREST

- Sutton Place, Sutton Park.
- The Old House, Old Woking.
- Woking Park Farmhouse, Old Woking.
- Woking Park Farm Barn, Old Woking.
- Hoe Place, Old Woking Road.
- The Old Post Office, Sutton Green.
- Bull Lane Cottages, Sutton Park.
- Lady Grove Farmhouse, Sutton Park.
- Manor House, Sutton Park.
- The Old Cricketers Inn, Westfield.
- Cox's Farmhouse, Whitmoor Lane, Sutton Green.
- The Old Cottage, Whitmoor Lane, Sutton Green.
- St. Mary's Church, Byfleet.
- Vanners, 128 High Road, Byfleet.
- Manor House, Mill Lane, Byfleet.
- Mill House, Mill Lane, Byfleet.
- Water Mill, Mill Lane, Byfleet.
- Hedges, 18 Rectory Lane, Byfleet.
- St. Mary's Church, Horsell.
- Old Well Farmhouse, Bullbeggars Lane, Horsell.
- Boyletts (Coombe Place), Carthouse Lane, Horsell.
- Esgairs, High Street, Horsell.
- Inwood, Barrs Lane, Knaphill.
- Remains of Old Hall (including Barn), Old Woking.
- St. Peter's Church, Old Woking.
- The Old Vicarage, Old Woking.
- The Old Cottage, 29 High Street, Old Woking.
- The Old Manor House, 159 High Street, Old Woking.
- 80, 82, 84, 86 and 88 High Street, Old Woking.
- Magnolia, 132 High Street, Old Woking.
- Ye Olde Brew House, 130 High Street, Old Woking.
- Elm Bridge Cottage, Kingfield Road.
- Old Oak Cottage, 17 Vicarage Road, Kingfield.

E. T. TROTMAN LTD.

**14 HIGH STREET
WOKING**

Telephone WOKING 61637/8

RADIO — TV

and

**ELECTRICAL
SPECIALISTS**

Sales and Service

Miele

Hacker

Dimplex

Bush

Kenwood

Murphy

Bendix

I.T.T./K.B.

A private company offering personal service



Albion House

(Photo by The County Press, Woking)

St. Nicholas Church, Pyrford.
 Summerhouse at Pyrford Place.
 Blue Gate Cottages, Boltons Lane, Pyrford.
 Stone Farmhouse, Lady Place, Pyrford.
 Glebe Cottage, Pyrford Green.
 Pyrford Place Farm Cottages.
 The Old House, Pyrford.
 Lees Farm Barn, Pyrford.
 Grove Cottage, Pyrford Green.

WOKING AS SHOPPING CENTRE

Shopping facilities in and around Woking are excellent. The main shopping centre is close by the railway station and this encourages visitors from neighbouring areas to come to the town for their needs. There are car parks for the motorist and road communications are good. Local residents are well served by the smaller shopping centres in the different districts in the town. Byfleet, West Byfleet, Pyrford, Maybury, Horsell, Old Woking, St. Johns, Westfield, Knaphill, Brookwood and Sheerwater all have their own shops providing most of the requirements.

NEWLANDS

BRIDGE HOUSE
GOLDSWORTH ROAD, WOKING

Tel. Woking 3611/2

SUPPLIERS OF HIGH QUALITY
SOLID FUEL and FUEL OILS
FOR DOMESTIC and INDUSTRIAL
USES

also at

191 Connaught Road, Brookwood

Tel. 3252

162 High Road, Byfleet

Tel. 45402



babyland

YOUR LOCAL SPECIALIST
FOR PRAMS - PUSHCHAIRS - COTS
AND ALL NURSERY REQUISITES

WITH A LARGE
TOY SHOWROOM
AT EACH BRANCH



33 Commercial Rd.
40 Goldsworth Rd. }

WOKING



BRANCHES ALSO AT GODALMING & ADDLESTONE



Sheer House, West Byfleet

(Photo by The County Press, Woking)

Woking and district has been fortunate in its development and has attracted many businesses to the town. There are several large modern establishments situated in the shopping areas. The Woking and District Chamber of Trade formed in 1898 as the Woking and District Tradesmen's Alliance has over 400 members representing the greater proportion of the traders in the district.

The Byfleet and Pyrford Chamber of Commerce was formed in 1930 and has a membership of approximately a hundred. These two chambers take an active interest in most local matters and have co-operated with the local authority on many items which improves local conditions and amenities.

INDUSTRY

As mentioned in the historical notes Woking has grown from a country market village to a town and is mainly residential. It has but little industrial history, its main occupation for many years has been market and nursery gardening. Brewing and printing are two of its oldest industries. The Gresham Press has been active since at least the beginning of the century. About this time " Mr. Newland's Rosewater and

WOKING GLASS WORKS

J. W. LANGTREE & H. F. LANGTREE, Props.



GLAZING CONTRACTORS

LEADED LIGHT MANUFACTURERS

DOUBLE GLAZING

PLATE GLASS REPLACEMENTS

TABLE TOPS AND MIRRORS

MIRRORS RESILVERED

ALL TYPES OF SHEET AND OBSCURE GLASSES



27 NORTH ROAD, WOKING

Telephone 3100



Sheerwater Industrial Estate

(Photo by The County Press, Woking)

Essential Oil Distillery" was providing employment. A 17th century map shows an iron mill and later there were one or two water mills operating in the area.

The nursery gardens have been in existence for many years and today they make an important contribution to the export market. The largest employer in Woking today is the packing and jointings firm of James Walker & Co. Ltd. The large aircraft factory of Vickers in Weybridge provides employment for a number of people living in Woking.

The main industrial areas are: Oyster Lane, Byfleet; Sheerwater; Monument Bridge and Old Woking. The presence of the aircraft factory in nearby Weybridge encourages the allied trades and aero engine parts, navigational aids, safety belts, parachutes and other aircraft apparatus are made in the area. The Monument Bridge and Old Woking sites are provided by the Council primarily for relocating industries which are at present unsuitably sited.



NON FERROUS
METAL MERCHANTS
AND PROCESSORS

TURNERS
of
WOKING

Offices and Works

**CLARENCE AVENUE
WOKING - SURREY**

Telephone: Woking 63440

See page 53

It is suggested that readers wishing to know more of the history of the town should enquire at the public library. The Librarian will be pleased to advise regarding the availability of books on local history.

The writer is indebted to the following sources for the material used in these historical notes.

The Victoria History of the County of Surrey, 4 vols.

A Guide and Short History of St. Nicholas, Pyrford (pamphlet) and official publications.

The family business of TURNERS OF WOKING is engaged in the handling of strictly non ferrous metal scrap.

Processes include baling, sorting, shearing and mechanical handling and involves buying of scrap copper wire, copper alloys, lead, aluminium and all residual assets, transforming basic raw material into semi-finished product ready for the consumer smelting industry. Handling 56 different metals, the firm is able to handle small amounts to large quantities at top market prices, with pay out in cash depending on quality and quantity. The trend for using more sophisticated metals is becoming more common—TURNERS OF WOKING are able to identify and price these commodities on application. Due to the town centre re-development the business will be re-located on a new siting as soon as convenient.

Estimates for full or partial

CENTRAL HEATING SYSTEMS

INDIVIDUALLY DESIGNED TO YOUR NEEDS consult

ROBERT KIRBY LTD.

PLUMBING AND HEATING ENGINEERS

75 MAYBURY ROAD, WOKING

Tel. Woking 61910

SOLID FUEL - GAS - OIL

Loans arranged
N.C.B. Housewarming Plan, etc.

Shell Mex and
B.P. Appointed Installer

TOBACCO FACTORS
FANCY GOODS MERCHANTS
WHOLESALE
CONFECTIONERS
REGULAR DELIVERIES
TO ALL PARTS
N.W. SURREY

ALBERT POCOCK LTD.

CAVENDISH HOUSE
WEST STREET
WOKING
Phone 60979

Retail Department:

9 CHERTSEY ROAD
WOKING
Phone 60979

COMPREHENSIVE STOCK OF
**HAVANA, JAMAICAN and
DUTCH CIGARS**

Agents for
RONSON, COLIBRI
and DUNHILL LIGHTERS
DUNHILL, ORLIK
and CHARLING PIPES

BROADWAY STAFF AGENCY

**7 THE BROADWAY
WOKING 66123**

Always a wide selection of vacancies in
this area for Professional, Administrative,
Technical, Secretarial and Clerical Staff,
Full- and Part-time

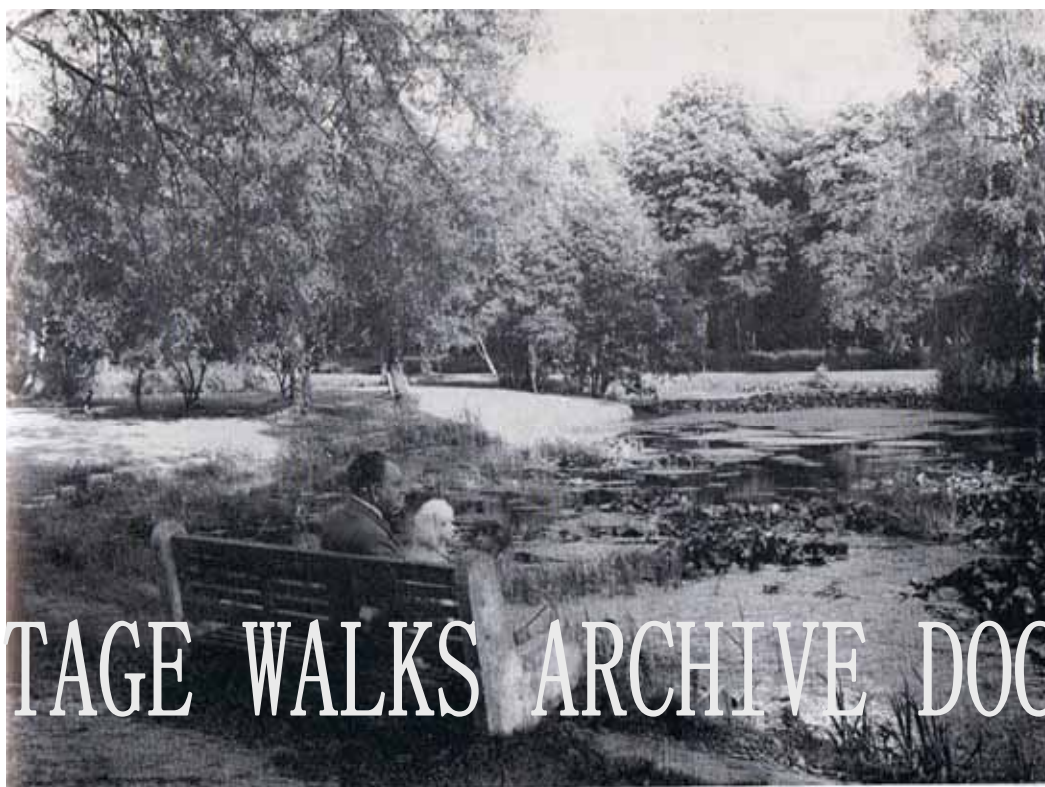
London vacancies through our Associate Offices

Monday to Friday 9 a.m. to 12 noon and 1 to 5 p.m.

Saturday 9.30 a.m. to 1 p.m.

Evening appointments by arrangement

NO FEES TO STAFF



Woking Park

SERVICES AND AMENITIES

Open Spaces, Parks and Recreation Grounds

Woking Park is one of the most picturesque pleasure grounds not only in Woking but in the whole county and the grounds are laid out in a particularly attractive manner.

Facilities are provided for cricket, hockey, netball and tennis (hard and grass courts) and there is also an excellent bowling green and a putting course.

A corner of the Park has been set aside and suitably equipped as a children's playground.

In 1935 an open-air swimming pool was opened by His Grace the Duke of Sutherland, K.T., and has become the focal point of the amenities of the Park. The Pool is attractively designed and has been constructed to harmonise with its beautiful environment. There has since been added a children's paddling pool.

Recreation grounds are provided in various parts of the Urban District (See Classified Information).

There is an Athletic Ground with a seven-lane cinder track to international standards on the Sheerwater Recreation Ground and provision is being made for the principal field events.

Paul Graham

Woking's Leading Hairdressing Salon

offer you

THEIR TWO TIER SYSTEM

THE ORCHID SCHEME

or

OUR GENERAL PRICE LIST

Ring Woking 63225

COMMERCIAL ROAD - WOKING

★ SCHOOLWEAR FOR THE LOCAL SCHOOLS ★

Q
U
A
L
I
T
Y

A
N
D

S
E
R
V
I
C
E

THE BOYS' SHOP

SYDNEY BAILEY LTD.

21 CHOBHAM RD.
WOKING

Telephone
65444

U
N
I
F
O
R
M
S

A
N
D

C
A
S
U
A
L
S

★ SCHOOL CLOTHES SCHOOL CLOTHES ★



Woking Swimming Pool

(Photo by The County Press, Woking)

SPORT

Ample facilities are provided in the district for all kinds of sport. Provision is made for bowling, table tennis (outdoor), tennis (grass and hard courts), putting, cricket, football and hockey, archery, athletics and swimming in the various public Recreation Grounds and in Woking Park, as well as upon private grounds such as Woking, Horsell and Vickers-Armstrong's Sports Grounds.

The Woking Sports Ground at Kingfield is the headquarters of the Woking Football Club, which is a member of the Isthmian League.

There are five Golf Courses in the district (See Classified Information).

The area is famed for its Rifle Shooting facilities, the headquarters of the National Rifle Association being situated at Bisley Ranges which are on the fringe of the district at Knaphill.

In addition, the Guardian Rifle Club has a miniature range at Kingfield.

The Woking Swimming Club has its headquarters at the Swimming Pool in Woking Park, and stages an attractive annual gala there.



PETER KARN LTD.

Turf Accountants

131 HIGH STREET, OLD WOKING

also at

34 HIGH STREET, KNAPHILL

36 BAKER STREET, WEYBRIDGE

32 CHERTSEY ROAD, WOKING

CHURCH PATH, WOKING



Credit Accounts Welcomed



Waters Park, Knaphill

(Photo by The County Press, Woking)

The Surrey County Championship Road Relay Race is held at Woking each year.

The Woking Lawn Tennis and Croquet Club and West Byfleet Tennis Club arrange attractive tournaments on their courts and greens at Hook Heath and West Byfleet.

Abundant opportunities for riding are afforded by the open spaces surrounding Woking. This is also catered for by Riding Establishments.

For motor racing enthusiasts, the Crystal Palace, Thruxton and Silverstone Circuits are within easy reach.

The River Wey, which is navigable as far as Guildford, affords excellent opportunities for boating and fishing. Four or five miles of water, well stocked with trout, roach, perch, bream, etc., in the picturesque neighbourhood of Newark Priory, Broadmeads, Sand and Runtley Wood, Sutton Green, are controlled by the Woking and District Angling Association. The Byfleet Angling Club control stretches of the Wey Navigation for fishing purposes.

MUSIC, DRAMA AND ART

Lovers of music are well catered for by the Woking Choral Society, Woking Music Club, Woking Orchestral Society and

Woking Music Festival, the latter being a competitive event held annually and attracting entries from all over the county.

There are several Amateur Dramatic Societies in the district (See List of Organisations) while the larger firms in the district have their own societies.

There is an enthusiastic Society of Arts which has done much to foster the study of water-colour drawing by its annual exhibition of pictures and a Photographic Society which also holds an annual exhibition.

RAIL FACILITIES

The district is exceptionally well served by British Rail, Southern Region.

Woking Station, which is on the Portsmouth, Southampton and West of England lines of the system, is one of the most important junctions between London and the coast, and there is a frequent and convenient service of both diesel and electric trains.

For residents who travel regularly to London the facilities are particularly good, the fast trains covering the 25 miles between Woking and Waterloo in 27 minutes.

In addition to Woking there are four other stations in the Urban District, namely—Brookwood, West Byfleet, Byfleet and New Haw, and Worplesdon.

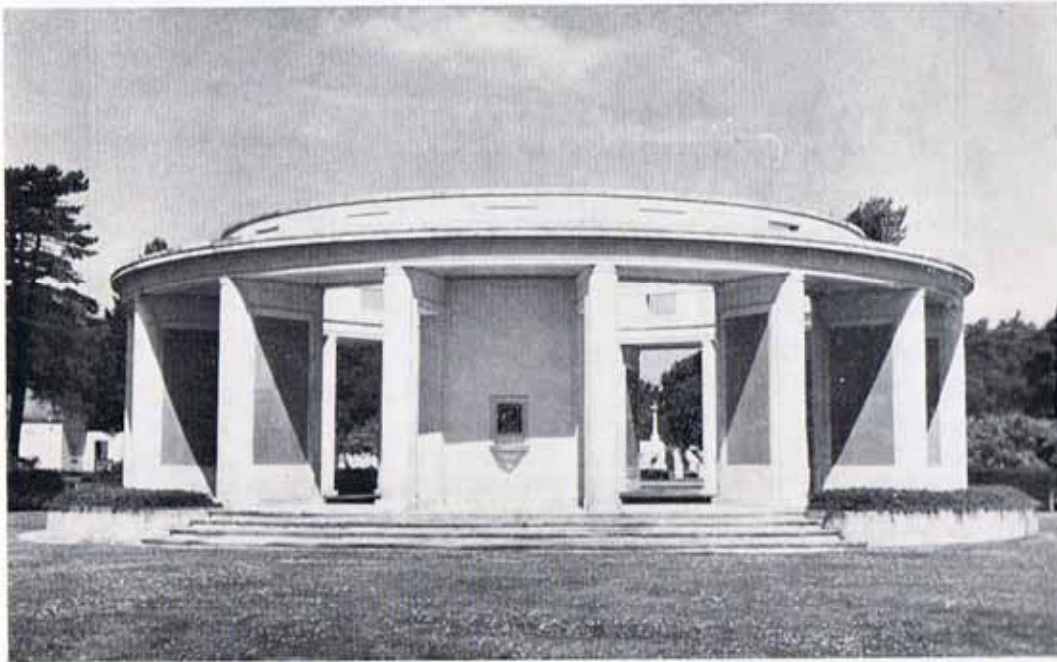
OMNIBUS FACILITIES

There is a very comprehensive omnibus service in the district which not only links up the outlying parts of the area with the town and station, but also provides regular connections with the neighbouring towns.

In addition, Green Line coaches of the London Transport Board run an hourly service to London and Stevenage, while the Board and the Aldershot and District Traction Company operate numerous omnibus and coach services throughout the district.

AVIATION

Fairoaks Aerodrome, Chobham, situated on the district boundary north of Horsell Common, provides facilities for private flying.



Commonwealth Memorial, Brookwood

(Photo by The County Press, Woking)

HERITAGE WALKS ARCHIVE DOCUMENT

For Bibles, Prayer Books
and Christian Literature
visit

THE BEREAN BOOKSHOP

26 High Street, Woking

Telephone 5358

FOR THE BEST

in

CARPETS

WILTONS, AXMINSTERS,
ACRILAN, ENKALON, SISALS, etc.
CHINESE & WOOL RUGS

FURNITURE

LEADING MANUFACTURERS

LIGHTING

LARGE SELECTION

CURTAIN FABRICS

WIDE RANGE DRALONS, SHEERS
COTTON & SCANDINAVIAN FABRICS etc.

GIFTS • GLASS • ENAMEL

Home Design

1-2 RYDE HOUSE
CHOBHAM ROAD
WOKING Tel. 2700

CLASSIFIED INFORMATION

Public and Local Services
(prepared in October, 1969)

ADMINISTRATION

The Woking Urban District Council governs the area, and consists of 36 members. The Urban District comprises the civil parishes of Woking, Horsell, Byfleet and Pyrford, and is divided into nine wards; each ward returning four members to the Council.

The Council Offices are in Guildford Road, Woking.
Telephone: Woking 5931 - 18 lines.

Council Meetings: The Council work to a 5/6-week cycle. Their meetings are held on appropriate Tuesdays at 6.30 p.m. The date of the next meeting is posted on the direction board outside the Council Offices and other dates can be obtained from the Clerk of the Council.

Officers

Clerk and Solicitor: Registrar of Local Land Charges.
M. Shawcross.
Engineer and Surveyor: D. N. Ward, C.E., M.I.C.E., F.I.Mun.E.
Treasurer: A. J. Taylor, F.I.M.T.A., F.R.V.A.
Medical Officer of Health: Dr. P. L. Karney, M.B., B.S., D.P.H.
Chief Public Health Inspector: A. Barnett, M.A.P.H.I.
District Education Officer: Miss J. M. Paddon, M.A.
District Librarian: G. R. Wells, A.L.A.

Statistics

Area of Urban District: 15,712 acres.
Population: 77,220 (mid-1968).
Rateable Value: £3,765,552 (October 1969).
General Rate: 13/8d. in the £ (1969/70).
Early Closing Day: Monday or Wednesday.
Licensing Hours: Mondays - Thursdays — 10.30 a.m. - 2.30 p.m., 5.30 p.m. - 10.30 p.m.; Fridays and Saturdays— 10.30 a.m. - 2.30 p.m., 5.30 p.m. - 11 p.m.; Sundays— 12 noon - 2 p.m., 7 p.m. - 10.30 p.m.
Market Days: Goldsworth Road: Fridays and Saturdays.
Area of Parks and Open Spaces: 1,231 acres.
Altitude: Town Centre: 124.2 feet. Climate: mild. Sub-soil: Bagshot sand.
Position: North-West Surrey.

MAIN SERVICES

Water

The district is provided with water by the Woking and District Water Company, the supply being obtained from wells

TYLERS of BYFLEET
(Ironmongers) LTD

GARDEN REQUISITES

DO-IT-YOURSELF SUPPLIES

TOOLS - STEPS

WALLPAPER - PAINT

HARDWARE

KEY-CUTTING SERVICE

**18 STATION APPROACH,
WEST BYFLEET, SURREY**

Telephone Byfleet 45178



Isabel Smith's
Wool Shop

Knitting Wools and Cottons in all well-known brands . . . Nylon, Courtelle and Acrylic Yarns. Rug Wool and accessories. Bubbly Cotton and Lyscordet. Knitting Patterns including modern, teenage and all the latest designs. Art Needlework and Embroidery Threads.

17 HIGH STREET. WOKING

Telephone Woking 61165

at Chertsey, Clandon and Horsley and also from the River Thames.

The office of the Chief Engineer and Manager is at Guildford Road, Woking.

Gas

Gas is supplied by the South Eastern Gas Board whose local showrooms are at 3 Guildford Road, Woking.

Standard Rate Tariff. Domestic Two-part Tariff: Available on application subject to conditions in the Board's current tariffs.

Electricity

Electricity is supplied by the South Eastern Electricity Board, whose showrooms are in Chobham Road, Woking.

Charges are as follows:

Domestic Two-Part Tariff: Fixed annual charge based on external measurements of floor area of property, plus a charge per unit for current consumed.

Allotments

The Council maintain approximately 500 allotment plots in the Urban District. Enquiries to The Treasurer, Council Offices, Woking.

Ambulance

Ambulance Stations—Walton Road and Boundary Lane, Woking.

Banks

Barclays—Chertsey Road, Woking; Byfleet; Knaphill; West Byfleet.

National Provincial—Chertsey Road, Woking.

Lloyds—Commercial Road, Woking, Byfleet, Kingfield, Knaphill, St. John's, West Byfleet.

Westminster—High Street, Woking, West Byfleet.

Midland—Commercial Road, Woking, Byfleet.

Trustee Savings Bank—Commercial Road, Woking.

District Bank—44 Commercial Road, Woking.

Car Parks

Car parks are provided in convenient positions near the centre of the town, whilst West Byfleet is also well served in this respect.

If you are in a rut or your job
gets you down why not call at the

DAVIS STAFF BUREAU

1a ORIENTAL ROAD, WOKING Telephone 5659/5161
and at 12 Farnham Road, Guildford Telephone 64581/3

Hours: 9 - 5.15 Monday to Friday 10 - 12 Saturday

Wide Variety of Jobs - Male/Female - Permanent/Temp/Part-time
Secretarial - Technical - Executive No Fees to Applicants

SILVIO

Gents Hairdressers

Quick Service

8 CHURCH PATH - WOKING

J. H. BARRENGER LTD.

Luggage ★ Leathergoods ★ Trunks

A wide range of HANDBAGS
(Plastic and Leather)
(always in stock)

BRIEF CASES
WALLETS
PURSES, ETC.

55 Commercial Road, Woking Tel. 60715

PROMPT REPAIRS DONE IN OUR OWN WORKSHOPS
ON PREMISES

CLOSED ALL DAY WEDNESDAY

The main parking places are as follows: Goldsworth Road, Commercial Road, Sheer House (West Byfleet), Maybury Road, Church Street, Clarence Avenue, Heathside Crescent, Stanley Road, Station Approach (West Byfleet), Chobham Road, Duke Street, Coronation House, Heathside Road, Brewery Road, Englefield Road (Knaphill), Boundary Lane.

Cemeteries

Brookwood Cemetery, which is known all over the world, is situated in the western part of the district. It is owned by the London Necropolis Co. Ltd., extends over an area of 360 acres and is one of the most famous and extensive cemeteries in the country, situated as it is in peaceful surroundings amidst beautiful pines.

Various London parishes and communities have their own burial grounds in the Cemetery.

The military graves are in a special section of the cemetery and there are permanent war memorials to the fallen in both World Wars. The memorial to the Commonwealth soldiers who died in the 1939 - 1945 War and have no known graves was unveiled by Her Majesty the Queen in October, 1958.

The military section, in which national services are held annually and to which frequent visits are paid by overseas contingents, comprises the largest number of Allied military graves in the United Kingdom. The "Last Post Ceremony" was transferred here from France in 1941 and is commemorated on the first Sunday of each month by a parade.

The Muslim and Parsee sections are national centres.

Gifts of trees from Canada, Australia and New Zealand have been received and planted and, in return, oaks from Brookwood have been planted in their Service burial grounds.

A separate area with its own entrance has been set aside—known as the Glades of Remembrance—for the reception of cremated remains only.

Commons, Open Spaces, Parks and Recreation Grounds

The main open spaces are Bisley Common, Castle Green, Cowshott Common, Coxhill Green (part of), Horsell Common, Horsell Moor, Kingfield Green, Littlewick, Mill Moor, Prey Heath, Pyrford, St. John's Lye, Sheet's Heath, Smart's Heath, Westfield, Well Lane.

Public Parks and Recreation Grounds—Anthony Waterer (Knaphill), Brookwood, Byfleet, Queen Elizabeth Gardens, Horsell, Knaphill, Old Woking, Sheerwater, Sutton Green, West Byfleet and Woking Park.

Susan Gay SEPARATES

The fashion centre for
ALL ages

Coats - Suits - Dresses - Slacks - Skirts
Knitwear - Blouses - Hosiery - Etc.

A WONDERFUL SELECTION OF THE BEST NAMES IN THE
WORLD OF FASHION ALWAYS IN STOCK

With the fabulous "Honey" Boutique on the first
floor—everything for the with-it Miss

"STORK CORNER" on the ground floor—for the modern
mother-to-be

56 CHERTSEY ROAD, WOKING
Telephone 2155

RICHARD W. CLIFTON

HORTICULTURAL
ENGINEERS

Mower and Cultivator
Sales and Service

7 HIGH STREET, KNAPHILL
WOKING, SURREY

Brookwood 2977/8





Woking Park

(Photos by The County Press, Woking)

Crematorium—Woking Crematorium in Hermitage Road, St. John's, was erected in 1885 and is the oldest in England.

Chambers of Trade—Woking and District Chamber of Trade—Hon. Sec., E. A. Radford, Cambridge House, Woking; Byfleet and Pyrford Chamber of Trade—Hon. Sec., J. E. Thompson, "Foxton", 78 Old Woking Road, West Byfleet.

Cinemas—The Odeon, Duke Street; Ritz, Chobham Road.

Citizens' Advice Bureau—6a Guildford Road, Woking.

Clerk to the Justices—G. L. Whiteside, B.A., 5 High Street, Woking.

Coroner—Col. G. M. McEwan, H.M. Coroner, Woking, Surrey.

Court House—Heathside Road, Woking.

Distances—London 26 miles; Bagshot 8 miles; Guildford 7 miles; Kingston 15 miles; Staines 9 miles; Windsor 15 miles.

Education—District Education Office: Block E, Council Offices, Woking.

FRED G. RICE

(Proprietor: W. Harker)

General and Furnishing Ironmonger

KNAPHILL

Tel. Brookwood 2103

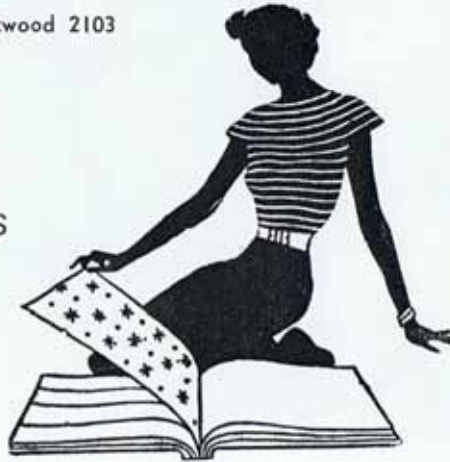
CHINA and GLASS

LAMPS and STOVES

BRUSHES and PLASTICS

GARDEN and
TRADE TOOLS

PAINTS and
WALLPAPERS



R. H. Taft

Soft Furnishings

and Carpet Specialist

**1 OLD WOKING ROAD
WEST BYFLEET**

Telephone Byfleet 45276



Winston Churchill School, St. John's

(Photo by The County Press, Woking)

There are two Grammar Schools in the district, six Secondary Schools and 25 Primary Schools including three Roman Catholic Schools and one Special School.

For educational administration purposes the Urban District is an Excepted District.

There are also a number of Private Schools in the district.

Further education facilities include Evening Institute Classes for persons of all ages at Woking Technical Institute and all County Secondary Schools in the district. Full particulars of educational facilities and list of schools may be obtained from the District Education Officer, Council Offices, Woking.

Fire Station—Church Street, Woking.

Golf Courses—New Zealand; West Hill; West Byfleet; Woking; Worplesdon.

Halls—The following halls in the district are used regularly for dances, entertainments and other social functions: Atalanta Ballroom; Brookwood Memorial Hall; Byfleet Village Hall; Christ Church Hall; Horsell Parish Hall; Knaphill British Legion Hall; Labour Hall, Clarence Avenue; Lion Works Social Club; Mayford Village Hall.

HERITAGE WALKS ARCHIVE DOCUMENT

HEALTH AND WELFARE SERVICES

HEALTH DEPARTMENT, BLOCK F, COUNCIL OFFICES, WOKING

CLINICS

WOKING	Clarence Avenue	Child Health Clinic General Medical Ante-Natal	Every Wednesday 2 - 4 p.m.
	7 Clarence Ave.	Dental Eye Clinic Speech Clinic Well Woman	
	Penlee, Claremont Ave.	Child Guidance Speech Dental	
BYFLEET	Methodist Hall, Rectory Lane	Child Health Clinic General Medical Dental	Every Wednesday 2 - 4 p.m.
	Village Hall, Byfleet	Day Centre for the Elderly and Disabled	
WEST BYFLEET	Ex-Service Men's Hut, Camphill Rd.	Child Health Clinic	Every Tuesday 2 - 4 p.m.
HORSELL	The Parish Hall	Child Health Clinic	Every Friday 2 - 4 p.m.
KNAPHILL	Trinity Church Hall, Chobham Road	Child Health Clinic General Medical Ante-Natal	Every Friday 2 - 4 p.m.
WESTFIELD OLD WOKING	Community Centre, Sundridge Rd., Old Woking	Child Health Clinic Day Centre for the Elderly and Disabled	Every Tuesday 2 - 4 p.m.
ST. JOHN'S	Memorial Hall	Child Health Clinic General Medical	Every Thursday 2 - 4 p.m.
SHEERWATER	St. Michael's Hall	Child Health Clinic	Every Monday 2 - 4 p.m.
MAYBURY	Youth Centre, Alpha Road	Child Health Clinic	Every Thursday 2 - 4 p.m.
PYRFORD	The Village Hall	Child Health Clinic	Every Monday 2 - 4 p.m.
BROOKWOOD	Memorial Hall	Child Health Clinic	2nd and 4th Monday 2 - 4 p.m.
MAYFORD	The Village Hall	Child Health Clinic	1st Wednesday 2 - 4 p.m.
THE WESTGATE CENTRE	Chobham Road, Woking	Day Centre for the Elderly and Disabled	
		Geriatric Clinic	
		Industrial Workshop for the elderly and disabled	

All clinics, except Child Health
Clinics, are by appointment

For further details, please apply to:—

Medical Officer of Health, Council Offices, Woking. Tel. Woking 5931.

Welfare Food Services—The Welfare Foods may be obtained from any of the aforementioned Child Health Clinics. In addition, the W.R.V.S. distribute as follows:

42 Boundary Road, Woking: Monday, Wednesday, Friday, 10 a.m. to 12 noon; Tuesday, 9.30 a.m. to 4 p.m., Thursday, 10 a.m. to 4 p.m.

District Nurses and Midwives

Area Nursing Officer (Office)

1 Ulwin Avenue, Byfleet

30 High Street, Horsell

16 The Grove, Horsell

181 Woodham Lane, West Byfleet

165 Hermitage Woods Cres., St. John's

169 Albert Drive, Sheerwater

37 St. John's Road, St. John's

St. Fillans, Maybury Hill—Flat 1

Flat 2

Carberry, Kingfield Road—Flat 1

Flat 2

Flat 3

Telephone:

Woking 5931

Byfleet 42658

Woking 60511

Woking 2598

Byfleet 45448

Brookwood 4248

Byfleet 42606

Woking 5736

Woking 62461

Woking 62483

Woking 63559

Woking 63641

Woking 64469

Home Help Service—The Supervisor, Health Department, Block F, Council Offices, Woking.

Hospital Services

Woking and District Victoria Hospital, Chobham Road, Woking (General Training School affiliated to St. Peter's Hospital, Chertsey).

Woking Maternity Hospital, Heathside Road (Training School for Midwives).

Brookwood Hospital, Knaphill.

Rowley-Bristow Orthopaedic Hospital, Pyrford.

Hotels (Licensed)

Cotteridge Hotel, Constitution Hill.

Mayford Manor Hotel, Guildford Road, Mayford.

Wheatsheaf Hotel, Chobham Road.

Red House Hotel, Chobham Road.

Railway Hotel, Guildford Road.

Maybury Hotel, Maybury Hill.

Star Hotel, Wych Hill.

Blue Anchor Hotel, High Road, Byfleet.

Byfleet Hotel, Station Approach, West Byfleet.

Brookwood Hotel, Connaught Road, Brookwood.

Private Hotels and Guest Houses

Crosslee Hotel, Heathside Crescent.

Northfleet Guest House, Claremont Avenue.

Information Bureau—Clerk's Department, Council Offices, Woking.

Inland Revenue, Board of—H.M. Inspector of Taxes: Commercial House, Chapel Street, Coronation House, Guildford Road, and 8/10 Commercial Road.

Libraries—Public Libraries in the Urban District are administered by the Council on behalf of the Surrey County Council.

Central Library: Commercial Road, Woking—Lending and Reference Libraries; Newspapers and Periodicals. 9.30 a.m. - 6.30 p.m. every weekday (Tel. Woking 3391).

Picture Lending: A scheme for the lending of pictures operates from the Central Library.

Branch Library: The Corner, West Byfleet—Lending Library; Reference Section; Periodicals. Monday, Thursday, Saturday, 10 a.m. - 5 p.m. Tuesday, Friday, 10 a.m. - 7 p.m. (Tel. Byfleet 43955).

Branch Library, High Street, Knaphill—Lending Library; Reference Section; Periodicals. Monday, Wednesday, Saturday, 3 p.m. - 6 p.m. Tuesday 10 a.m. - 1 p.m., Friday 10 a.m. - 1 p.m., 3 p.m. - 6 p.m. (Tel. Brookwood 3394).

Branch Library: High Road, Byfleet—Lending Library; Tuesday 10 a.m. - 1 p.m., 2 p.m. - 5 p.m.; Wednesday 10 a.m. - 1 p.m., 2 p.m. - 5 p.m.; Thursday 10 a.m. - 1 p.m., 2 p.m. - 5 p.m.; 6 p.m. - 8 p.m.; Friday 10 a.m. - 1 p.m., 2 p.m. - 5 p.m.; Saturday 10 a.m. - 1 p.m., 2 p.m. - 5 p.m. (Tel. Byfleet 45274).

Ministries

Ministry of Employment and Productivity, Coronation House, Guildford Road.

Ministry of Social Security, Lynton House, Station Approach, Woking.

Ministry of Agriculture, Fisheries and Food (Forestry Commission), Danesfield, Grange Road, Horsell, Woking.

National Assistance Board—Lynton House, Station Approach, Woking.

Newspapers

Surrey Advertiser, 52 Chertsey Road, Woking (Wednesday and Saturday).

Woking Herald and News, 81 Chertsey Road (Weekly).

Woking News and Mail, 52 Chertsey Road (Weekly).

Woking Review, 1 Duke Street (Monthly).

Old People's Welfare—The well-being and comfort of the old people of the district is looked after by the Old People's Welfare Sub-Committee. Enquiries to 6a Guildford Road, Woking.

The Westgate Centre, which is a Centre for the Elderly, is in Chobham Road, Woking.

Old People's Homes controlled by Surrey County Council

The Pines, Woodham Road, Horsell.

Hale End, Hook Heath Road, Woking.

Arreton House, Home for the Aged Blind, Shores Road, Horsell.

Heathfield Home for the Elderly, Coley Avenue, Woking.

Provided by Voluntary Organisations

Methodist Home for Aged Ladies, Woodbank, Hollybank Road, Hook Heath.

Church Army Sunset Home, Horsell Lodge, Woking.

Kingsbury, Coley Avenue, Woking.

Smiles Home for Invalid Ladies, Maybury Hill.

Clock House, Byfleet (Fellowship Houses Trust).

Wynberg, Oriental Road—Southern Railway Home.

Convalescent Homes

St. Peter's Convent, Maybury Hill.

W. G. REEVES

(L. & D. Oliver Ltd.)

Provision Merchants



8 THE BROADWAY, WOKING

Private Nursing Home

Nuffield Nursing Homes Trust, Shores Road.

Private Nursing Homes for the Elderly

Blackdown House, Old Woking Road.

Mayhurst (Woking) Elderly People's Home, 9 Mayhurst Avenue.

Tamerton, Brooklyn Road.

Omnibus Services—The following are some of the main omnibus services and their routes:

London Transport

Walton via New Haw, Addlestone and Weybridge.

Ripley via Old Woking and Send.

Staines via Addlestone and Chertsey.

Guildford via Old Woking, Send, Burnt Common and Burpham.

Guildford via Old Woking, Send, Burnt Common, Clandon, West Clandon and Merrow.

Green Line Service

Stevenage via Walton, Kingston, Richmond and Hyde Park Corner.

Aldershot and District Traction Co.

Guildford via Horsell, Knaphill, Brookwood, Pirbright and Worplesdon.

Guildford via Kingfield Green, Mayford and Stoke.

Cove via Knaphill, Bagshot and Camberley.

Chertsey via Ottershaw.

Aldershot via St. John's, Knaphill, Brookwood, Blackdown and Frimley Green.

Sunningdale via Chobham and Windlesham.

There are also express services to the coast and places of interest during the summer months.

Organisations

There are approximately 200 organisations in the district embracing Art, Music, Drama, Sport, Horticulture, Philanthropic, Photographic, Political, Pre-Service, Service and Ex-Service, Townswomen's Guilds, Women's Institutes, Youth Clubs and Community Associations, a full list of which may be obtained on application to the Clerk of the Council, Council Offices, Woking.

Parliamentary Constituency of Woking

Urban Districts of Woking, Frimley and Camberley, and Rural District of Guildford (part).

Member: Cranley Onslow, Esq., M.P., Chobham Park House, Chobham, Surrey.

Deputy Electoral Registration Officer: M. Shawcross, Council Offices, Woking.



Old People's Flats at Maybury

(Photo by The County Press, Woking)

Postal and Telephone Services

Postal Facilities

Head Post Office: Commercial Road, Woking.

Sorting Office: White Rose Lane, Woking.

(Sorting and Distributing Office for all mail consigned to Dorset, Hampshire and the Isle of Wight).

Telephone Services

London (S.W.) and Guildford Areas

Exchanges at Woking, Byfleet, Worplesdon and Brookwood.

A separate Telephone Directory for the whole of the district is issued by H.M. Postmaster-General.

Public Control Department

116 Goldsworth Road, Woking.

Registration of Births, Marriages and Deaths

Sharrard House, Heathside Road, Woking.

Schools (See Education, page 69).

Slipper Baths

The Baths are situated in Boundary Lane, Woking, adjacent to the Car Park, Chobham Road, Woking.

Hours of opening: Women—Thursday 5 p.m. - 8.30 p.m.

PLACES OF WORSHIP

The district is well supplied with places of worship as the following list will show.

Church of England

All Saints', Woodham Lane,
Woodham.

All Souls', New Lane,
Sutton Green.

Christ Church, Church
Street.

Church of the Good
Shepherd, Pyrford.

Church attached to
Brookwood Hospital,
Knaphill.

Emmanuel Mission Church,
Saunders Lane.

Holy Trinity, Chobham
Road, Knaphill.

St. Andrew's Mission
Church, Russell Road,
Horsell.

St. John the Baptist,
Church Road, St. John's.

St. John's, West Byfleet.

St. Mary of Bethany,
Mount Hermon/York
Roads.

St. Mary's, Rectory Lane,
Byfleet.

St. Mary's, Church Hill,
Horsell.

St. Michael's,
St. Michael's
Road, Sheerwater.

St. Nicholas, Church Hill,
Pyrford.

St. Paul's, Oriental Road.

St. Saviour's, Connaught
Road, Brookwood.

St. Thomas's Mission
Church, Littlewick,
Horsell.

Woking Parish Church
(St. Peter's), Church
Street, Old Woking.

Westfield Mission Church,
Westfield Road.

Free Churches:—**Congregational**

Station Road,
West Byfleet.
York Road, Woking.

Methodist

Connaught Road,
Brookwood.
Rectory Lane, Byfleet.
The Broadway, Knaphill.
Devonshire Avenue,
Sheerwater.
Brewery Road, Woking.

Baptist

Anthony's, Horsell.
Kingfield (High Street,
Old Woking).
Percy Street.

Strict Baptist

Cheapside, Horsell.
Lower Knaphill.
Westfield Road, Mayford.

Plymouth Brethren

Marlborough Road.
Portugal Road.
West Byfleet.

Salvation Army

Church Street.
Binfield Road, Byfleet.

**The Chapel,
St. Columba's
Retreat Home**

(Photo by
The County Press,
Woking)



Mission Halls

Courtenay Mission,
Walton Road.
Manor Road, Horsell.
Station Road, West Byfleet

Presbyterian Church of England

St. Andrew's, White Rose
Lane.

Roman Catholic

Our Lady Help of Christians,
Madeira Road, West
Byfleet.
Our Lady Mother of God,
Kingfield Road.
St. Dunstan's, White Rose
Lane.
St. Edward's, Sutton Park.
St. Hugh's, Victoria Road,
Knaphill.
St. John the Evangelist,
Dartmouth Avenue,
Sheerwater.

Police

Chief Superintendent: Police Station, Heathside Road,
Woking.

Church of Christ

Hope Chapel, High
Street, Knaphill.

First Church of Christ, Scientist

Heathside Road,
Woking.

The Society of Friends (Quakers)

Meetings on Sundays
41 Park Road, Woking.

Muslim

Shah Jehan Mosque,
Oriental Road.

INDEX TO ADVERTISERS

Automobile Engineers, Repairs & Hire		Employment & Staff Bureaux	
Sheerwater Motors Ltd.	42	Albion Personnel Services	84
Wadhams Ltd.	23	Broadway Staff Agency	54
		Davis Staff Bureau	66
		Woodleigh Staff Bureau	2
Bakers & Confectioners		Estate Agents, Auctioneers, Surveyors, etc.	
Bell Butler	38	Athertons	Street Plan
		Chancellors & Co.	Outside Back Cover
Booksellers		Gascoigne-Pees	Inside Front Cover
The Berean Bookshop	61	Mann & Co.	1
Builders & Decorators, Heating, etc.		Florist	
H. Mullins	4	Eve French	4
Peak Contractors (Woking) Ltd.	21	Fuel Merchants	
Pinewood Developments Co. Ltd.	42	Newlands	48
R. Pain & Sons Ltd.	28	Funeral Directors	
Robert Kirby Ltd.	53	H. Ingram & Sons Ltd.	20
Commission Agents		Gents' & Boys' Outfitters & Tailors	
Peter Karn Ltd.	58	Sydney Bailey Ltd.	56
Cooked Meats		Gents' Hairdresser	
W. G. Reeves	75	Silvio	66
Departmental Stores		Glass Works	
Gammons	12	Woking Glass Works	50
Do-It-Yourself Suppliers, Hardware		Horticultural Engineers	
Fred G. Rice	70	Richard W. Clifton	68
The Handy Stores	38	Hotels	
Tylers of Byfleet	64	Northfleet Hotel	24
Woking Tyle Warehouse	34	House Furnishers, Carpets, etc.	
Dry Cleaners		Home Design	62
Ashley Cook	32	R. H. Taft	70
Electrical Supplies & Installations		Top Deck	26
E. T. Trotman Ltd.	46	Insurance Brokers	
Engineers		G. B. Tubbs & Co.	36
James Walker & Co. Ltd.	6	Tomson, Bull & Co. Ltd.	5
Turners of Woking	52		

Ladies' Hair Stylists

Frantine	44
Paul Graham	56

Ladies' Outfitters

Doreen	44
Philpots	14
Susan Gay	68

Leather Goods

J. H. Barrenger Ltd.	66
----------------------	------	----

Metal Merchants

Turners of Woking	52
-------------------	------	----

Newspapers & Publishers

Woking News and Mail	10
----------------------	------	----

Organ Studios

Arthur Lord Organ Studios Ltd.	18
--------------------------------	------	----

Packing Manufacturers

James Walker & Co. Ltd.	6
-------------------------	---

Photographic Supplies

Sidney Francis	24
----------------	------	----

Picture Framing

H. Shannon	78
------------	------	----

Prams & Children's Clothing, etc.

Babyland	48
----------	------	----

Provisions

W. G. Reeves	75
--------------	------	----

Public Transport

Aldershot & District Traction Co. Ltd.	16
--	------	----

Radio & Television, Sales & Service

E. T. Trotman Ltd.	46
Sports House Ltd.	2

Removals, Storage & Shipping

Cantay Overseas	40
Robertsons of Woking Ltd.	40

Restaurants

Tanduri Mahal	3
---------------	------	---

Sadler

J. H. Barrenger Ltd.	66
----------------------	------	----

Sports Equipment & Toys

Sports House Ltd.	2
-------------------	------	---

Stonemasons

English Stonemasons Co. Ltd., Purbeckston	26
---	------	----

Tobacconist (Wholesale & Retail)

Albert Pocock Ltd.	54
--------------------	------	----

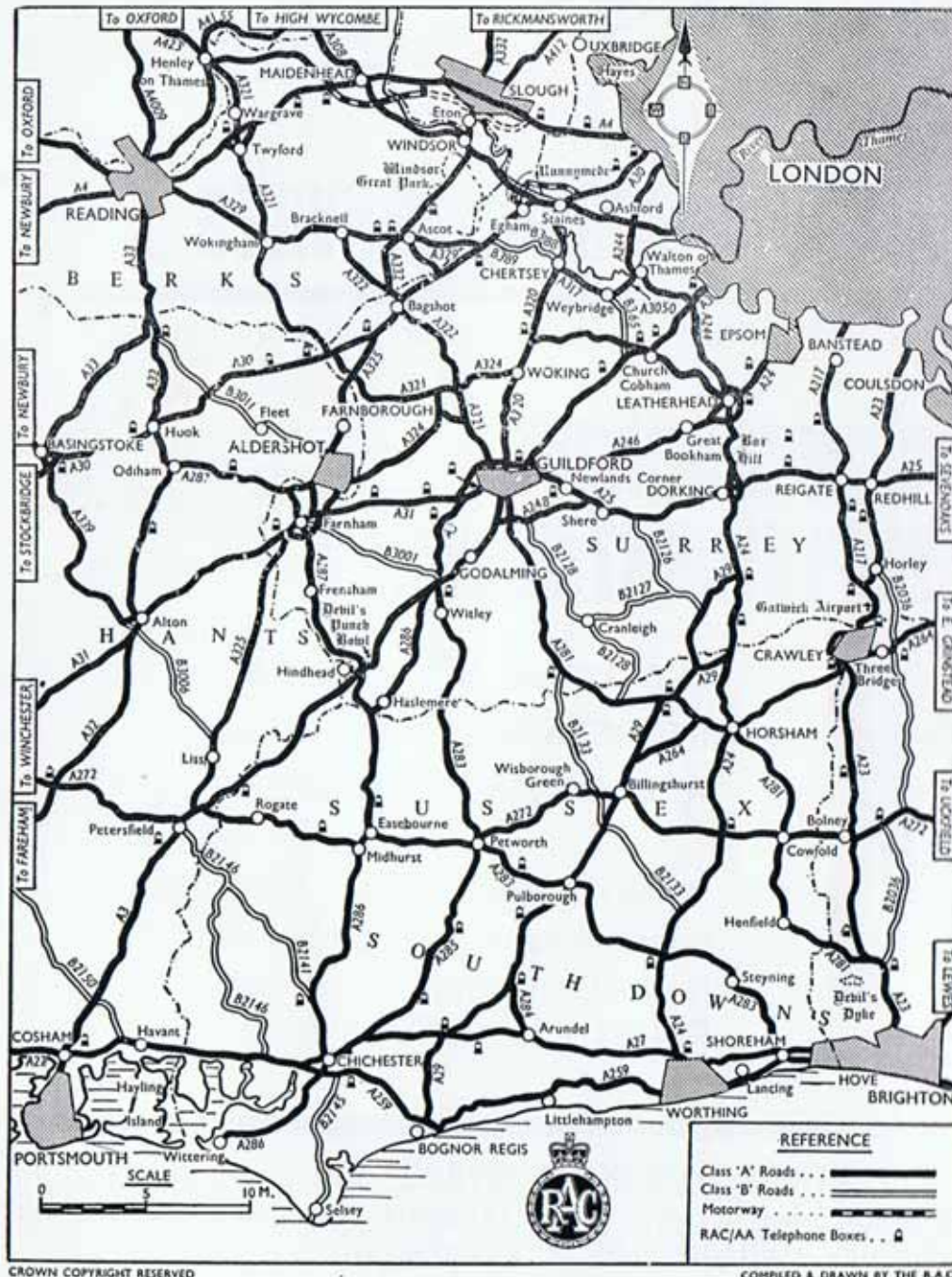
Wine & Spirit Merchants

Herbert M. Nind	30
-----------------	------	----

Wools & Needlework

Isabel Smith's Wool Shop	64
--------------------------	----





APS



ALBION PERSONNEL SERVICES

AGENCY OFFICE: ALBION HOUSE, WOKING, SURREY

COMPREHENSIVE EMPLOYMENT SERVICE

EXECUTIVE & TECHNICAL
SECRETARIAL & CLERICAL
ACCOUNTING & SALES

ALBION PERSONNEL SERVICES
guarantees a confidential and
reliable personal service to
Clients and Applicants

TELEPHONE: WOKING 67463 Night Ansafone Service
SENIOR CONSULTANT: D. G. MARSHALL, MIPM, MBIM, MITO
AGENCY MANAGER: Mrs. B. E. SHARMAN

APS Licensed annually by the Surrey County Council
