

SERVICES AND AMENITIES

Open Spaces, Parks and Recreation Grounds

Woking Park is one of the most picturesque pleasure grounds not only in Woking but in the whole county and the grounds are laid out in a particularly attractive manner.

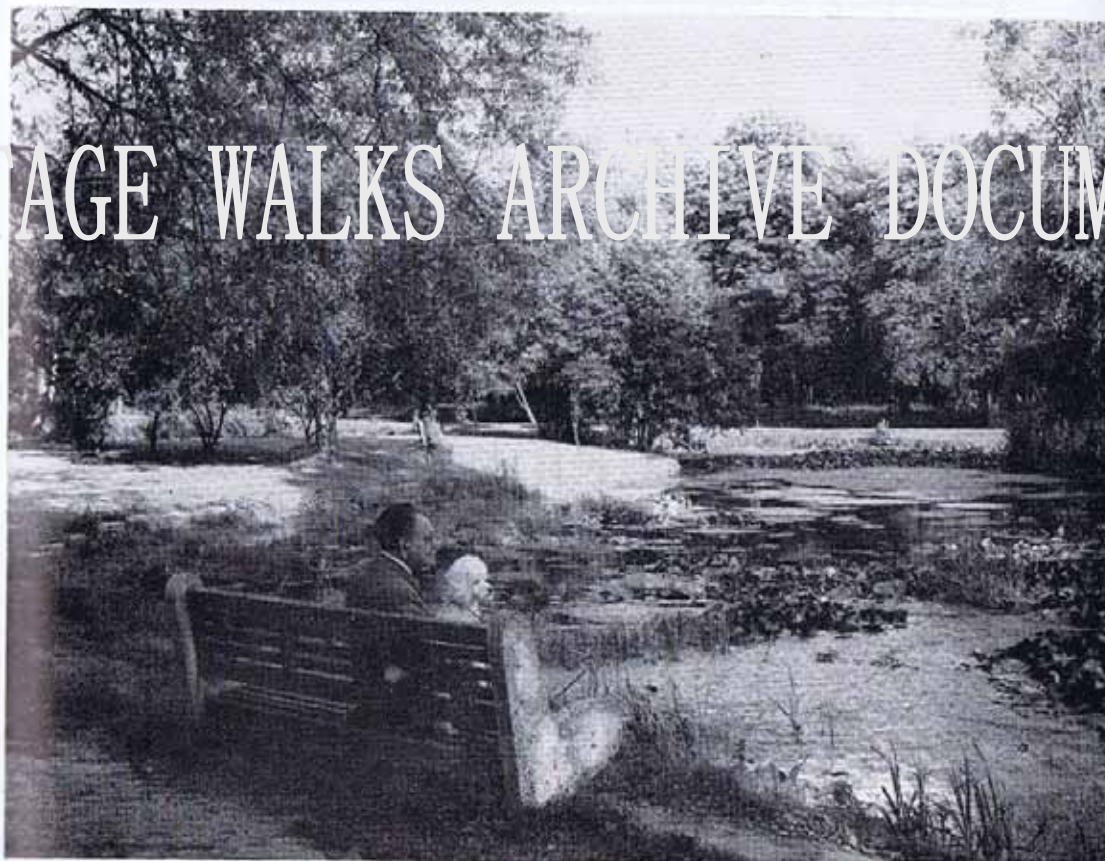
Facilities are provided for cricket, hockey, netball and tennis (hard and grass courts) and there is also an excellent bowling green and a putting course.

A corner of the Park has been set aside and suitably equipped as a children's playground.

In 1935 an open-air swimming pool was opened by His Grace the Duke of Sutherland, K.T., and has become the focal point of the amenities of the Park. The Pool is attractively designed and has been constructed to harmonise with its beautiful environment. There has since been added a children's paddling pool.

Recreation grounds are provided in various parts of the Urban District (see Classified Information).

There is an Athletic Ground with a seven-lane cinder track to international standards on the Sheerwater Recreation Ground and provision is being made for the principal field events.



Woking Park

(Photo by The County Press, Woking)

B. LEE & SONS LTD.

THE FLORISTS' OF WOKING



Member of Interflora

Flowers for all occasions

DELIVERY THROUGHOUT THE AREA

**40 & 42 CHERTSEY ROAD
WOKING**

Tel. Woking 62622 and 65936

The
Nancy
Leigh
Bookshop

Three
Chapel
Street
Woking, Surrey

Telephone
60590

“ GIVE A BOOK THIS PRESENT ”



Woking Swimming Pool

(Photo by The County Press, Woking)

HERITAGE WALKS ARCHIVE DOCUMENT

SPORT

Ample facilities are provided in the district for all kinds of sport. Provision is made for bowling, table tennis (outdoor), tennis (grass and hard courts), putting, cricket, football and hockey, archery, athletics and swimming in the various public Recreation Grounds and in Woking Park, as well as upon private grounds such as Woking, Horsell and Vickers-Armstrong's Sports Grounds.

The Woking Sports Ground at Kingfield is the headquarters of the Woking Football Club, which is a member of the Isthmian League.

There are five Golf Courses in the district (See Classified Information).

The area is famed for its Rifle Shooting facilities, the headquarters of the National Rifle Association being situated at Bisley Ranges which are on the fringe of the district at Knap-hill.

In addition, the Guardian Rifle Club has a miniature range at Kingfield.

The Woking Swimming Club has its headquarters at the Swimming Pool in Woking Park, and stages an attractive annual gala there.



REGISTERED
HOUSE-BUILDER

PINEWOOD DEVELOPMENTS CO. LTD.

Estate Developers

BUILDING CONTRACTORS

CONVERSIONS

65c GOLDSWORTH ROAD, WOKING

WOKING 60461

HERITAGE WALKS ARCHIVE DOCUMENT





Waterers Park, Knaphill

(Photo by The County Press, Woking)

The Surrey County Championship Road Relay Race is held at Woking each year.

The Woking Lawn Tennis and Croquet Club and West Byfleet Tennis Club arrange attractive tournaments on their courts and greens at Hook Heath and West Byfleet.

Abundant opportunities for riding are afforded by the open spaces surrounding Woking. This is also catered for by Riding Establishments.

For motor racing enthusiasts, the Crystal Palace, Thruxton and Silverstone Circuits are within easy reach.

The River Wey, which is navigable as far as Guildford, affords excellent opportunities for boating and fishing. Four or five miles of water, well stocked with trout, roach, perch, bream, etc., in the picturesque neighbourhood of Newark Priory, Broadmeads, Send and Runtley Wood, Sutton Green, are controlled by the Woking and District Angling Association. The Byfleet Angling Club control stretches of the Wey Navigation for fishing purposes.

The PARADE PHARMACY



FOR ALL MEDICINAL AND TOILET
REQUIREMENTS

Agents for Innox, Almay, Balenciaga, Bronnley, Kodak

7 ORIENTAL ROAD

Tel. WOKING 4571

GIL BUTLER LTD.

Craftsmen in



HOME STYLE
AND
CONTINENTAL
BAKING

Head Office: BAKERS GATE, BROOKWOOD, SURREY
Tel. Brookwood 4164

KNAPHILL Tel. Brookwood 3608

ST. JOHN'S Tel. Woking 60669

HORSELL Tel. Woking 2264

COMMERCIAL ROAD, WOKING Tel. Woking 63645
3 ROSEMOUNT PARADE, BYFLEET Tel. Byfleet 47978

MUSIC, DRAMA AND ART

Lovers of music are well catered for by the Woking Choral Society, Woking Music Club, Woking Orchestral Society and Woking Music Festival, the latter being a competitive event held annually and attracting entries from all over the county.

There are several Amateur Dramatic Societies in the district (see List of Organisations) while the larger firms in the district have their own societies.

There is an enthusiastic Society of Arts which has done much to foster the study of water-colour drawing by its annual exhibition of pictures and a Photographic Society which also holds an annual exhibition.

RAIL FACILITIES

The district is exceptionally well served by British Rail, Southern Region.

Woking Station, which is on the Portsmouth, Southampton and West of England lines of the system, is one of the most important junctions between London and the coast, and there is a frequent and convenient service of both electric and diesel trains.

For residents who travel regularly to London the facilities are particularly good, the fast trains covering the 25 miles between Woking and Waterloo in 27 minutes.

In addition to Woking there are four other stations in the Urban District, namely—Brookwood, West Byfleet, Byfleet and New Haw, and Worplesdon.

OMNIBUS FACILITIES

There is a very comprehensive omnibus service in the district which not only links up the outlying parts of the area with the town and station, but also provides regular connections with the neighbouring towns.

In addition, Green Line coaches of the London Country Bus Services Ltd., run an hourly service to London and Stevenage, while they, and the Alder Valley Services operate numerous omnibus and coach services throughout the district.

AVIATION

Fairoaks Aerodrome, Chobham, situated on the district boundary north of Horsell Common, provides facilities for private flying.



FOR THE BEST

in

CARPETS

WILTONS, AXMINSTERS,
ACRILAN, ENKALON, SISALS, etc.
CHINESE and WOOL RUGS

FURNITURE

LEADING MANUFACTURERS

LIGHTING

LARGE SELECTION

CURTAIN FABRICS

WIDE RANGE OF DRALONS, SHEERS
COTTON and SCANDINAVIAN FABRICS, etc.

GIFTS • GLASS • ENAMEL

Home Design

1-2 RYDE HOUSE
CHOBHAM ROAD
WOKING - Tel. 2700

CLASSIFIED INFORMATION

Public and Local Services

ADMINISTRATION

(prepared in April 1972)

The Woking Urban District Council governs the area, and consists of 36 members. The Urban District comprises the civil parishes of Woking, Horsell, Byfleet and Pyrford, and is divided into nine wards; each ward returning four members to the Council.

The Council Offices are in Guildford Road, Woking.

Telephone: Woking 5931—18 lines.

Council Meetings: The Council work to a 5/6-week cycle. Their meetings are held on appropriate Tuesdays at 6.30 p.m. The date of the next meeting is posted on the direction board outside the Council Offices and other dates can be obtained from the Clerk and Chief Executive of the Council.

PRINCIPAL OFFICERS

Clerk and Chief Executive and Registrar of Local Land Charges: M. Shawcross.

Director of Legal and Administrative Services: A. L. Vice, M.A., L.A.M.T.P.I.

Surveyor and Director of Technical Services: D. N. Ward, C.E., F.I.C.E., M.I.Mun.E.

Deputy Surveyor and Director of Technical Services: S. Parker, C.E., A.M.I.C.E., A.M.I.Mun.E., A.M.T.P.I.

Treasurer and Director of Financial Services and Deputy Chief Executive: A. J. Taylor, F.I.M.T.A., F.R.V.A.

Deputy Treasurer and Director of Financial Services: H. O. Luery, A.I.M.T.A.

Medical Officer of Health and Director of Health Services: Dr. P. L. Karney, M.B., B.S., D.P.H.

Deputy Medical Officer of Health: Dr. T. Lindsay.

Chief Inspector of Weights and Measures: R. E. Kilsby, M.I.W.M.A.

Local Inspector of Weights and Measures: G. Clow, M.I.W.M.A.

District Education Officer: Miss J. M. Paddon, M.A.

Chief Public Health Inspector: A. Barnett, M.A.P.H.I.

Librarian: G. R. Wells, A.L.A.

STATISTICS

Area of Urban District: 15,712 acres

Population: 76,260 (1971).

Rateable Value: £4,290,272.

General Rate: 98p in the £ (1972/3).

Early Closing Day: Monday or Wednesday.

Licensing Hours: Mondays - Thursdays—10.30 a.m. - 2.30 p.m., 5.30 p.m. - 10.30 p.m., Fridays and Saturdays—10.30 a.m. - 2.30 p.m., 5.30 p.m. - 11 p.m., Sundays—12 noon - 2 p.m., 7 p.m. - 10.30 p.m.

Market Days: Goldsworth Road: Fridays and Saturdays.

Area of Parks and Open Spaces: 1,267 acres.

Altitude: Town Centre: 124.2 feet. Climate: mild. Sub-soil: Bagshot sand.

Position: North-West Surrey.

MAIN SERVICES

Water

The district is provided with water by the Woking and District Water Company, the supply being obtained from wells at Chertsey, Clandon and Horsley and also from the River Thames.

The office of the Chief Engineer and Manager is at Guildford Road, Woking.

Gas

Gas is supplied by the South Eastern Gas Board whose local show-rooms are at 3 Guildford Road, Woking.

Standard Rate Tariff. Domestic Two-part Tariff: Available on application subject to conditions in the Board's current tariffs.

Electricity

Electricity is supplied by the South Eastern Electricity Board, whose showrooms are in Chobham Road, Woking.

Charges are as follows:

Domestic Two-Part Tariff: Fixed annual charge based on external measurements of floor area of property, plus a charge per unit for current consumed.

Allotments

The Council maintain approximately 500 allotment plots in the Urban District. Enquiries to The Treasurer, Council Offices, Woking.

Ambulance

Ambulance Stations—Walton Road, Woking.

Banks

Barclays—Chertsey Road, Woking; Byfleet; Knaphill; West Byfleet.
Lloyds—Commercial Road, Woking, Byfleet, Kingfield, Knaphill, St. John's, West Byfleet.

National Westminster—High Street, Woking, West Byfleet.

Midland—Commercial Road, Woking, Byfleet.

Trustee Savings Bank—Commercial Road, Woking.

District Bank—44 Commercial Road, Woking.

Car Parks

Car parks are provided in convenient positions near the centre of the town, whilst West Byfleet is also well served in this respect.

The main parking places are as follows: Goldsworth Road, Boundary Road (multi-storey), Sheer House (West Byfleet), Maybury Road, Heathside Crescent, Stanley Road, Station Approach (West Byfleet), Duke Street, Coronation House, Heathside Road, Brewery Road, Englefield Road (Knaphill).

Cemeteries

Brookwood Cemetery, which is known all over the world, is situated in the western part of the district. It is owned by the London Necropolis Co. Ltd., extends over an area of 360 acres and is one of the most famous and extensive cemeteries in the country, situated as it is in peaceful surroundings amidst beautiful pines.

Various London parishes and communities have their own burial ground in the Cemetery.

The military graves are in a special section of the cemetery and there are permanent war memorials to the fallen in both World Wars. The memorial to the Commonwealth soldiers who died in the 1939-1945 War and have no known graves was unveiled by Her Majesty the Queen in October, 1958.

The military section, in which national services are held annually and to which frequent visits are paid by overseas contingents, comprises the largest number of Allied military graves in the United Kingdom. The "Last Post Ceremony" was transferred here from France in 1941 and is commemorated on the first Sunday of each month by a parade.

The Muslim and Parsee sections are national centres.

Gifts of trees from Canada, Australia and New Zealand have been received and planted and, in return, oaks from Brookwood have been planted in their Service burial grounds.



Susan Gay

The fashion centre
for **ALL** ages

A WONDERFUL SELECTION OF THE BEST NAMES IN THE WORLD
OF FASHION ALWAYS IN STOCK

With the fabulous "Honey" Boutique on the first
floor—everything for the with-it Miss

"STORK CORNER" on the ground floor—for the modern
mother-to-be

56 CHERTSEY ROAD - WOKING

Telephone 2155

Opposite Multi-storey Car Park

J. H. BARRENGER LTD.

Luggage ★ Leathersgoods ★ Trunks

A wide range of HANDBAGS
(Plastic and Leather)
always in stock

BRIEF CASES
WALLETS
PURSES, ETC.

55 Commercial Road, Woking

Tel. 60715

PROMPT REPAIRS DONE IN OUR OWN WORKSHOPS
ON PREMISES

Closed All Day Wednesday



Woking Park

(Photo by The County Press, Woking)

A separate area with its own entrance has been set aside—known as the Glades of Remembrance—for the reception of cremated remains only.

Commons, Open Spaces, Parks and Recreation Grounds

The main open spaces are Bisley Common, Castle Green, Cowshott Common, Coxhill Green (part of), Horsell Common, Horsell Moor, Kingfield Green, Littlewick, Mill Moor, Prey Heath, Pyrford, St. John's Lye, Sheet's Heath, Smart's Heath, Westfield, Well Lane.

Public Parks and Recreation Grounds

Anthony Waterer (Knaphill), Brookwood, Byfleet, Queen Elizabeth Gardens, Horsell, Knaphill, Old Woking, Sheerwater, Sutton Green, West Byfleet and Woking Park.

Crematorium—Woking Crematorium in Hermitage Road, St. John's, was erected in 1885 and is the oldest in England.

Chambers of Trade—Woking and District Chamber of Trade—Hon. Sec., E. A. Radford, 1a/3a White Rose Lane, Woking; Byfleet and Pyrford Chamber of Trade—Hon. Sec., Mrs. H. Lingham, 34/35 Station Approach, West Byfleet.

Cinemas—The Odeon, Duke Street; ABC, Chobham Road.

Citizens' Advice Bureau—6a Guildford Road, Woking.

Clerk to the Justices—G. L. Whiteside, B.A., 5 High Street, Woking.

Coroner—Col. G. M. McEwan, H.M. Coroner, Woking, Surrey.

Court House—Heathside Road, Woking.

Distances—London 26 miles; Bagshot 8 miles; Guildford 7 miles; Kingston 15 miles; Staines 9 miles; Windsor 15 miles.

Education—District Education Office: Block E, Council Offices, Woking. There are two Grammar Schools, six Secondary Schools and 25 Primary Schools including three Roman Catholic Schools and one Special School in the District.

A reorganisation programme beginning in September 1973 will transform existing Primary Schools into First (5-8 years) and Middle (8-12 years) Schools, the age of transfer from Primary to Secondary education being raised from 11+ to 12+ years. The arrangements for Roman Catholic Schools will differ from the remainder, their First Schools providing for 5-9 years, Middle 9-13 years and Secondary from 13+ years.

For educational administration purposes the Urban District is an Excepted District.

There are also a number of Private Schools in the district.

Further education facilities include Evening Institute Classes for persons of all ages at Woking Technical Institute and all County Secondary Schools in the district. Full particulars of educational facilities and list of schools may be obtained from the District Education Officer, Council Offices, Woking.

Fire Station—Church Street, Woking.

Golf Courses—New Zealand; West Hill; West Byfleet; Woking; Worplesdon.

Halls—The following halls in the district are used regularly for dances, entertainments and other social functions: Brookwood Memorial Hall; Byfleet Village Hall; Horsell Parish Hall; Knaphill British Legion Hall; Lion Works Social Club; Mayford Village Hall.

★ SCHOOL WEAR FOR THE LOCAL SCHOOLS ★

Q
U
A
L
I
T
Y

A
N
D

S
E
R
V
I
C
E

THE BOYS' SHOP

SYDNEY BAILEY LTD.

21 CHOBHAM ROAD
WOKING

Telephone
65444

U
N
I
F
O
R
M
S

A
N
D

C
A
S
U
A
L
S

★ SCHOOL CLOTHES

SCHOOL CLOTHES ★

HEALTH AND WELFARE SERVICES
HEALTH DEPARTMENT, BLOCK F, COUNCIL OFFICES, WOKING
CLINICS

WOKING	Heathside Road (rear of Sharrard House)	Child Health Clinic General Medical Ante-Natal Dental Eye Clinic Speech Clinic Well Woman	Every Wednesday 2 - 4 p.m.
	Penlee, Claremont Ave.	Child Guidance Speech Dental	
BYFLEET	Methodist Hall, Rectory Lane	Child Health Clinic General Medical Dental	Every Wednesday 2 - 4 p.m.
	Village Hall, Byfleet	Geriatric Clinic	
WEST BYFLEET	Ex-Service Men's Hut, Camphill Rd.	Child Health Clinic	Every Tuesday 2 - 4 p.m.
HORSELL	The Parish Hall	Child Health Clinic	Every Friday 2 - 4 p.m.
KNAPHILL	Trinity Church Hall, Chobham Road	Child Health Clinic General Medical Ante-Natal	Every Friday 2 - 4 p.m.
WESTFIELD OLD WOKING	Community Centre, Sundridge Rd., Old Woking	Child Health Clinic Geriatric Clinic	Every Tuesday 2 - 4 p.m.
ST. JOHN'S	Health Centre, Hermitage Road	Child Health Clinic General Medical Dental Well Woman Geriatric Clinic	Every Thursday 2 - 4 p.m.
SHEERWATER	St. Michael's Hall	Child Health Clinic	Every Monday 2 - 4 p.m.
MAYBURY	Youth Centre, Alpha Road	Child Health Clinic	Every Thursday 2 - 4 p.m.
PYRFORD	The Village Hall	Child Health Clinic	Every Monday 2 - 4 p.m.
BROOKWOOD	Memorial Hall	Child Health Clinic	2nd and 4th Monday 2 - 4 p.m.
MAYFORD	The Village Hall	Child Health Clinic	1st Wednesday 2 - 4 p.m.
THE WESTGATE CENTRE	Chobham Road, Woking	Day Centre for the Elderly and Disabled Geriatric Clinic Industrial Workshop for the elderly and disabled	

All clinics, except Child Health
Clinics, are by appointment

For further details, please apply to:—

Medical Officer of Health, Council Offices, Woking. Tel. Woking 5931.

Welfare Food Services—The Welfare Foods may be obtained from any of the aforementioned Child Health Clinics or from Health Department, Council Offices, Woking.

Home Help Service—The Supervisor, Trizancia House, 74 Chertsey Road, Woking.

Hospital Services

Woking and District Victoria Hospital, Chobham Road, Woking.

Woking Geriatric Hospital, Heathside Road,

Brookwood Hospital, Knaphill.

Rowley-Bristow Orthopaedic Hospital, Pyrford.

Hotels (Licensed)

Cotteridge Hotel, Constitution Hill.

Mayford Manor Hotel, Guildford Road, Mayford.

Wheatsheaf Hotel, Chobham Road.

Red House Hotel, Chobham Road.

Cardinal Hotel, Guildford Road.

Maybury Hotel, Maybury Hill.

Star Hotel, Wych Hill.

Blue Anchor Hotel, High Road, Byfleet.

Byfleet Hotel, Station Approach, West Byfleet.

Brookwood Hotel, Connaught Road, Brookwood.

Private Hotels and Guest Houses

Crosslee Hotel, Heathside Crescent.

Crowns House Hotel, 81 Old Woking Road, West Byfleet.

Northfleet Guest House, Claremont Avenue.

Glen House Private Hotel, St. John's Hill Road, Woking.

House of Wares

IRONMONGERS



National Federation
of Ironmongers

**For all Ironmongery Needs
Hardware and Tool Dealers**

D.I.Y. MATERIALS

8 GUILDFORD ROAD - - WOKING



Winston Churchill School, St. John's

(Photo by The County Press, Woking)

HERITAGE WALKS ARCHIVE DOCUMENT



Old People's Flats at Maybury

(Photo by The County Press, Woking)

Information Bureau—Council Offices, Mount Hermon Road, Woking.

Inland Revenue, Board of—H.M. Inspector of Taxes: Commercial House, Chapel Street, Coronation House, Guildford Road, and 8/10 Commercial Road.

Libraries—Public Libraries in the Urban District are administered by the Council on behalf of the Surrey County Council.

Central Library: Commercial Road, Woking—Lending and Reference Libraries; Newspapers and Periodicals, 9.30 a.m. - 6.30 p.m. every weekday (Tel. Woking 3391).

Picture Lending: A scheme for the lending of pictures operates from the Central Library.

Branch Library: The Corner, West Byfleet—Lending Library; Reference Section; Periodicals. Monday, Thursday, Saturday, 10 a.m. - 5 p.m. Tuesday, Friday, 10 a.m. - 7 p.m. (Tel. Byfleet 43955).

Branch Library: High Street, Knaphill—Lending Library; Reference Section; Periodicals. Tuesday, Wednesday, Friday, Saturday, 10 a.m. - 1 p.m., 2 p.m. - 5 p.m.; Thursday, 10 a.m. - 1 p.m., 2 p.m. - 5 p.m., 6 p.m. - 8 p.m. (Tel. Brookwood 3394).

Branch Library: High Road, Byfleet—Lending Library; Monday, Wednesday, Saturday, 3 p.m. - 6 p.m.; Tuesday, 10 a.m. - 1 p.m.; Friday, 10 a.m. - 1 p.m., 3 p.m. - 6 p.m. (Tel. Byfleet 45274).

Ministries

Ministry of Employment and Productivity, Coronation House, Guildford Road.

Ministry of Social Security, Lynton House, Station Approach, Woking.

Ministry of Agriculture, Fisheries and Food (Forestry Commission), Danesfield, Grange Road, Horsell, Woking.

Newspapers

Surrey Advertiser, 52 Chertsey Road, Woking (Wednesday and Saturday).

Woking Herald and News, 81 Chertsey Road (Weekly).

Woking News and Mail, 52 Chertsey Road (Weekly).

Woking Review, 1 Duke Street (Monthly).

Old People's Welfare—The well-being and comfort of the old people of the district is looked after by the Old People's Welfare Sub-Committee. Enquiries to 6a Guildford Road, Woking.

The Westgate Centre, which is a Centre for the Elderly, is in Chobham Road, Woking.

Old People's Homes controlled by Surrey County Council

The Pines, Woodham Road, Horsell.

Hale End, Hook Heath Road, Woking.

Arreton House, Home for the Aged Blind, Shores Road, Horsell.

Heathfield Home for the Elderly, Coley Avenue, Woking.

Provided by Voluntary Organisations

Methodist Home for Aged Ladies, Woodbank, Hollybank Road, Hook Heath.

Church Army Sunset Home, Horsell Lodge, Woking.

Kingsbury, Coley Avenue, Woking.

Smiles Home for Invalid Ladies, Maybury Hill.

Clock House, Byfleet (Fellowship Houses Trust).

Wynberg, Oriental Road—Southern Railway Home.

Convalescent Homes

- St. Peter's Convent, Maybury Hill.
- Private Nursing Home
Nuffield Nursing Homes Trust, Shores Road.
- Private Nursing Homes for the Elderly
Blackdown House, Old Woking Road.
- Mayhurst (Woking) Elderly People's Home, 9 Mayhurst Avenue,
Tamerton, Brooklyn Road.

Omnibus Services—The following are some of the main omnibus services and their routes.

- London Country Bus Services Ltd.
Walton via New Haw, Addlestone and Weybridge.
- Ripley via Old Woking and Send.
- Staines via Addlestone and Chertsey.
- Guildford via Old Woking, Send, Burnt Common and Burpham.
- Guildford via Old Woking, Send, Burnt Common, Clandon, West Clandon and Merrow.
- Green Line Service
Stevenage via Walton, Kingston, Richmond and Hyde Park Corner.
- Alder Valley Services
Guildford via Horsell, Knaphill, Brookwood, Pirbright and Worplesdon.
- Guildford via Kingfield Green, Mayford and Stoke.
- Cove via Knaphill, Bagshot and Camberley.
- Chertsey via Ottershaw.
- Aldershot via St. John's, Knaphill, Brookwood, Blackdown and Frimley Green.
- Sunningdale via Chobham and Windlesham.

There are also express services to the coast and places of interest during the summer months.

Organisations

There are approximately 200 organisations in the district embracing Art, Music, Drama, Sport, Horticulture, Philanthropic, Photographic, Political, Pre-Service, Service and Ex-Service, Townswomen's Guilds, Women's Institutes, Youth Clubs and Community Associations, a full list of which may be obtained on application to the Clerk and Chief Executive, Council Offices, Woking.

Parliamentary Constituency of Woking

- Urban District of Woking, and Rural District of Guildford (part).
- Member: Cranley Onslow, Esq., M.P., Chobham Park House, Chobham, Surrey.
- Deputy Electoral Registration Officer: M. Shawcross, Council Offices, Woking.

Postal and Telephone Services

- Postal Facilities
Head Post Office: Commercial Road, Woking.
- Sorting Office: White Rose Lane, Woking.
(Sorting and Distributing Office for all mail consigned to Dorset, Hampshire and the Isle of Wight).
- Telephone Services
London (S.W.) and Guildford Areas
Exchanges at Woking, Byfleet, Worplesdon and Brookwood.
A separate Telephone Directory for the whole of the district is issued by the Post Office.

Public Control Department

- 116 Goldsworth Road, Woking



Commonwealth Memorial, Brookwood

(Photo by The County Press, Woking)

Registration of Births, Marriages and Deaths

Sharrard House, Heathside Road, Woking.

Schools (See Education, page 67).

Slipper Baths

The Baths are situated temporarily in Boundary Lane, Woking.

Hours of Opening: Men and Women—Thursday and Friday 2.30 - 8 p.m.

Valuation Office

North-West Surrey Area.

Guildford Area Office: Cavridy House, Ladymead, Guildford.

Welfare Services (See Health and Welfare Services, page 68).

Weights and Measures Office—116 Goldsworth Road, Woking.

Woking Council of Social Service—6a Guildford Road, Woking.

Women's Royal Voluntary Service—14 York Road, Woking.

Youth Employment Bureau—Lismore, Heathside Road, Woking.

Youth Service—Woking Service of Youth Council, District Youth Officer, Education Department, Council Offices, Woking.

Swimming Pool

Woking Park. Open from early May to mid-September. Mixed bathing (pool or sunbathing).

A charge is made for admission. Season and monthly tickets available. Full particulars at Swimming Pool or Council Offices.

Hours of opening: Monday to Friday 12.30 p.m. - 8 p.m.; Saturdays, Sundays and Bank Holidays, 10.30 a.m. - 7.30 p.m.

During School August Holidays—Monday to Friday 10.30 a.m. - 8 p.m. A Free Car Park is provided.

PLACES OF WORSHIP

The district is well supplied with places of worship as the following list will show.

Church of England

All Saints', Woodham Lane,
Woodham.
All Souls', New Lane, Sutton
Green.
Christ Church, Church Street.
Church of the Good Shepherd,
Pyrford.
Church attached to Brookwood
Hospital, Knaphill.
Emmanuel Mission Church,
Saunders Lane.
Holy Trinity, Chobham Road,
Knaphill.
St. Andrew's Mission Church,
Russell Road, Horsell.
St. John the Baptist, Church
Road, St. John's.
St. John's, West Byfleet.
St. Mary of Bethany,
Mount Hermon/York Roads.
St. Mary's, Rectory Lane,
Byfleet.
St. Mary's, Church Hill, Horsell.
St. Michael's, St. Michael's Road,
Sheerwater.
St. Nicholas, Church Hill,
Pyrford.
St. Paul's, Oriental Road.
St. Saviour's, Connaught Road,
Brookwood.
St. Thomas's Mission Church,
Littlewick, Horsell.
Woking Parish Church
(S. Peter's), Church Street,
Old Woking.
St. Mark,
Westfield Road,

Free Churches:—

Congregational

Station Road, West Byfleet.
York Road, Woking.

Methodist

Connaught Road, Brookwood.
Rectory Lane, Byfleet.
The Broadway, Knaphill.
Devonshire Avenue,
Sheerwater.
Brewery Road, Woking.

Baptist

Anthony's, Horsell,
Kingfield (High Street, Old
Woking).
Percy Street.

Strict Baptist

Cheapside, Horsell.
Lower Knaphill.
Westfield Road, Mayford.

Plymouth Brethren

Marlborough Road.
Portugal Road,
West Byfleet.

Salvation Army

Church Street.
Binfield Road, Byfleet.

Mission Halls

Courtenay Mission, Walton
Road.

Manor Road, Horsell.

Station Road, West Byfleet.

Presbyterian Church of England

St. Andrew's, White Rose
Lane.

Roman Catholic

Our Lady Help of Christians,
Madeira Road, West Byfleet.
Our Lady Mother of God,
Kingfield Road.
St. Dunstan's, White Rose
Lane.
St. Edward's, Sutton Park.
St. Hugh's, Victoria Road,
Knaphill.
St. John the Evangelist,
Dartmouth Avenue,
Sheerwater.

Church of Christ

Hope Chapel, High Street,
Knaphill.

First Church of Christ, Scientist

Heathside Road, Woking.

The Society of Friends (Quakers)

Meetings on Sundays,
41 Park Road, Woking

Muslim

Shah Jehan Mosque, Oriental
Road.

POLICE

Chief Superintendent: Police Station, Heathside Road, Woking.

The Chapel,
St. Columba's
Retreat Home

(Photo by
The County Press,
Woking)



HERITAGE WALKS ARCHIVE DOCUMENT

DATSUNs 100AS

DATSUNs 1200S

1608S

DATSUNs 1800S

240C

DATSUN's 240Z

**OLD WOKING SERVICE
STATION LTD.**

WOKING
61725

HIGH STREET • OLD WOKING • SURREY

INKERMAN CAR & CARAVAN CO.

Agents for

Sprite - Eccles - Fairholme - Mardon - Astral

SALE - SERVICE - SELF TOW HIRE - ACCESSORIES

TOURING CARAVAN SPECIALISTS

Car Agents for

FORD - AUSTIN - NSU - AUDI

Tel. Brookwood 4324

ST. JOHN'S, WOKING

Phipps Autos Ltd.

**STANDARD TRIUMPH AND CHRYSLER
RETAIL DEALERS**

REPAIRS

SALES

SERVICE

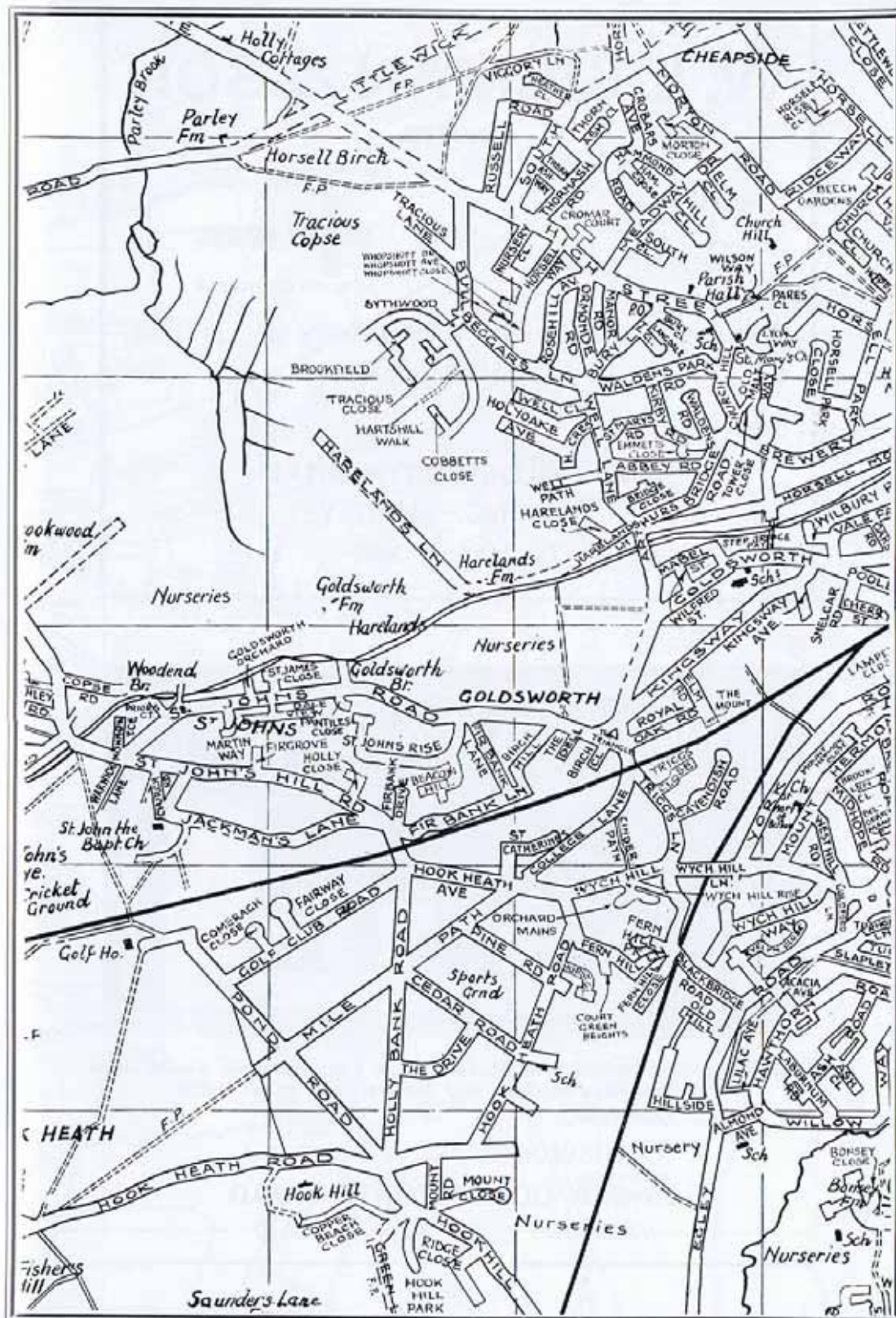
**CORNER GARAGE, ST. JOHN'S
WOKING, SURREY**

Phone: Woking 3464



**ANY
MAKE
OF CAR
SUPPLIED**

ST. JOHN'S AND DISTRICT



GOLDSWORTH ROAD

W. L. SIRMAN & SON LIMITED

Electrical
Contractor

National Inspection Council for
Electrical Installation Contracting



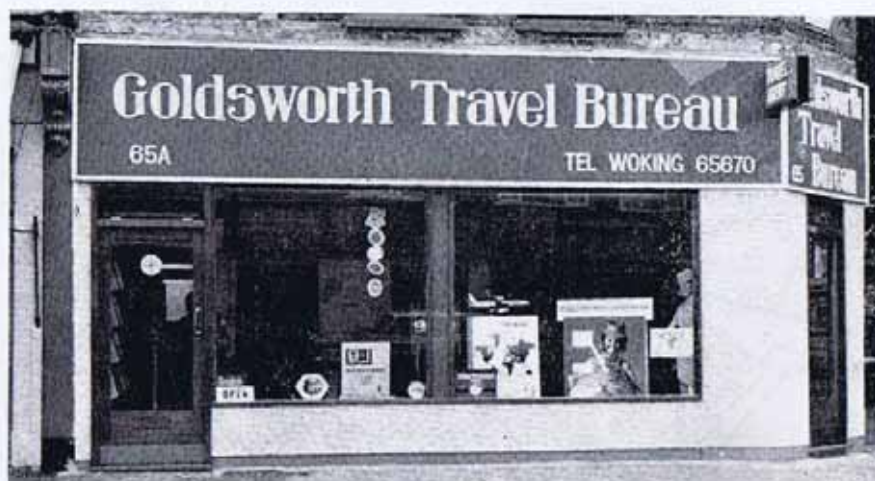
APPROVED CONTRACTOR

Complete Installations and Repairs of Lighting,
Heating and Power

Office and Showroom

**145 GOLDSWORTH ROAD
WOKING, SURREY**

Tel. Woking 3652



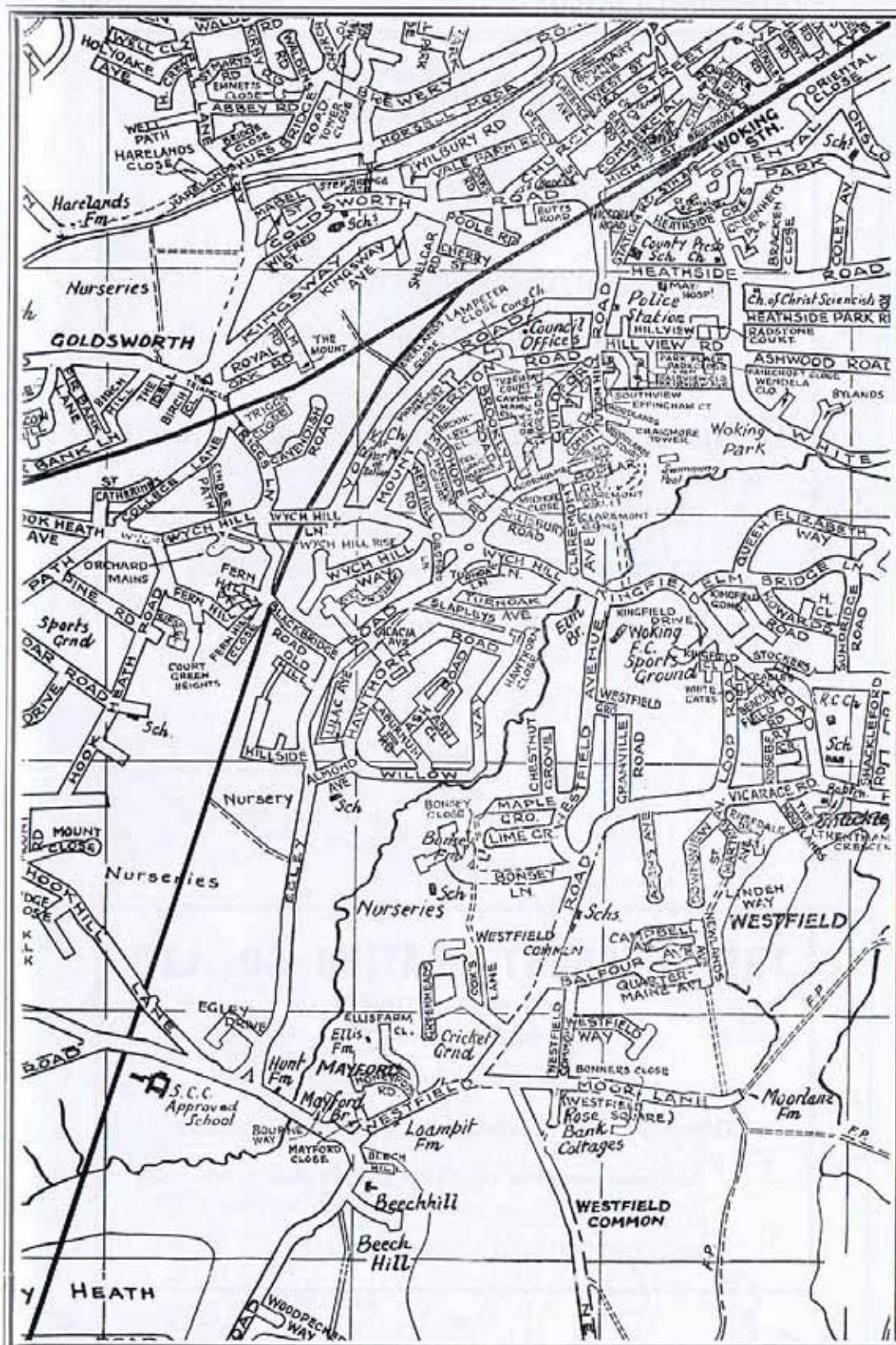
**AGENTS for all principal Tour Operators, Car Ferry Services, Cruise Lines
and Main Sea Routes, and Air Services to all parts**

Call, write or telephone:

**GOLDSWORTH TRAVEL BUREAU
65-65A GOLDSWORTH ROAD
WOKING - Tel. Woking 65670**

HERITAGE WALKS ARCHIVE DOCUMENT

GOLDSWORTH ROAD



GOLDSWORTH ROAD

F. L. JAMES LTD.

General Ironmongers

for

GARDEN TOOLS - FERTILIZERS - ETC.
TOOLS AND DOMESTIC HARDWARE

Paint and Wallpaper Department

Tel. Woking 62977

73-75 GOLDSWORTH ROAD, WOKING

HERITAGE WALKS  ARCHIVE DOCUMENT

THE CRESCENT HEATING CO. LTD.

162 HIGH STREET
OLD WOKING

Telephone: Woking 2817

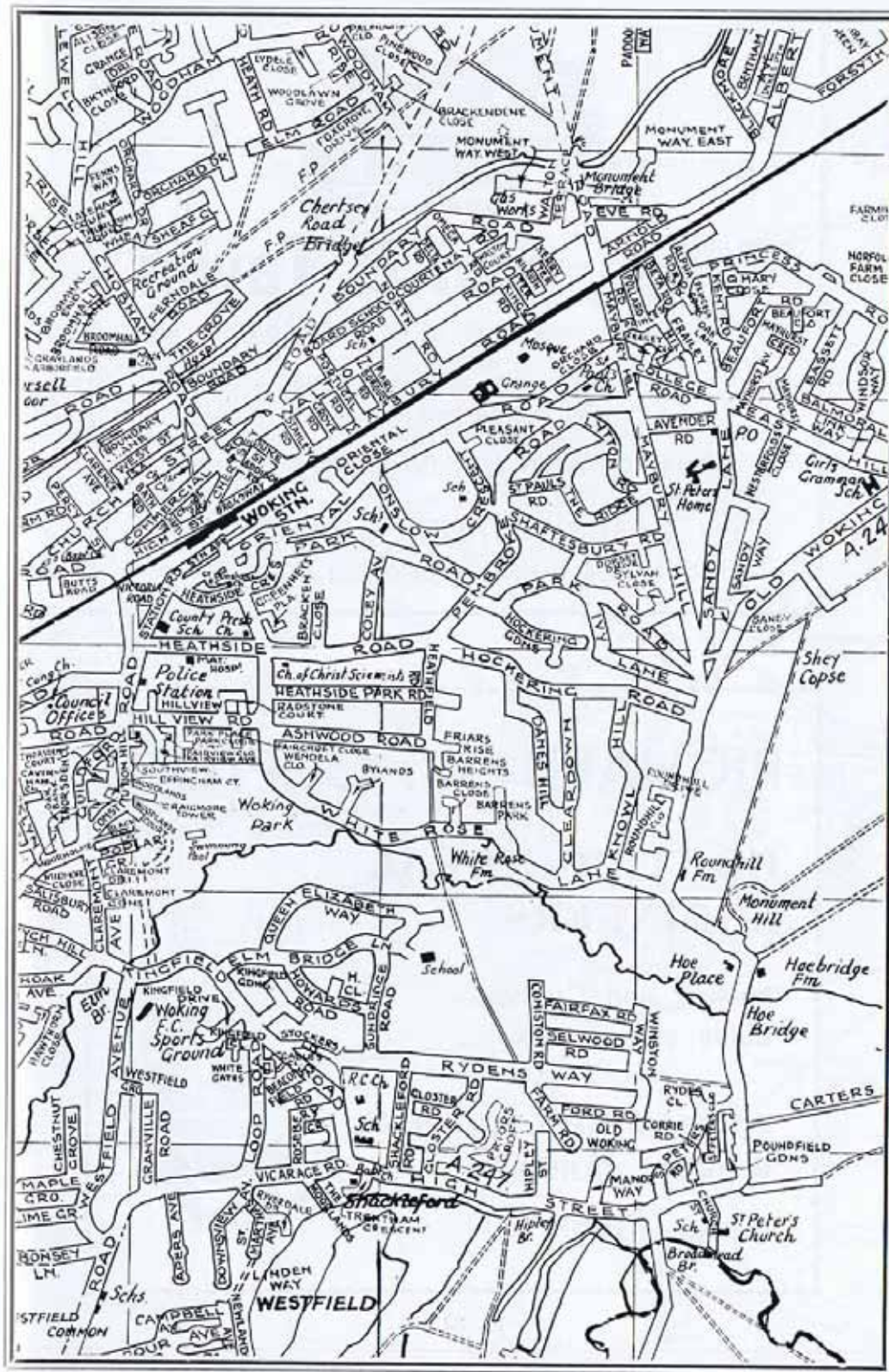
Domestic and Commercial Heating Engineers

Approved installers to: South Eastern Gas Board
North Thames Gas Board

REGISTERED CORGI INSTALLER

HERITAGE WALKS ARCHIVE DOCUMENT

WOKING



KNAPHILL



Green, Son & Taylor

Incorporating A. W. H. GREEN & SON

Auctioneers, Estate Agents,
Surveyors and Valuers

Rents Collected

Properties Managed

34 HIGH STREET, KNAPHILL

Tel. Brookwood 3808 and 4145

RICHARD W. CLIFTON

HORTICULTURAL ENGINEERS

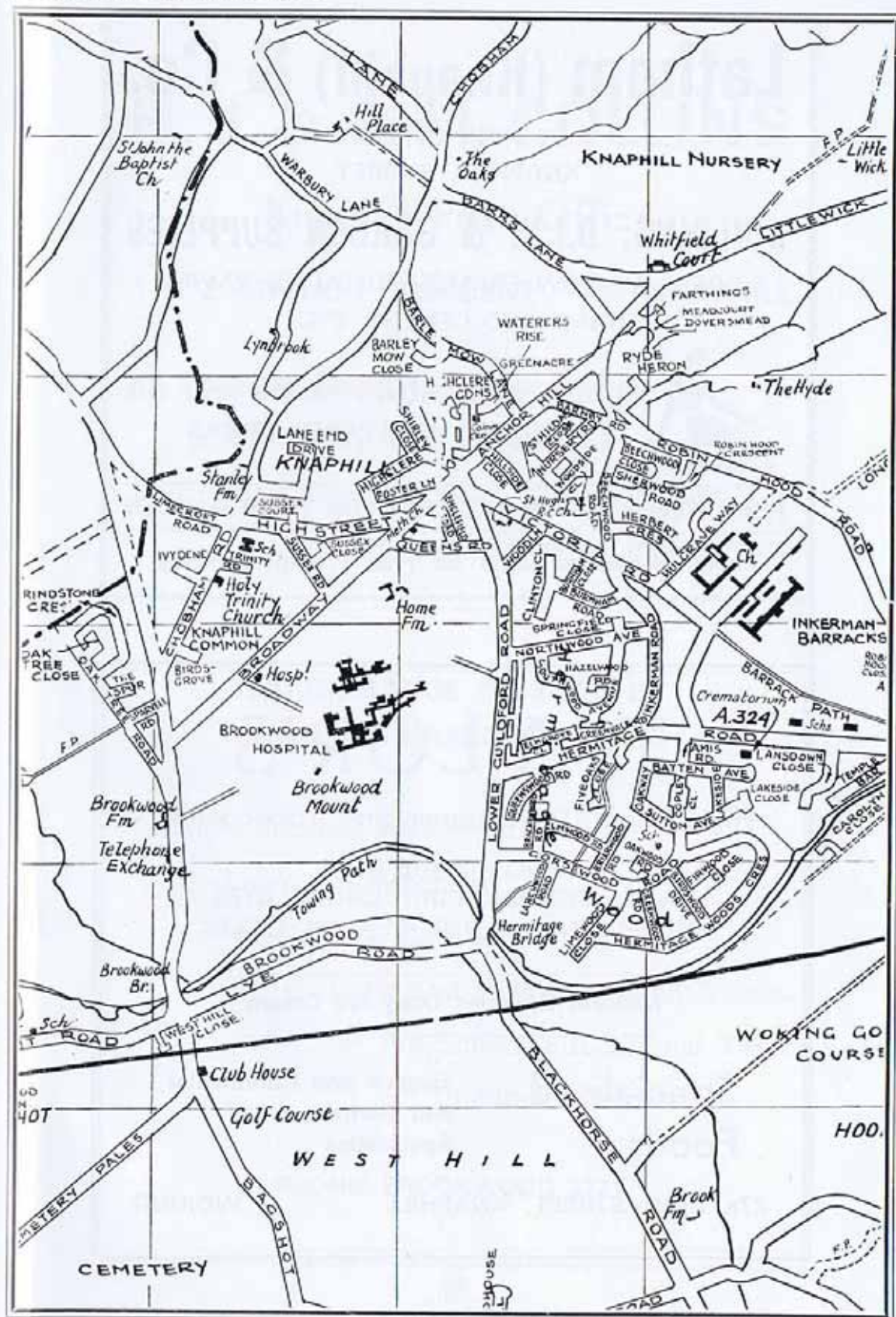
Mower and Cultivator
Sales and Service

7 HIGH STREET, KNAPHILL
WOKING, SURREY

Brookwood 2977/8



KNAPHILL AND DISTRICT



KNAPHILL

Latham (Knaphill) & Co.

35 HIGH STREET
KNAPHILL, SURREY

BUILDING, D.I.Y. & GARDEN SUPPLIES

DOORS, WINDOW FRAMES COLOURED PAVING
SAND AND CEMENT, ETC.



DULUX AND CROWN PAINTS AND THE
LATEST WALLPAPER BOOKS

PEAT, SEEDS AND FERTILIZERS FOR YOUR GARDEN

Phone Brookwold 2060 for Free Prompt Delivery

TAYLOR'S

High Class Confectioner and Tobacconist

FULL RANGE OF
LINDT AND SUCHARD CHOCOLATES
FULLER AND OLIVER GURDEN CAKES

Midland Counties Dairy Ice Cream

**Specialised
Foods**

Eastern and Continental
and German Bread
Specialities

27a HIGH STREET, KNAPHILL

- WOKING

H. J. & E. M. COLLINS

Knaphill Post Office

1 & 2 ANCHOR CRESCENT - KNAPHILL

- ☆ Greeting Cards for all occasions
 - ☆ Stationery and Paperbacks
 - ☆ Pens by Parker and Platignum
 - ☆ Maps and Drawing Instruments
-

LARGE RANGE OF TOYS BY LEADING MANUFACTURERS

- ☆ Airfix Models and Paints
- ☆ Lego and Meccano
- ☆ Spear's Games
- ☆ Corgi and Tonka Cars and Trucks
- ☆ Pre-School Educational Toys
- ☆ Children's Books

PHONE: BROOKWOOD 3273

KNAPHILL

Griffiths

Tel. Brookwood 3357

of KNAPHILL
25 THE BROADWAY

**Men's and Boys'
Clothing - Outfitting - Footwear**

HAND CUT TAILORING

**COMPLETE BOY'S OUTFITTERS
TO LOCAL SCHOOLS**

**The
Schoolgirl**

Tel. Brookwood 5051

1 HIGH STREET
KNAPHILL

**COMPLETE GIRLS' OUTFITTERS
TO LOCAL SCHOOLS**

Lowest possible prices consistent with
good value!

KNAPHILL

Why not consult personally ?

FRANTINE

continental hair stylists

Specialising in Latest Products
and Methods

Open Friday until 7 p.m. All Day Saturday

25 HIGH STREET

KNAPHILL, WOKING, SURREY

TELEPHONE BROOKWOOD 1923



Hoover Sales

Hoover Service

If you have Hoover products — you need us

If you want Hoover products — you need us

R.S.M. SERVICE CO.

Authorised Hoover Service Centre

2 ANCHOR CRESCENT, HIGH STREET

KNAPHILL, WOKING

Telephone: Brookwood 5000

★ Buy from where you can get After Sales Service ★

KNAPHILL

For your convenience
it's easy to park on the spot at

KNAPHILL TRAVEL

Anchor Crescent, Knaphill

Being A.B.T.A. members, we are agents for all the
principal tour companies and travel services



Our qualified staff are always on hand on
Brookwood 6867

**patricia
traser**



**THE little SHOP
WITH THE BIG STOCK**

of Fashions for all ages

25 HIGH STREET, KNAPHILL

Telephone: Brookwood 2766



KNAPHILL



National Federation
of Ironmongers

FRED G. RICE

(Proprietor: W. Harker)

General and Furnishing Ironmonger

KNAPHILL Tel. Brookwood 2103

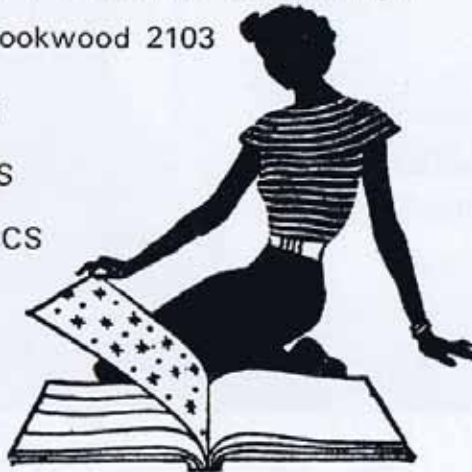
CHINA and GLASS

LAMPS and STOVES

BRUSHES and PLASTICS

GARDEN and
TRADE TOOLS

PAINTS and
WALLPAPERS



LADIES FASHIONS

BRENDA MAY

☆ COATS

☆ SKIRTS

☆ DRESSES

☆ SLACKS

☆ TROUSER SUITS

☆ KNITWEAR

Lingerie, Nightwear, Tights, etc.

Leading Brands in Knitting Wools

23 BROADWAY - KNAPHILL

Brookwood 3367

WEST BYFLEET



Crown's House Hotel

81 OLD WOKING ROAD

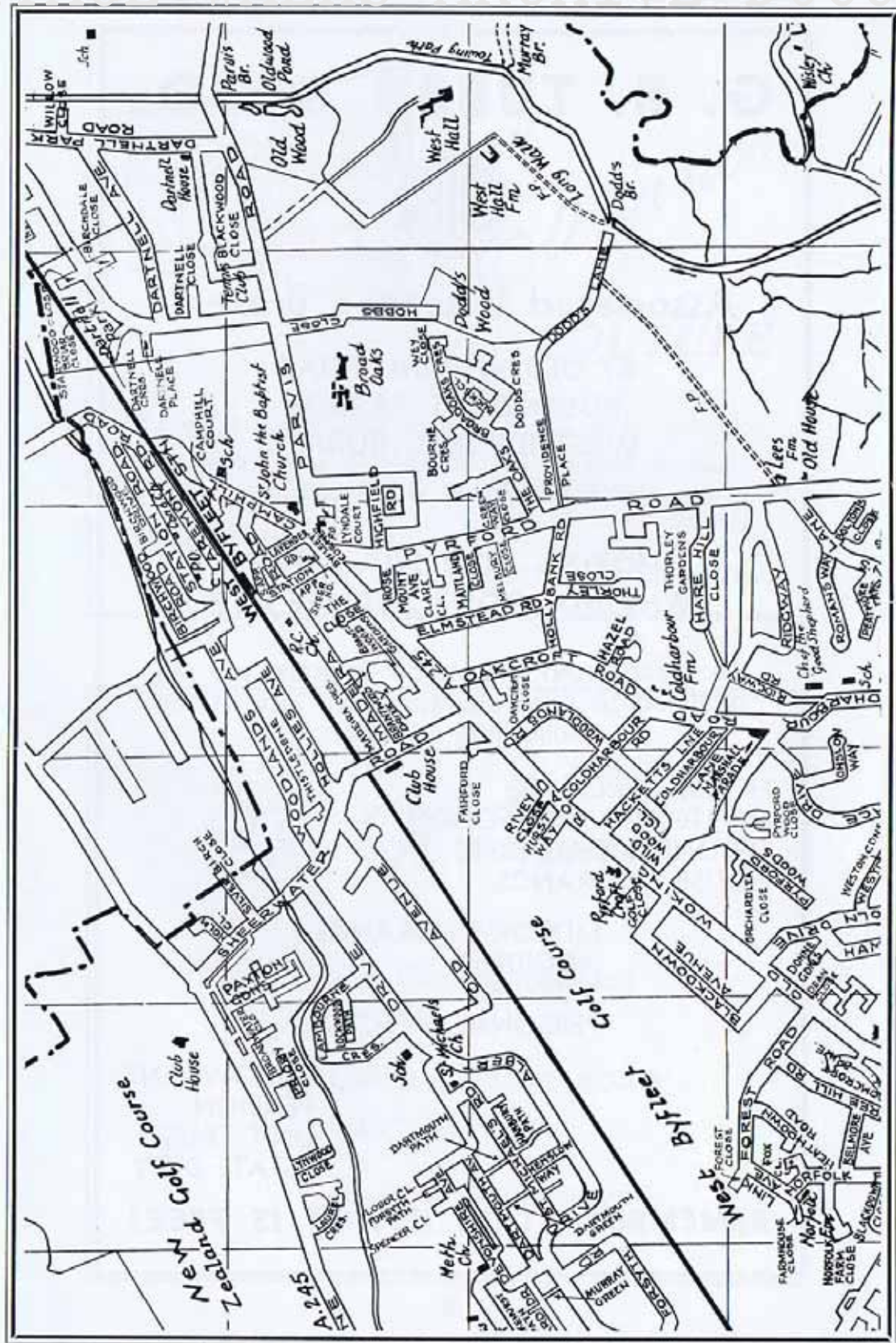
Telephone Byfleet 44431

Situated adjacent to the shopping area, Crown's House Hotel is small but very comfortable, offering an extensive menu and wine list in the Restaurant, which is open to Non-Residents.

The Proprietor, Mr. Crown, has had many years of Catering experience, and specialises in functions in Clients homes, also Marquees and Halls.

West Byfleet Station is on the main line to London and is within three minutes walk from the Hotel.

LARGE CAR PARK



WEST BYFLEET

G. B. TUBBS & CO.



Associated Insurance Brokers

67 OLD WOKING ROAD
ROSEMOUNT PARADE
WEST BYFLEET, SURREY
BYFLEET 44466 and 49333/4

MOVING INTO THE AREA? WHY NOT COME AND SEE US?

As Associated Insurance Brokers we are
qualified to offer assistance in any of the
following matters:

HOUSE PURCHASE
MORTGAGE PROTECTION
SECOND MORTGAGES
HOUSE INSURANCE

MOTOR INSURANCE
ACCIDENT
SICKNESS
PERSONAL EFFECTS

ENDOWMENT
PENSION
UNIT TRUST
ESTATE DUTY

REMEMBER — OUR ADVICE IS FREE!

WEST BYFLEET

G. B. TUBBS & CO.



Associated Insurance Brokers

67 OLD WOKING ROAD
ROSEMOUNT PARADE
WEST BYFLEET, SURREY

BYFLEET 44466 and 49333/4

MOVING INTO THE AREA? WHY NOT COME AND SEE US?

As Associated Insurance Brokers we are
qualified to offer assistance in any of the
following matters:

HOUSE PURCHASE
MORTGAGE PROTECTION
SECOND MORTGAGES
HOUSE INSURANCE

MOTOR INSURANCE
ACCIDENT
SICKNESS
PERSONAL EFFECTS

ENDOWMENT
PENSION
UNIT TRUST
ESTATE DUTY

REMEMBER — OUR ADVICE IS FREE!

WEST BYFLEET

BOUCHER SERVICES

WEST BYFLEET

STAFF AGENCY

Permanent and Temporary Staff

COMMERCIAL SERVICES

Typing, Duplicating, Translations

SECRETARIAL SCHOOL

Tutorials in Shorthand, Typewriting,
Audio Typing, Pitmanscript
(Start any time)

Boucher Home and Office Services Ltd.

15 Station Approach, West Byfleet

Telephone: Byfleet 45523 (Evenings: Byfleet 43034)

Licensed annually by the Surrey County Council

PYRFORD TYRES

NEW and REMOULDS



Large stock of Quality
Discount Tyres

PYRFORD ROAD - WEST BYFLEET

Tel. Byfleet 42126

WEST BYFLEET



Weddings and
Floral Tributes
a Speciality

Bruton & Son

**GREENGROCERS
AND FLORISTS**

Teleflower and Mail Fruit
Services
Carter Seeds and Sundries

**31 STATION APPROACH
WEST BYFLEET**

Tel. Byfleet 43381



Orders delivered

TYLERS of BYFLEET **(Ironmongers) LTD**



National Federation
of Ironmongers

GARDEN REQUISITES
DO-IT-YOURSELF SUPPLIES
TOOLS - STEPS
WALLPAPER - PAINT
HARDWARE
KEY-CUTTING SERVICE

**18 STATION APPROACH
WEST BYFLEET, SURREY**

Telephone: Byfleet 45178



BYFLEET

Wright & Hollis

Motor Engineers and
Mobile Workshop

**CAR MAINTENANCE SPECIALISTS
ON-THE-SPOT REPAIRS**

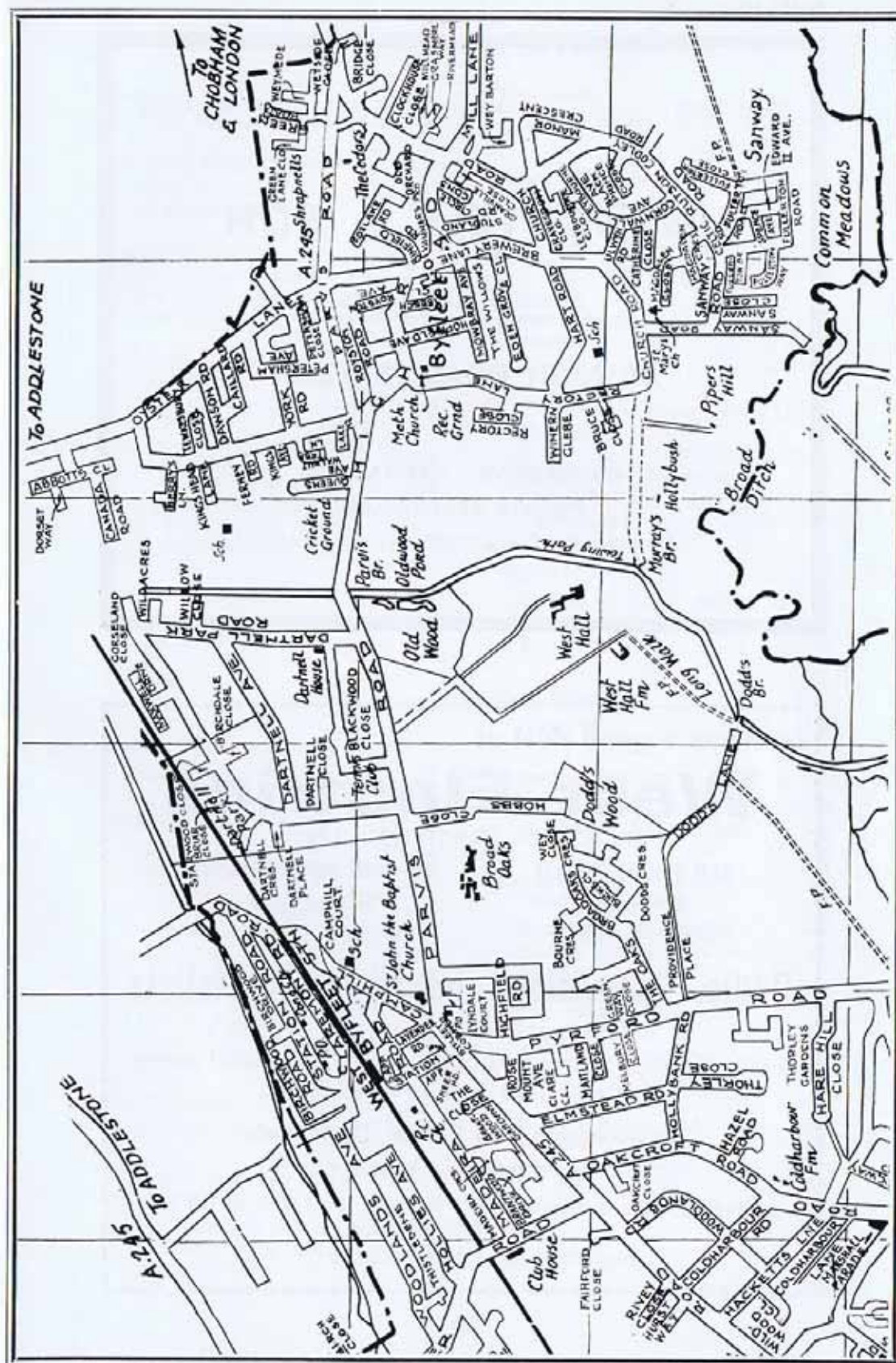
Complete Overhaulage
and Testing



**4 VANNERS PARADE, HIGH ROAD
BYFLEET**

Tel. Byfleet 47923

BY FLEET



BYFLEET

Estd. 1880

Phones: BYFLEET 45037 and 47289

G. BOUTELL & SON

Funeral Directors

50 HIGH ROAD, BYFLEET

CREMATIONS EMBALMING

PRIVATE REST CHAPEL

FUNERALS CONDUCTED TO ALL PARTS

Always a good deal at

West Electrics

K. A. BECK (ELECTRICAL) LTD.

150 HIGH ROAD

BYFLEET

Byfleet 41874

15 THE BROADWAY

NEW HAW

Byfleet 43082

Radio, Television and Hi-Fi Specialists

Agents for

Bush, Murphy, Ultra, Ferguson, H.M.V., Decca, Hoover,
Westclox and Smiths Clocks, etc.

Monochrome and Colour TV Rentals

SAME DAY T.V. SERVICE

★ Buying Plans for all products from £1 to £1,000. Up to four
years to pay

NO DEPOSIT REQUIRED

INDEX TO ADVERTISERS

Antiques		
Wych House Antiques ...	38	
Bakers & Confectioners		
Taylor's	84	
Gil Butler Ltd.	60	
Booksellers		
The Berean Bookshop ...	28	
The Nancy Leigh Bookshop	56	
Builders & Decorators, Heating, etc.		
Gilbert Ash Ltd.	18	
H. Mullins	4	
Pinewood Developments Co. Ltd.	58	
R. Pain & Sons Ltd.	26	
Robert Kirby Ltd.	28	
S. & J. Brown (Builders) Ltd.	24	
Caravan Agents		
Inkerman Car and Caravan Co.	76	
Chemists		
The Parade Pharmacy ...	60	
Coach Operators		
Alder Valley Services ...	8	
Departmental Stores		
Gammons	12	
Robinsons (Woking) Ltd. ...	46	
Do-It-Yourself Suppliers, Hardware		
Fred G. Rice	89	
F. L. James Ltd.	80	
House of Wares	69	
Latham (Knaphill) & Co. ...	84	
Tylers of Byfleet	95	
Woking Tile Warehouse ...	34	
Dry Cleaners		
Ashley Cook	32	
Electrical Supplies & Installations		
E. T. Trotman Ltd.	50	
G. Duder Gray Ltd.	53	
West Electric's	98	
W. L. Sirman & Son Ltd. ...	78	
Engineers		
James Walker & Co. Ltd. ...	6	
Employment & Staff Bureaux		
Boucher Services	94	
Broadway Staff Agency ...	54	
Personnel Selection Associates	2	
Estate Agents, Auctioneers, Surveyors, etc.		
Athertons	Street Plan	
Chancellors & Co.	Outside Back Cover	
Gascoigne-Pees	Inside Front Cover	
Green, Son & Taylor	82	
Mann & Co.	1	
Thorntons	Street Plan	
Florist		
B. Lee & Sons Ltd.	56	
Bruton & Son	95	
Eve French	4	
Fuel Merchants		
Newlands	48	
Funeral Directors		
G. Boutell & Son	98	
H. Ingram & Sons Ltd. ...	20	
Garages, Sales & Service, Petrol & Tyres		
Boorman's of Woking	36	
Horsell Service Station ...	28	
Leigh's Service Garage Ltd.	44	
Old Woking Service Station Ltd.	75	
Onslow Motors	40	
Sheerwater Motors Ltd. ...	42	
Star Hill Garage	42	
Phipps Autos Ltd.	76	
Pyrford Tyres	94	
Wadham Stringer (Woking) Ltd.	23	
Wright & Hollis	96	
Garden Centre		
Jackmans of Woking	44	