

HERITAGE WALKS ARCHIVE DOCUMENT

WOKING

G.P. Gascoigne-Pees

estate agents

auctioneers

valuers

surveyors

land and commercial

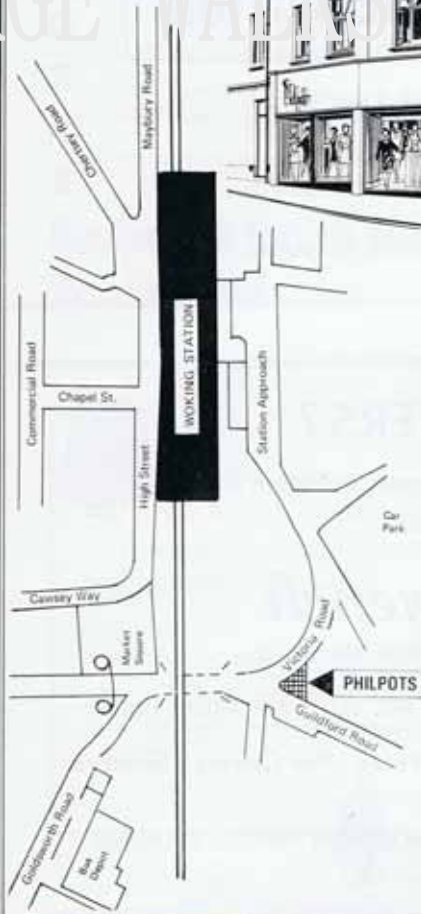
management specialists

AGENTS TO THE COUNTY

ADDLESTONE	ALTON	ASH VALE	CAMBERLEY	CARSHALTON	
COULSDON	CUCKFIELD	DORKING	EPSOM	ESHER	EWELL
FARNBOROUGH	FARNHAM	GUILDFORD	LEATHERHEAD		
MERROW	NORTH CHEAM	PURLEY	REIGATE	SURBITON	
SUTTON	TEDDINGTON	TOLWORTH	WALTON-ON-THAMES		
	WEST BYFLEET	WEYBRIDGE	WOKING		

67 Commercial Way, Woking 5566-7-8

Woking's Fashion Landmark



Shop in comfort
Personal attention
Budget Accounts available
Large selection in fashions

Dresses, Suits, Trouser Suits, Coats, Jackets,
 Rainwear, After Six and Long Evening Wear,
 Blouses, Knitwear, Slacks, Skirts, Beach and
 Swimwear

Philpots

1 GUILDFORD ROAD, WOKING
 Telephone: Woking 62351

P
E
R
M
A
N
E
N
T

MALE AND FEMALE STAFF

ADMINISTRATIVE, PROFESSIONAL
AND TECHNICAL

PERSONNEL SELECTION

(Principals: R. H. & M. G. Plowright, M.I.E.C.)

5 CHURCH PATH
Telephone WOKING 65544-5

A Brochure is available on request

T
E
M
P
O
R
A
R
Y

SENDING FLOWERS?

For the freshest flowers and largest selection
of tropical house plants in this area . . .



Eve French

(Constance Spry Diploma)

WE DELIVER TO WOKING AND ALL OUTLYING AREAS DAILY

Wedding Flowers a Speciality - Vases - Pot Covers - Glassware

3 CENTRAL BUILDINGS, CHOBHAM ROAD, WOKING

Tel. Woking 4987



Oxy Travel (U.K.) Ltd.

World Wide Travel Agents

56a CHERTSEY ROAD, WOKING, SURREY GU21 5BG

Telephone Woking 64554

Telex 859589

**Contact us for all your Travel
Arrangements, including Business**

LAND — SEA — AIR

We hold details at your request of the NEW ABTA HOLIDAY PROTECTION SCHEME which GUARANTEES your holiday in the event of any failure of LICENSED TOUR COMPANIES who carry the ABTA symbol.

For the business man we can obtain your visas, Sterling Travellers Cheques can be issued while you wait, and Dollar Travellers Cheques and currency can be ordered with a little notice.



***London Theatre Booking Agency
Arranged on the spot***



Doves- for that little extra care.

and that little extra care can be found at any one of our branches
whether it be for the sale of new or quality used cars, servicing,
self-drive hire, parts and financing

**distributors of Triumph & Rover cars
Jaguar dealers**

Guildford Road, Woking

White Rose Lane, Woking

Telephone: Woking 4515



DESIGN AND INSTALLATION
OF
AIR CONDITIONING
AND
MECHANICAL SERVICES
BY

**A. SMITH & SONS
(HEATING) LTD.**

Head Office:

CHERTSEY ROAD, WOKING, SURREY

Woking 4156/7/8/9

12 ORCHARD STREET, CRAWLEY, SUSSEX

Crawley 23248

Barbers Picture Framing

77 Chertsey Road, Woking, Surrey GU2 5BH

Telephone: Woking 69926

FRAMING
WASHLINE, OVAL and
CUT MOUNTS
DRY MOUNTING



HEAT SEALING
ORIGINAL PAINTINGS
PRINTS
HAND TEXTURED PRINTS

OVAL, SWEPT and CIRCLE FRAMES

ALL FRAMING DONE ON THE PREMISES

OIL, WATER, COLOUR AND PRINT RESTORATION

BARBERS

(Fine Art) AUCTIONS

Frequent sales by Auction include fine quality furniture, silver, porcelain, bronze, etc.

Specialist sales of books, paintings and prints

6 WALTON ROAD, WOKING

Tel. Woking 63562

THE STAR HOTEL

(Fully Licensed)

STAR HILL - WOKING

Telephone: Woking 60526

ACCOMMODATION

BED & BREAKFAST

CENTRAL HEATING AND HOT AND COLD IN ALL BEDROOMS

AMPLE PARKING SPACE

☆ Certificate issued by the Fire Authority

Farnham Carpet Co. Ltd.

THE CARPET SPECIALISTS for courtesy, friendly
advice with personal service



- ★ ESTIMATES AND FITTING FREE
- ★ 7/10 days delivery service from stock
- ★ Confidential credit terms available

18 High Street, Woking, Surrey

Telephone 61768

FASHIONS

for the younger man

SHIRTS

SUITS

KNITWEAR

TROUSERS

"BRUMMEL"

4 Chapel Street, Woking

Telephone 63893

DAKS

DRIWAY

TERN

VAN HEUSEN

HUGH HARRIS

(Tailors) Ltd.

Men's Wear
Specialists

SHOES
by
CHURCH

GRENSONS

TRICKERS
and
SLIPPERS

13 HIGH STREET, WOKING

Telephone 61063

TOMSON, BULL & CO. LTD.

Incorporated Insurance Brokers

Represented at Lloyds

**15A and 16 THE BROADWAY, WOKING, SURREY
GU21 5AY**

Telephone: Woking 4097-8

ALL FORMS OF INSURANCE ARRANGED INCLUDING LIFE, UNIT TRUST
LINKED CONTRACTS, PENSIONS, MOTOR, HOUSEHOLDERS, SHOP-
KEEPERS COMBINED, PERSONAL ACCIDENT AND SICKNESS, ETC.

SPECIALISTS IN DEEP FREEZE CONTENTS INSURANCE FOR THE
HOME AND TRADE. SCHEMES ARRANGED TO REQUIREMENTS OF
MANUFACTURERS OR WHOLESALERS

LOCAL AGENTS BRIDGWATER BUILDING SOCIETY

PERSONAL SERVICE - COMPETITIVE RATES

ALL INSURANCES PLACED WITH BRITISH INSURANCE ASSOCIATION
OFFICES OR AT LLOYDS

WOKING GLASS WORKS

27 NORTH ROAD, WOKING

GLAZING CONTRACTORS

DOUBLE GLAZING

Factory Sealed and D.I.Y.

Mirrors

Louvre Windows, Patio Doors

Glass all types cut to size

Mirror-flex and mirror tiles

Shop front plate glass replacement service

Leaded Lights, Paint, Tools

WOKING 73100

SHOWROOM AND D.I.Y. SHOP: 2 COURTENAY ROAD, WOKING

For all Removals

LOCAL, LONG DISTANCE AND OVERSEAS

STORAGE

*

Robertsons of Woking Ltd.

NORTH ROAD - WOKING

Telephone: Woking 66841 or 60692

BIG DISCOUNTS

PLUS FRIENDLY ADVICE PLUS SERVICE

All Main Agencies

Free Film Service

THE LOCAL SHOP THAT COMPETES

HARPERS PHOTOGRAPHIC

71 COMMERCIAL WAY

WOKING 61061

BROADWAY STAFF AGENCY

7 THE BROADWAY
WOKING 66123/65866

Always a wide selection of vacancies in this area for PROFESSIONAL,
ADMINISTRATIVE, TECHNICAL, SECRETARIAL and CLERICAL STAFF

Male and Female

Full- and Part-time

Hours: Monday to Friday, 9 a.m. to 5.30 p.m.

Saturday 9.30 a.m. to 12.30 p.m.

Evening appointments by arrangement

By special arrangements interviews can be arranged at our offices

LONDON VACANCIES THROUGH
OUR ASSOCIATE OFFICES

NO FEES TO
APPLICANTS

COMPETENT, PERSONAL SERVICE GUARANTEED



POOLSERVE LTD

WINSTON HOUSE

**62 HERMITAGE ROAD, ST. JOHN'S, WOKING
SURREY GU21 1TZ**

Telephone: Woking 73982

Specialists in:

- | | |
|--|--|
| A Swimming Pool
Maintenance and
Repairs to Plant | E Chemical Supplies
(Free Delivery) |
| B Contract Servicing | F Construction of Liner Pools |
| C Heating all types | G Construction of Reinforced
Concrete Pools |
| D Filtration all types | H Renovation of existing Pools |

Quality Bodywork to leading Transport Operators

Designed and constructed to meet your individual products in

Luton or Box Bodies
Dropside or Platform Bodies
Bulkflower or Plant Bodies. Insulated, fitted with
Thermostat Heat
Horse or Cattle Bodies. Optional 'Percroft' easy
Demount System
Trailers—Boxes or Platforms
Demount Bodies
Conversion of Vans into High Tops

Main Agents for Clark Equipment Bodies, also Refrigeration Bodies
Specialists in all types of Body Repairs

PERCROFT MOTORS LIMITED

MAYBURY ROAD, WOKING, SURREY
70202 – 70205

Also by our Associated Company:

TIPPERS AND LOAD LUGGERS
SPARES AND REPAIR SERVICE

Agents for Edbro, Anthony Carrimore and Telehoist

WOKING TIPPING GEAR LIMITED

MAYBURY ROAD, WOKING, SURREY
70202 – 70205

**FREEZE ALL THE YEAR—AND
SAVE MONEY DOING IT**

All your Freezer Needs and Family
Economy Pack Groceries
are available at

THE ICEPACK

ANCHOR HILL, KNAPHILL
Brookwood 6028

and

VILLAGE WAY, YATELEY
Yateley 872949



**TRAVEL
AGENTS**

Going Places

Holiday Travel
Business or Pleasure
Journeys by Rail, Sea, Air or Coach
Theatre Journeys



Call us and let us arrange it for you

KNAPHILL TRAVEL

ANCHOR CRESCENT, KNAPHILL
Brookwood 6867

Members of A.B.T.A.

Hallmark
Associates

(Computer
Services)
Limited

Hallmark House
10 St Johns Rd
Woking
Surrey
GU21 1SE

Telephone
Woking
04862 64611

Woking's Computer Bureau offers a full range of bureau services

- ☆ CONSULTANCY
- ☆ SYSTEMS DESIGN
- ☆ PROGRAMMING
- ☆ DATA PREPARATION
- ☆ DATA PROCESSING

Specialists in Production Planning and Control Systems for the Manufacturing Industry

REES MAINTENANCE

LIMITED



REES
GROUP

HIGH STREET, WOKING

Tel. Woking 62225

Come to us for Repairs and Maintenance of your
Commercial Vehicles and Contractors' Plant



Our modern workshops are fully equipped to handle any type
of Commercial Vehicle and Contractors' Plant, from a minor
repair to a major overhaul

Bosch Fuel Injection Service Agents for Surrey



SIGN MAKERS

Coach Painters Sign Writers
Display Makers

MONUMENT WAY, WOKING, SURREY

WOKING 73156

YOUR CAREER

with the James Walker Organisation

We are a truly international Group of Companies specialising in the technology of fluid sealing for all types of industry.

Our Head Office and main Works are situated at Maybury, Woking, and there are other factories at Hoe Bridge, Old Woking, St. John's, Chertsey and Cockermouth in Cumbria. Production from these Works and from our factories in the U.S.A. and Australia is backed by 29 offices throughout the U.K., by James Walker Companies in Australia, Belgium, France, Holland, Ireland, Italy, New Zealand, Spain and the U.S.A., and by Agencies situated in every major industrial and marine centre throughout the world.

To maintain this position we need people of all ages to train to carry on the efficient and smooth running of our Organisation. The diversity of manufacturing and marketing from start to finish requires an equally wide variety of skills and training is given to all.

Excellent opportunities exist for young people to study for higher educational qualifications, and there are many social activities. Whether you have 'A' levels, 'O' levels, or none at all, come along to see our Personnel Manager, for we may have the opportunity you are seeking.



JAMES WALKER & CO. LTD.

LION WORKS - WOKING, SURREY GU22 8AP

Tel.: Woking 5951. Telex: 859221. Grams: Lioncelle Woking Telex

WOKING



The
OFFICIAL GUIDE
and
DIRECTORY
of
SERVICES

PUBLISHED FOR THE COUNCIL BY
G. W. MAY LTD.
94 WIGMORE STREET
LONDON, W1H 0BR

(Contents Copyright)

The publishers and Woking Borough Council acknowledge with thanks the many fine photographs reproduced in this guide: Allan Marshal of London, W4., The County Press, Woking, Noel Antliff, Woking, and Aero Films Ltd., Boreham Wood.



ALDER VALLEY

A National Bus Company

***Private Hire Coaches
for all occasions***

Quotations without obligation

Tickets obtained

Meals arranged

Our Representative will be happy to call
to discuss your requirements

Please write or call in for our comprehensive leaflet of excursions we operate
during the Summer months from the Woking area

For full information please apply to the Company's Office:

GOLDSWORTH ROAD, WOKING

Telephone: Woking 63619

or

Private Hire Department, Mr. F. Barker,

HALIMOTE ROAD, ALDERSHOT

Telephone: Aldershot 23322

CONTENTS

EASY TO REACH	21
THE RIGHT PLACE TO LIVE	25
WOKING'S NEW CENTRE	31
A GREAT FUTURE	37
WOKING AT PLAY	41
AROUND AND ABOUT	57
INDUSTRY	65
THE DISTRICTS OF WOKING	69
OLD WOKING	73
HOE PLACE	73
HORSELL	73
KNAPHILL	77
BROOKWOOD	77
PYRFORD	79
WISLEY	81
BYFLEET	85
SUTTON PLACE	89
THE COAT OF ARMS OF WOKING	89
CLASSIFIED INFORMATION AND GUIDE TO SERVICES	91
INDEX TO ADVERTISERS	134
STREET PLANS					
WEST BYFLEET AND DISTRICT	111
KNAPHILL AND DISTRICT	119
ST. JOHNS AND DISTRICT	127
GOLDSWORTH AND DISTRICT	133

HUGH BUTCHER LTD.

WOKING MAIN DEALERS

SCHREIBER FURNITURE

LIDEN-CHARTA 'HOMEWORTHY'

Whitewood First Floor Showrooms

Telephone Woking 63684 for Free Catalogue

Woking New

BEDDING CENTRE

★ THE LARGEST DISPLAY OF BEDS ☆

For Prompt Delivery in the District

SLUMBERLAND - REST ASSURED

Stop Press: CHINA AND GLASS DEPARTMENT NOW OPEN

DISCOUNT FURNITURE STORE

No Deposit Terms

Provident Vouchers Welcomed

11 and 17 THE BROADWAY - - WOKING

BUS AND RAIL LINK

EASY TO REACH

Woking's natural situation is ideal—far enough out of London not to be tangled up with suburbia yet near enough in to be within half an hour's reach. Close to London Airport, within easy reach of the South Coast and astride main routes to the far South-West as well as to cross routes that lead up to the Midlands. Few places are so well sited as Woking and few places are so well endowed with road, rail and air links.

BY RAIL

It was the coming of the railway that made modern Woking and it is the railway that still serves it best today with a modern station in the very heart of town and with stations, too, serving Byfleet and Brookwood—and services (with only a few exceptions) are by the very latest electric trains of the Southern Region. Services, simply, are:—

- (a) Six trains every hour to and from London's Waterloo station (with two serving Brookwood (for Knaphill), West Byfleet and Byfleet). Four of these trains are expresses and nip through to town in just under half an hour. The service is greatly increased at peak hours with trains every few minutes.
- (b) Two trains every hour for all stations to Basingstoke with one of these services running on through as an all-stops train to Southampton and Bournemouth. There is also an hourly express from Woking to Bournemouth with main stops at Winchester and Southampton. These trains take one hour to Southampton and 100 minutes to Bournemouth.
- (c) Two trains every hour to Aldershot, Farnham and Alton.
- (d) Two trains every hour to Guildford, Haslemere and Portsmouth—one all stations and one an express that gets down to Portsmouth (for the Isle of Wight ferry service) in an hour and a quarter.
- (e) Expresses every other hour to Salisbury and main stations through to Exeter St. Davids. These are the only trains nowadays through Woking that are not electric—but diesel-hauled rolling stock is thoroughly modern. Connections can be made at Exeter for stations right through to Penzance.

Details of all rail services from Woking Station. Tel. 65251.

BY ROAD

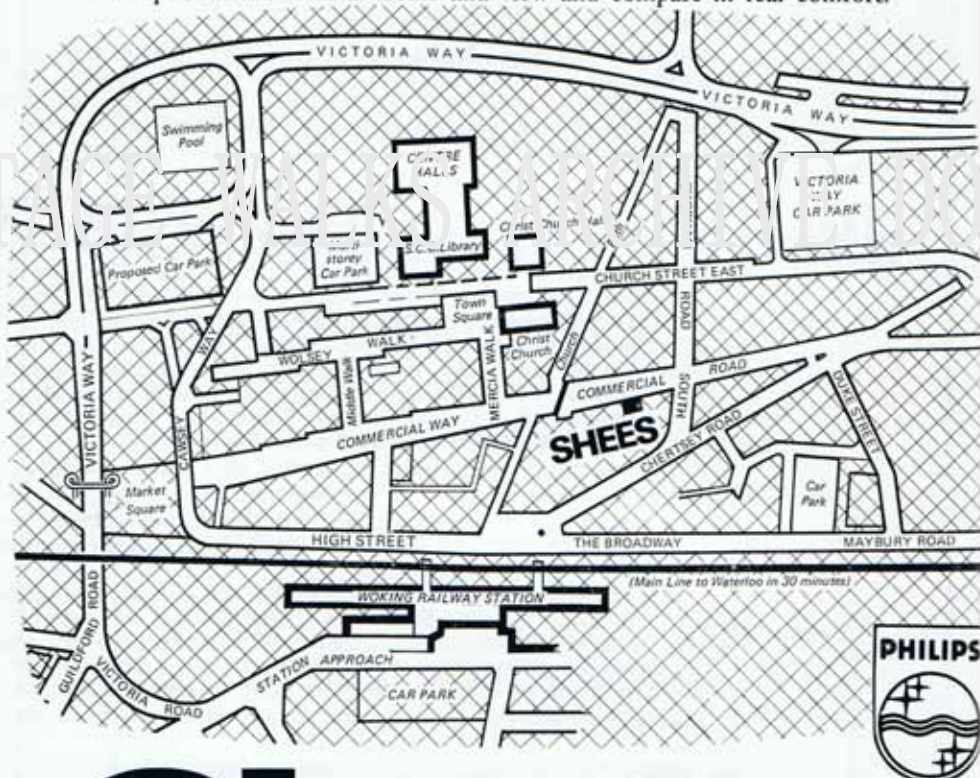
The M3, which now cleaves its way across the countryside between Woking and Bracknell, provides easy driving to the heart of London almost as quickly as the fast trains (only the reckless and feckless would try to do it in even faster times!). In the opposite direction the motorway gives easy journeys down to the Hampshire coast and, here again, driving is absurdly easy.

In the field of road transport, Woking—whose main bus and coach stops are close to the railway station—offers routes by three distinct sections of the National Bus Company.

Green Line Coach 716A runs every hour via Kingston to London and on to Hatfield and Stevenage. These express coaches reach Central London (Baker Street) in just two hours.

FIND YOUR WAY AROUND WOKING —
to SHEES, Woking's colour television specialists!

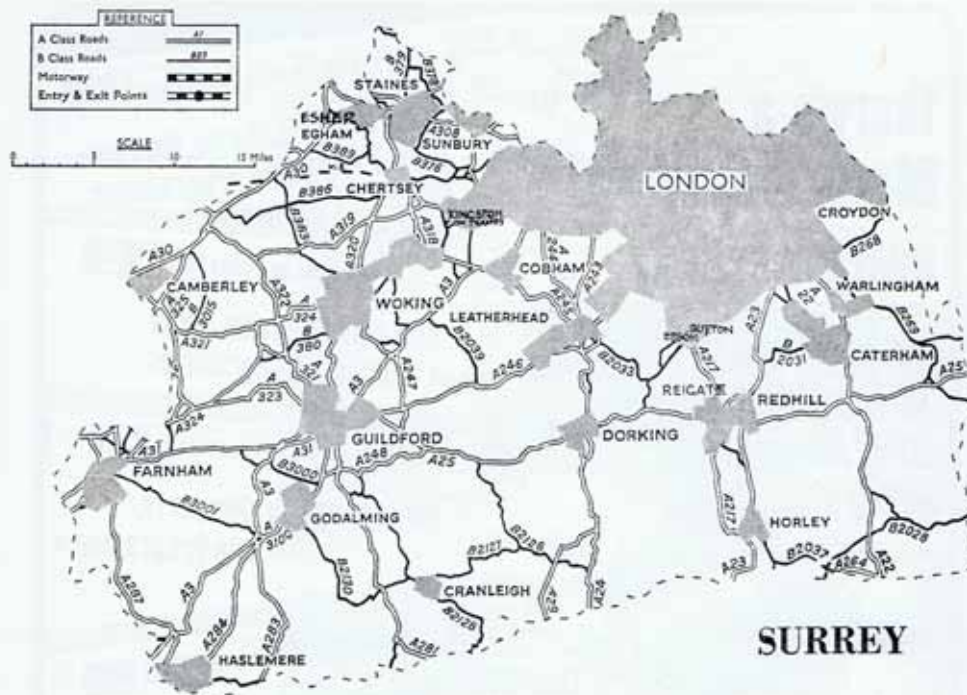
46 Commercial Road, Woking, is easy enough to find on this map. That's the home of SHEES, the specialists in colour television for sale or rental. Make an early visit to these fine showrooms and let our helpful, expert staff tell you why our colour sets, our prices and terms and our service are unsurpassed in this area. Come and view and compare in real comfort.



WE ARE YOUR PHILIPS COLOUR TV SPECIALIST IN THIS AREA

SHEES

46 COMMERCIAL ROAD, WOKING Telephone 65555



London Country buses provide Woking's 'in town' services linking shopping centre with suburbs on the eastern, southern and northern edges. Regular services, too, run to such places as Chertsey, Ripley, Guildford, Weybridge, Staines and Walton-on-Thames.

Alder Valley buses run from Woking centre to its western suburbs and also to Chertsey, Aldershot, Bagshot, Camberley, Sunningdale and Guildford.

Details of Alder Valley Services from their office at Goldsworth Road. Tel. 63619. For London Country and Green Line services the nearest information point is at Commercial Road, Guildford. Tel. Guildford 75735.

BY AIR

London Airport is reasonably close to Woking—by the M3 for drivers or by direct coach from Woking Station. These latter coaches run every hour and take 45 minutes, schedules connecting with main line trains. Details from Woking Station. Tel. 65251.

There's a News & Mail every weekday

the NEWS & MAIL has
joined with the Surrey
Daily Advertiser to
bring you...



Monday

Surrey Daily Advertiser and **News & Mail**
Local News, Features, Bargains,
Cars, T.V. & Radio Programmes,
Children's Corner

Tuesday

Surrey Daily Advertiser and **News & Mail**
Small-Ad Bargains, Jobs,
T.V. & Radio Programmes

Wednesday

Surrey Daily Advertiser and **News & Mail**
More Bargains, Property,
Jobs, T.V. & Radio Programmes

Thursday

Woking News & Mail & **Surrey Daily Advertiser**
Your own NEWS & MAIL
of course!

Friday

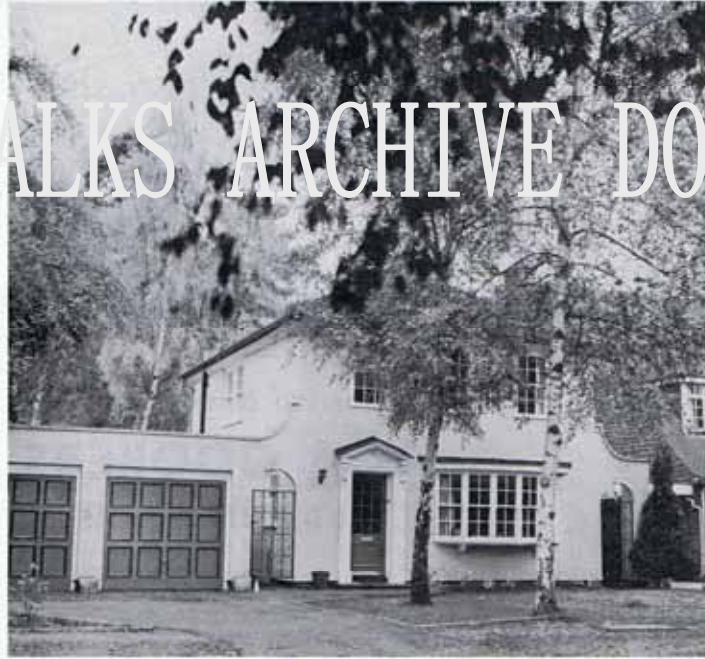
Surrey Daily Advertiser and **News & Mail**
2,000 Small-Ads, County & local
News and Features, T.V. &
Radio Programmes

**Ask for the Surrey Daily Advertiser
and News & Mail every weekday**

THE RIGHT PLACE TO LIVE

There is little doubt that the coming of the railway in the early 19th century was the one event that put Woking 'on the map'. Right from the start the train service was frequent and the time to and from London was progressively reduced. New businesses soon arrived, shops and inns were built and houses sprang up to accommodate the influx of new residents.

One of the leading local figures in this early development was Walter Charles Slocock. He saw the potential in what was then barren common land at Hook Heath. He purchased this land and developed it, first to increase his nursery supplies of trees and shrubs, but went on to create here one of the most exclusive residential areas in Woking, an area that became as well known as St. George's Hill at Weybridge or Wentworth at Sunningdale.



Architect planned housing, a feature of the many fully landscaped and tree lined avenues throughout the borough.

Through the years as Woking has developed as a commercial centre so has its housing progress kept pace. A wide range of properties is to be found in the town and its suburbs with variety as the keynote. Houses available range from neat two bedroom Victorian cottages at Horsell to a vast range of three to four bedroomed detached and semi-detached properties of post and pre-war dates in every part of town.

R. PAIN & SONS LTD

Established 1890

Builders - Decorators

Heating and Sanitary Engineers

**REPAIRS TO PROPERTY A SPECIALITY
PLUMBING, DECORATING AND TILING
TO A HIGH STANDARD**



HEATING BY OIL, GAS OR SOLID FUEL

POTTERTON Approved Installers

AUTHORISED DISTRIBUTORS FOR

**AGA COOKERS
AND HUMIDIFIERS**

Showroom and Offices:

**10 - 14 CHERRY STREET
WOKING**

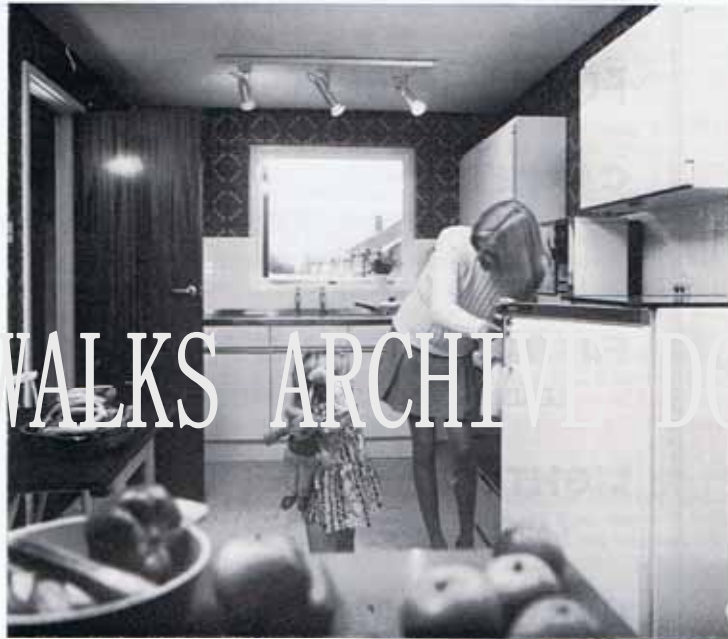
GU21 1EE

Telephone: Woking 61846 (3 lines)

ANSAFONE SERVICE

HERITAGE WALKS ARCHIVE DOCUMENT

A typical kitchen
in one of Woking's
several attractive
new housing schemes.



At the higher-priced end of the scale are architect-designed detached houses at the Hockerling Estate and Hook Heath, houses with six to eight bedrooms, servants' quarters and grounds of up to two acres. Needless to say, the prices are as great in range as the properties themselves. Very little is available below the £12,000 mark but a great many houses still change hands at not so much more than that figure. In the higher price range the sky is almost the limit with modern four bedroom detached houses in and around the £30,000 figure and some of Hook Heath's small 'mansions' fetching a great deal more.

In the sphere of new housing there is also a wide variety available. Several smaller developments, many of flats and terraced houses, are taking place in the centre of Woking whilst, in the outer areas, small estates of mainly three and four bedroom houses and flats are being carefully dovetailed into the surrounding matured residential landscape. Very handsome four to five bedroom detached houses with double garages are being built in small individualistic groups in the Grange Road area amid the tree-lined thoroughfares east of Woking station. Fine Georgian-style five bedroom residences are also being built at West Byfleet set in small culs-de-sac amid mature trees.

FOR THE BEST in

CARPETS

WILTONS, AXMINSTERS, ACRILAN, ENKALON, SISALS,
etc.

FURNITURE

LEADING MANUFACTURERS

LIGHTING

LARGE SELECTION

CURTAIN FABRICS

WIDE RANGE OF DRALONS, SHEERS, COTTON and
SCANDINAVIAN FABRICS, etc.

GIFTS - GLASS

Home Design

1-2 RYDE HOUSE
CHOBHAM ROAD
WOKING

Telephone 72700

The most spectacular Woking development, however, is **Goldsworth Park** which is being hailed as the largest single housing scheme ever attempted in England. History here repeats itself for, as with Hook Heath back in the 19th century, this new estate depends upon the release of land—600 acres of it—by the Slocock family

The Goldsworth Park estate was started at the beginning of 1974 and its first residents have now settled in. Two bedroom terraced and semi-detached bungalows with garages at a price of around £12,000 are proving ideal from the newly-weds points of view but, in addition, there are three and four bedroom houses up to the £30,000 mark — and fine houses these are. A show area can be located in the centre of Woking where 12 fully furnished show houses are on view.

Goldsworth Park is to be developed over a period of years and, during its development, hundreds of trees will be transplanted and, when complete, the estate (which will house around 5,000 families) will also include three schools, shops, inns, churches, a fire station, library, health centre and some 42 acres of playing fields surrounding a 17 acre lake. It will provide a wide variety of housing to suit large and small families, young and old, and will well complement the older and more established areas of Woking.

All we have so far mentioned concerns houses for sale but Woking's Council recognises that about 36 per cent of families either cannot afford to buy or prefer not to do so. To meet this demand they hope to build some 2,000 new dwellings over 10 years on sites mostly at Horsell, Knaphill and Byfleet.

ROBINSONS

The Family Store for Personal Service



GROUND FLOOR

Menswear
Hosiery
Scarves
Haberdashery
Jewellery

LOWER GROUND

Linens
Dress Fabrics
Furnishing Fabrics
Heel Bar and
Engraving Centre

1st FLOOR

Fashions
Lingerie
Corsetry
Easter Dereta
English Lady Shop

2nd FLOOR

Baby Linen
Boyswear
Girlsweat
Schoolwear

★ 3rd Floor Restaurant

9-17 CHERTSEY ROAD, WOKING

Tel. 61188



Open all day Wednesday
Closed all day Monday



WOKING'S NEW CENTRE

If Woking's Goldsworth Park marks its prowess in the field of housing progress then its spectacular new town centre puts it well ahead of its rivals in the redevelopment stakes. Now complete, this centre has changed much of the face of the town and a person revisiting the town after an absence of five years of so would be hard put to recognise the place—although old and favourite landmarks do survive, albeit with new neighbours.

The completion of the new relief road—Victoria Way—has effectively taken all through traffic out of the central area and thus restored a new dignity to the shopping streets and, above all, a new feeling of quiet that is as refreshing as it (at first) is strange. Shoppers can actually hear the birds sing!

For shoppers a new ground level car park has been laid out alongside Centre Pools. Two other multi-storey car parks already exist—one for 900 cars and one for 650. The aim is to ensure that adequate parking is to hand for all comers so that Woking's great advantage over neighbouring towns is preserved.

Three of the major features of the new centre are open and in full use. Firstly, we have the Centre Pools which include a covered swimming pool, a teaching pool, sauna and slipper baths, secondly the Centre Halls which include a theatre, a banqueting and dinner dance suite, a restaurant, fully licensed bars and meeting rooms, and thirdly the Central Library a most attractive building that shares a distinct architectural 'house' style with both the Centre Halls and the Centre Pool. Clear clean-cut lines and low level roofs are a feature of these three buildings.

Work on the shopping complex is now complete and when it is in full use it will, with its major retail stores and convenient parking, establish Woking as one of the leading shopping centres in North West Surrey. The complex, developed as a joint venture of the Woking Borough Council and the Norwich Union Insurance Group extends north from Commercial Way which is itself now freed of traffic. In all, the scheme comprises three major retail shops, Sainsburys, Boots and Macfisheries; 74 other shops; 48 flats, over 130,000 square feet of offices and such amenities as public toilets. Three lifts link the complex with the 650-car multi-storey park and this, in turn, is linked with the Victoria Way relief road.

The main feature of the development is the 16-storey office block which rises from the shopping area. The shops flank the north side of Commercial Way which is now tastefully paved and attractively set out with seats and trees along its entire length. Above these shops are the flats which are set back from the street in tiers—they will provide a luxury town centre living and re-inject 'after hours' life to the town centre. Other shops line four covered shopping walks of which Wolsey Walk leads to bus stands at Cawsey Way, whilst Mercia Walk and Middle Walk link with the new pedestrians-only Town Square. This square, a true focal point at the heart of town, has Christ Church on one side and the new Centre Halls and Central Library on the other.

The War Memorial originally erected in 1922 was moved to its new site in the Centre of the Town Square in 1975.



Erskine Cars

***5-STAR SERVICE
FOR THE WORKING MOTORIST***

- ★ NEW AND USED CAR SALES
- ★ FORD SURE SERVICE
- ★ BODY AND PAINT REPAIRS
- ★ FORD PARTS AND ACCESSORIES
- ★ CAR AND VAN HIRE

Erskine Cars Limited

123 MAYBURY ROAD, WOKING, SURREY

Telephone: Woking 73323 - Car Hire 70858

MAIN



DEALER



A fine aerial view of Woking's new Town Centre showing the close proximity of the British Railways Station (See page 21 for a reference to the excellent train services).

Other developments in the centre of Woking proceed hand in hand with this shopping complex. The new Market Square has been formed between Cawsey Way and Victoria Way (which is here spanned by an elegant footbridge to give shoppers safe access) whilst elsewhere new stores are being planned for the British Home Stores and the Fine Fare. Within the Market Square is the new covered market with some 50 to 60 covered stalls and refreshment kiosk. It is a 'traditional' link with the modernity that is the characteristic of the rest of the new centre.