

ALDERSHOT & DISTRICT
TRACTION CO. LTD.

EASTER, 1957

21st and 22nd APRIL

**Express Services to
Bognor and Brighton**

From WOKING COMPANY'S OFFICE at 8.37 a.m. each day

Returning from BRIGHTON 6.15 p.m.
from BOGNOR 6.45 p.m.

	Single	Day Return	Period Return
RETURN FARE IN EACH CASE	6/6	9/3	12/-

EXCURSIONS

		Return Fare
Sunday, 21st April	EASTBOURNE at 8.15 a.m.	13/3
	WORTHING (half day) at 1.45 p.m.	8/-
	WINDSOR (half day) at 2.30 p.m.	4/-
Monday, 22nd April	WORTHING at 8.30 a.m.	9/3
	LITTLEHAMPTON at 1.45 p.m.	8/-
	GOODWOOD MOTOR RACES at 10.40 a.m.	9/3

Owing to fuel rationing early booking is essential to avoid disappointment

"IT'S FAR BETTER — BY TRACTION"

The Woodbridge Press, Ltd., 52, Chersey Road, Woking, Tel. 60.

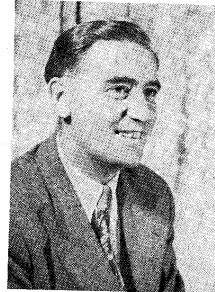
**SHEERWATER
PYLON**

Organ of the Sheerwater Community Association

Vol. 5 No. 7

APRIL, 1957

Price 3d.



JIM McDERMOTT

VICE-CHAIRMAN 1953/54
SECRETARY 1955/56

SECRETARY 1954/55
VICE-CHAIRMAN 1956/57

AND NOW

CHAIRMAN

**SHEERWATER COMMUNITY ASSOCIATION
1957-1958**

SUPPORT HIS SERVICE

**SHEERWATER
PYLON**

Organ of the Sheerwater Community Association

Vol. 5. No. 7

APRIL, 1957

Price 3d.

Message from the Chairman

A year ago the newly-elected Chairman, Richard McLoughlin, wrote to you under the heading "Reluctant Servers." That title was then true, but his year of office transformed the picture completely, and those "unwilling" officers, without exception, volunteered for further service to the members of the Community Association and the residents of Sheerwater in general.

Unfortunately "Mac" was unable to continue as he has now left the district, and it falls on me to carry on his excellent work. I am honoured by the confidence that has been placed in me, and I will endeavour by all the means within my power to maintain the high standard which has been set.

My task will be made easier by the known loyalty of the officers who are carrying on. We are proud of the record that the Association has achieved over the past five years and, as a team, will strive to cope with what we know still remains to be done during the next twelve months.

Remember, friends, last year the membership of the Association increased to over 600 families. With your continued support we can make this sixth year of the Association one of record achievement.

**ALPINE
LAUNDRY**

Eve Road, Woking
(nr. Woking entrance to Estate)

FULLY FINISHED SERVICE

Collect
WEDNESDAY mornings
Deliver
SATURDAY mornings

BAGWASH SERVICE (daily)

4-18lb. dry weight
Collect MONDAY
Deliver TUESDAY
Collect WEDNESDAY
Deliver THURSDAY

**DRY CLEANING
3 DAY SERVICE**

Telephone — Woking 1719

FOR

Rapid Service/Sales

J. R. HARGREAVES

YOUR LOCAL

HOOVER

REPRESENTATIVE

May be contacted by
telephoning

G. Duder Gray : Woking 3030

S. E. Electricity Board:

Woking 1700

or leaving a message at

9, Albert Drive, Sheerwater

Look for the

BARGAINS

in the

SOCIETY'S WINDOWS

WOKING CO-OPERATIVE SOCIETY Ltd.

PERCY STREET :: WOKING

Phone - Woking 790

SHEERWATER COUNTY SECONDARY SCHOOL DRAMATIC SOCIETY

FOR the second year in succession the above Society is giving the first performance of a new play which has been specially written for the occasion by Mr. C. F. R. Tiller, the Senior Master. It is a full-length three-act drama entitled "A Hand Through Time," and is a companion piece to last year's production, "The Man in the Tumulus," also written and produced by Mr. Tiller.

It may be recalled that "The Man in the Tumulus," a drama in the fullest possible sense, was a play in the "Time" genre, dealing, as it did, with the artificial nature of the conventional divisions of Time and the blurring of the barriers between Past and Present which can take place given the right circumstances and temperaments. This year's production is also a "Time" play but differs from "The Man in the Tumulus" in that the main theme is the influence on the Present of the Future rather than of the Past; the shadow, as it were, cast on the brightness of the Present by the events of the Future. Can we stretch "A Hand Through Time" and pierce the mists that shroud both the Past and the Future? Was J. M. Dunne correct in his theory that we can, in dreams, travel not only backwards but forwards in Time? Is there, in fact, a world just beyond the bounds of ordinary perception, untrammelled by conventional limitations of Space and Time, in which the sensitive spirit becomes aware, not only of the menace hidden in the years—even the centuries—yet to come, but also of the essential fragrance and beauty lingering in the untrod days still untouched by the de-

Page 4

filting feet of "civilisation," which are ours—at a price?

It is with searching themes such as these that "A Hand Through Time" is concerned and in them lie the suspense and drama which make themselves felt from the outset and develop with mounting intensity throughout the play, reaching a thrilling climax in the final act, when tension and pathos mingle and are resolved.

Once more the setting is Wiltshire, but this time we have left the bleak grandeur of Stonehenge for woods of Fonthill Abbey, the fabulous mansion of the eccentric William Beckford, the millionaire who started the 19th century with his fantastic magnificence.

The setting, décor, and lighting are again the responsibility of Messrs. Beattie, King and Hall, whose work gave such pleasure in 1956. As was also the case with "The Man in the Tumulus," music plays an important part in the production, being integrated with the action throughout.

"A Hand Through Time" is being performed on April 11th, 12th and 13th, at 7.15, 7.15 and 7 p.m. respectively. Tickets, priced 3s. 6d., 2s. 6d. and 1s. 6d. are obtainable at the School from Mr. R. B. Brooks, Business Manager, the School Secretary or members of the School. Seats may be reserved (Tel. No. Byfleet 3772), or may be obtained at the door.

C. F. R. TILLER.
THE LAST WORDS

While you are appreciating Mr. Tiller's masterly exposition of the subject matter of this year's school play, I feel I must add a postscript to his efforts. It is my intention to

divert your thoughts from the sublime to the mundane.

Writing as the Business Manager, on whose shoulders rests the responsibility of selling the seats, I make this appeal:—

IT'S YOUR SUPPORT WE'RE
AFTER

The annual School Play represents a great deal of work on the parts of pupils and staff over a long period of time. In point of fact, work commences in August and ends in April. The reasons for this lengthy and frequently frenzied activity are many. Firstly, both pupils and staff enjoy the work. Secondly, we aim to foster in the pupils a love of drama and acting which will stay with them throughout their lives. Thirdly, we try to open new fields of thought and endeavour, through glimpses of the opinions of Richard Jefferies, J. M. Dunne and others. Fourthly, we feel that the annual play adds to the cultural life of the school.

You can help us on April 11th, 12th and 13th. This is your Secondary School; please come along and see what we can do. Reserve your seats at the school, by letter, by phone or come in to see me. The cast, pupils and staff will appreciate your attendance at one of the performances. Put one of these dates

in your diary—take my word for it—this play is good, don't miss it.
R. B. BROOKS,
Business Manager.

SHOWING TALENT

Do you sing, dance, act, play a musical instrument, or play the foot (clean jokes only)?

There is opportunity for you to take part in the SHEERWATER STAR SHOW, now being arranged for production during Scout Week (July 7th to 13th). The number of acts will have to be limited to about 20, but auditions will be arranged in order to get the best balanced programme.

Organisations are asked to take part, in addition to solo acts, and those of you who know of talent on the estate which you would like to see included, please tell us.

Name, address and brief detail of act to STAR SHOW, c/o The "Pylon," 108, St. Michael's Road, Sheerwater. All applications will be forwarded to the producer.

IN THE PICTURE

At most of the major functions on the estate we see the familiar figure of Mr. A. G. Scott, with his camera putting Sheerwater "in The News."

In response to requests, arrangements have been made for all photographs taken by Mr. Scott to be on view in the Community Centre, and copies of these can be obtained from Mr. Scott's new studio at the rear of 12, Rosemont Parade, West Byfleet.

The services of Mr. Scott are available for all functions, parties, weddings, etc., and personal photographs can be taken either in your home or at the studio. Contact can be made at 319, Albert Drive (telephone: Byfleet 4508).

**FAMILY FARE
STORES**

175-177 WALTON ROAD
Telephone WOKING 2256

Grocers and Provision
Merchants

Daily deliveries in Sheerwater

A. B. MAY

M.P.S., F.S.M.C.

Qualified
Sight Testing Optician

Maybury Arch, Woking
Telephones: WOKING 696

Page 5

Sheerwater Gardening Association

UP to the time of writing the gardeners here enjoyed a really mild spring, and we have managed to get away with a good start this year. A queue at the Hut is most unusual for this time of the year, but we have had queues for the past month.

We have a good supply of Main Crop and Late Seed Potatoes, which is selling very well, and there is now a larger selection of Flower and Vegetable Seeds for your choice. We have also Dahlias and Gladioli direct from Holland, with colour plates for you to see, and the new Chinchinchee is in popular demand.

Stock at present consists of: Composted Mushroom Manure, Hop Manure, John Innes (Potting and Seed), Peat, National Growmore, Superphosphate, Sulphate of Ammonia, Bone-meal, Potash, Lime, Stimulawn, Bio Humus, Vermiculite, Sulphur and other Sprays, Liquinure; Beans, Peas, Shallots and Onion Sets; Garden Hoses and a very large range of Garden Tools.

Now is the time to support Peas. The best and cheapest method is with twigs. As a preventive against early pests use one of the dust protectives and place cotton or twigs across the rows to keep off the birds. Sow Carrots, Onions, Spinach, and perhaps an additional row of Peas (I recommend ONWARD for this sowing). Apply a dressing of fertiliser to the Potatoes and draw up the soil around them. Harden off Brassicas, etc., and sow Radish and Lettuce outdoors. Plant out Cabbage and Sprouts — VELOCITY Cabbage for a quick return. Make up Celery trenches, prepare Tomatoes

Page 6

for outdoors, plant Leeks and Maincrop Peas.

Start a new compost heap with the old green vegetation provided by the general clean-up and don't forget to keep a supply of straw or rotted manure handy in case we have one of those late frosts.

In the Flower Garden, Bush Roses and Evergreens should now have been pruned. Sow the Annual Border, prick out early flowering Pansies, harden off Antirrhinums, plant Dahlia tubers for shooting, plant out Montbretia, Sweet Peas, Border Carnations and Gladioli.

Sow and replenish Lawns with 1½ to 2oz. of seed to a square yard. This will give quite a thick grass cover, allowing for losses due to birds, etc. Don't forget—buy a GOOD seed and protect well from birds. Narrow verges and sloping land are better turfed, but don't delay turfing, otherwise the rooting will not get established if a dry spell should follow.

I am very happy to say that the allotments are looking better this year than I have ever seen them, with the neglected plots now being worked by very energetic new tenants. I would here like to make an appeal to the parents of children who make an entry to the allotment sites—how very wrong it is to trample down crops that have taken much labour and patience to grow. Please make it clear that the Committee intend in future to take action against the offenders.

PRELIMINARY JUDGING for the L.C.C. SPRING FRONT GARDEN COMPETITION will be carried out by the Committee this month. Some additional names on

Sheerwater Angling Club

Hints and Haunts for Anglers

SOMETIMES there are days when the conditions of water and weather are such that roach and dace will refuse to take all submerged baits or at best will only bite infrequently.

This is often the time to go after them with a "turned" maggot or chrysalid. Usually the day will be warm and fish will be rising to the surface to feed off drifting patches of weed and floating insects. If they are doing this your chances of catching them with baits on the bottom are very slender indeed.

During a hot spell, when the water runs slow and clear, chrysalids will often yield good catches when all else fails. For this type of fishing a No. 16 or 18 hook is best as they are small enough to be concealed within the body of the chrysalid. No float or lead shot is needed; the thing to do is to keep the line tight ready for an instant strike. This is obtained by lifting the rod tip gently but quickly and the fish is hooked. A wild strike will all too often result in a snapped line.

Make no mistake about it—quietness is essential; walking along the bank in full view of the fish will only scare them away.

Dace in particular love chrysalids, and I have caught with this bait floated down stream to them.

Sometimes one may reap an unexpected harvest, as I once did when I struck blissfully expecting another dace or roach but instead I had hooked a glistering chub.

This is a most pleasant way of fishing on a warm day, so when you see fish feeding on the surface try this method—it may surprise you.

With the close of the season we close also our series of "Hints and Haunts for Anglers," and hope they have proved not only pleasant reading but also of value to those of you in our midst who are now adept with rod and line.

We are indeed pleased to announce that "Caster" is preparing a new series and know that you will look forward to the continuance of this excellent feature in our magazine.

GARDENING—cont. from page 6. The Committee list will be very welcome to assist in this and other essential tasks which we undertake.

Allotments Rents are again due on April 1st, as are Subscriptions, and we will be pleased to welcome new members at the Hut any Sunday morning. To Poultry and Rabbit keepers we can now arrange for

Corn and Meal to be delivered regularly every THURSDAY by a reputable Chertsey supplier.

Next month we hope to publish a list of all BEDDING PLANTS which will be available at the Hut, and if the Committee can be of service to you in any way let us know.

BOB GOOCH.

Page 7

Within the Community

1st Sheerwater Brownies.

THE Pack celebrated an extra special occasion last month at a joint meeting with the 1st Sheerwater Guide Company, in St. Michael's Church Hall; not only were three new Brownies enrolled and welcomed into the Pack but—for the first time—a Brownie had qualified by passing all tests and becoming a First Class Brownie to "fly up" into the Guides.

Brownies, Guides, their parents and Pack and Company Officers watched the traditional unwritten ceremony of "Flying Up," in which the successful Brownie, CHARMIAN BATY, had her wings fitted to her, renewed her Brownie Promise, and received from the whole Pack the Grand Salute. Charman took a last ceremonial farewell of Brown Owl, Tawny Owl, and each member of the Brownie Pack, then, assisted by two Guides, she flew over the Brownie Toadstool and into the Guide Company. There she was welcomed by the Guide Captain (Miss J. Kinney) and Guide Lieutenant (Mrs. P. Martin), together with each member of the Company, to take her place as a Guide.

Charman had done very well in passing all her badges to become a First Class Brownie within twelve months, and Brown Owl (Mrs. D. Gimbert) said both she and Tawny (Mrs. Kingett) were very proud of Charman and wished her every success and happiness as a Guide.

Miss M. Nicholls (Divisional Commissioner) was present at the ceremony, together with Miss Tapesfield (District Commissioner) and the Scoutmaster, Cubmaster, and Assistant Cubmaster of the 2nd Sheerwater (St. Michael's) Scout Troop. Miss Nicholls spoke of the

immense value of the Guide Movement and the urgent need for more helpers—emphasised by Brown Owl, who said that the present waiting list for her own Pack now had thirty names on it.

During the evening parents and friends were entertained to tea and the meeting closed with Brownie "Bells," followed by the singing of "Taps" by the assembled Guides.

Is there anyone willing to take on another Brownie Pack? Brown Owl and Tawny will give you all the help needed in this grand work for the youngsters of this estate; please contact Mrs. Gimbert at 18, Bateson Way, Sheerwater.

British Legion.

The Sheerwater Branch of the Legion is now settled in its new headquarters at the Scout Hut, Lambourne Crescent. Club nights are held every Monday at 8.30 p.m.

There is a welcome for all, whether you are members of the Legion or not, so why not come along any Monday to see and join in our activities.

Old People's Club.

Like a good many more I have had to beat the mat when that old enemy, Common Cold, gets me down. Consequently during these last few weeks I have been out of touch with club arrangements. This, however, gives me an opportunity to write about something that I have had on my mind for some time.

Nothing pleases the Old Folk more than a good musical evening. Unfortunately we are severely handicapped in this respect as, although we have a piano, we haven't got a pianist.

Angling Club.

Winning weights in the best fish of the season competition for 1956-57 are: Pike, 9lb.; Bream, 5lb. 9oz.; Chub, 3lb. 4oz.; Carp, 1lb. 5oz.; Tench, 2lb. 9oz.; Roach, 2lb. 10oz.; Perch, 14oz.; Dace, 8oz.; Gudgeon, 10z. 12dr. The best specimen fish was voted to be the Tench. All catches and weights were witnessed and verified.

Names of winners and presentation of prizes, together with the Annual Cups, will be made at the Annual Presentation Dance to be held this year in the Community Centre on Saturday, May 25th. Further details next month of our "Dance of the Season," but make a note now of a date not to be missed.

Notice is given to members that the Annual General Meeting will be held in the Community Centre on TUESDAY, APRIL 30th, commencing at 8 p.m. All members are asked to attend and a cordial welcome is given to all other anglers on the estate and our many friends to come along and hear our news of the past season and our plans for the next.

Methodist Church.

The first boy to have his name on the Junior Missionary Society Roll of Honour is Alan Willis. Alan received the J.M.A. Medal for his collecting over 45 during 1956. Other awards of seals and gifts of appreciation were made to Janet Phelps, Pat Willis, Anne Erriman and Graham Patey. Certificates for having completed their first year of service have been presented to Sheila Bamister, Celia Martin, Christine Prince, Susan Hilliard, Diane Coleman, Denise Whitcomb and Michael Barnes.

Children of the Sunday Schools invite their parents and friends to come to their Anniversary on Sunday, April 14th. Welcome to any

Now what I have in mind is a radiogram. If you happen to have one or know of somebody else that has one which is not wanted or rarely used maybe you would like the Old People to gain much pleasure and enjoyment from it. I do hope someone will answer our appeal by communicating with the committee at 65, Bunyard Drive. It would ensure for us a real entertaining evening at any time, and earn the gratitude of the Old People.

From what I have heard lately concerning some of the functions of the many sections of the Community there is an "Aunt Sally" that wants knocking out good and proper. I refer to Apathy.

It is heartbreaking when a Social Committee works hard to prepare a show and people come from perhaps a long distance to entertain only to find a few minutes before the show is due to commence that the hall is practically empty. Of course, a few ultimately turn up late to make a fair audience.

But just realise the feelings of the organisers who are dreading that they will have to make abject apologies to the artists.

So make an effort to attend whatever functions are got up for your special benefit and express your appreciation of the work of your committee. Don't think for a moment that you won't be missed—you will!

Now just a brief reference back to the Old People's Club.

We have to thank Mr. Hyde and his Skiffle Group for a very happy evening and assure him that his grand show was greatly appreciated by the old folk; come again, please, Mr. Hyde.

To the Scouts we offer our warm thanks and, while admiring their prowess at the show they gave us, we hope to beat them when they come again.

Finally, to the Community Association who sent us a most luscious basket of fruit, our gratitude and best wishes for a very prosperous and prosperous year.

A. E. TIMMS

A violin and piano concerto was in progress and the music being played called for a number of solo efforts by the violinist.

During one of these a dear old lady leaned forward and poked the young pianist with her umbrella.

"Never mind," she whispered, "I expect he'll play something you know in a minute."

The Life Boys.

May we remind you that our 2nd Annual Display will be held on Saturday, April 27th, in the Methodist Church, commencing at 7 p.m. Our chief guest will be Mr. Mayhew, who is President of the South Surrey Group, The Boys' Brigade.

Please come along and enjoy a jolly good evening, at the same time helping the young boys on the estate. Programmes, price 1s. 6d., can be obtained from any member of the Team or are available on the night of the Display.

D. REUSS.

Community Association.

The second of our social "get-together" evenings, held on St. Patrick's Eve, continued the success of our inaugural one, although the attendance was not so great. This, however, in no way lessened the complete enjoyment and participation in "everything going" of nearly a hundred Pats and others who came along (some say it was more comfortable with the extra "breathing space").

Our thanks are again due to Mr. "Geoff" Beedell for his highly efficient continuity of the evening's entertainment, Messrs. Bill (Spud) Lewis and Syd Clamp for equally efficient management of "Murphy's

Page 11

Joint," Mrs. Doris Clamp, and Messrs. McDermott, Burger, and Howard for their able assistance.

Among the highlights of the evening were the celebration in appropriate style of the 13th wedding anniversary of Mr. and Mrs. W. McLean (known to all and sundry as "Jock and Norma"), the Rebels Skiffle Group (flushed from their Aldershot endeavour to crash in the "Big Time"), and the charming ladies from the Old People's Club who left the Youth Club boys way behind in their "Rock and Roll", not forgetting the unmentionable "incidents" which always add to the laughs in our evening of fun and games.

St. Michael's Church.

Mr. T. Watts, of 24, St. Michael's Road, is resigning from the position of Hall Secretary—a job which he has held for the past three years. Will all those wishing to hire St. Michael's Hall after March 30th please contact the new Hall Secretary, Mr. H. W. Ellis, of 33, Lockwood Path. Mr. C. L. Sharmar, of 137, Albert Drive, for three years Treasurer of St. Michael's Church, is also resigning, and he is succeeded by Mr. R. Hall, of 36, St. Michael's Road.

Sheerwater Youth Club.

The result of the Caravan Holiday Draw was: Winner, ticket No. 102, G. B. Payne, of 4, Rupert Road, Guildford; 2nd, ticket No. 1,025, F. Hack, of 75, Rectory Lane, Byfleet; 3rd, ticket No. 610, T. Davis, of 10a, St. Andrew's Square, Surbiton; 4th, ticket No. 556, Mrs. Hudson, of 43, Bunyard Drive, Sheerwater.

Our Wednesday night Whist Drives held in the Community Centre now commence with a six-hand Partner Drive, followed by the main Drive of 20 hands, with a new Jackpot Competition to be won every fourth week.

Page 12

all of the three services at 11 a.m., 3 p.m., and 6.30 p.m.

In addition to the usual services at Easter there will be a Good Friday Service at 11 a.m. and Holy Communion on Easter Sunday at 8 a.m.

St. Michael's Boys' Club.

Once again our tournament season has begun, with the usual quest for titles in Billiards, Snooker, Table Tennis, Chess, Draughts, Darts, etc. Already the dark horses have appeared, knocking out the likely champions, but Terry Cole, winner at Billiards and Table Tennis and finalist at Snooker last year, is still the favourite for all three titles this year. Competition gets keener every year, and John Josey, John Sharmar, and Alan Jewell are among those closely contesting. Paul Biscoe appears to be the favourite for Chess, but here, too, we have several likely champions. The results of all tournaments will be published in these columns as and when they become known.

Most of the names mentioned above are well known as footballers, and here it is perhaps the right time to say that the St. Michael's boys' soccer team has been unbeaten this season. Any boys' team fancy a game? All teams 15 years and under are welcome. We do not claim to be unbeatable but fancy ourselves to give a hard game to any team of our own age group.

We regret that owing to the smallness of our hall we are still unable to accommodate the many boys who wish to join the club. We still have a waiting list, and as vacancies occur, due to boys leaving Sheerwater or other various reasons, they are at once filled by names taken from this list.

1st Sheerwater Scout Group.

On behalf of the Group I would like to say "Thank you" to all those people who have supported

our small but homely Whist Drives and those who have patronised our Jumble Sales. Despite inclement weather, the two sales on February 23rd and March 16th and the two Drives on February 16th and March 15th have raised between them a total sum of £19 10s. towards our Hut Fund.

We are holding a BEETLE DRIVE on Tuesday, April 30th, and our next Whist Drive will be on Tuesday, May 7th. Both at the Scout Hut, Lambourne Crescent, and we hope you will give us your further support for both these enjoyable events.

Recently to Scouts from the Troop visited the Old People's Club to do battle with them over games of Darts, Billiards, Shove ha' penny, Draughts and Dominoes. A most enjoyable evening was had by all, with the games ending in a draw. Attendance at our last Dance, held at the Drill Hall, Walton Road, was very disappointing, with only about 60 people to appreciate the dance-music of The Sundowners and variations provided by the Rebels Skiffle Group, who were right on form. What a pity so many of you missed this nice friendly Dance, especially the parents of Cubs and Scouts, for whose benefit these functions are run.

Conservative Association.

G. S. M.
On Thursday, March 22nd, Lady Low, Chairman of the Women's Advisory Committee (Working) was present at a gathering of the ladies of the Sheerwater Branch of the Association.

In her talk, Lady Low covered many aspects of the part the ladies can play in the branch activities, and many helpful ideas were received. Mrs. Hooper, Chairman of the Byfleet Conservative Women's Section, and Mrs. Walmesley

Page 13

Chairman of the Woking Village Women's Section, both spoke about their branch activities.

There will be a meeting for all lady supporters of the Conservative Party in mid-May, when the new officers and committee will be elected. Full details will be announced later, but any lady wishing to serve on the committee and/or take office is invited to notify the branch Chairman, Mr. H. F. Williamson, at 14, Bateson Way.

Old-Time Dance Club.

Notice is hereby given to members that the Annual General Meeting of the Sheerwater and District Old-Time Dance Club will be held in the Community Centre on FRIDAY, APRIL 12th, to commence at 8 p.m. A cordial welcome is extended to all members and friends.

On Saturday, April 13th, the first party of members from the Club will go to "The Ball of the Year" at the Empress Hall. For many this will be their first attendance at this world-famed event, where they will meet Sydney and Mary Thompson and dance all the well-known old-time dances in company with some 5,000 members of clubs all over the British Isles.

B.P. SCOUT GUILD.

The Sheerwater Branch of the B.P. Scout Guild is now registered at the Headquarters of the Guild (Reg. No. 46/072), and membership has increased from 9 to 21 in its first month. There are very many other Old Scouts on the estate who have expressed interest, and their joining will give the Branch a membership with keenness and willingness which will prove of great benefit to the three Scout Groups at present formed and others which may follow.

Meetings of the Branch are normally held at the Scout Hall, Lambourne Crescent, on the last Wednesday of each month. The next will be on Wednesday, April 24th, commencing at 7.30 p.m. If you are an old Scout or Cub

Page 14

please come along—you will find many of your friends and workers in other organisations who have already joined the Branch to give their service, where possible, to the active Scout movement.

The Branch Secretary is Mr. W. Welsh, of 90, Devonshire Avenue, who will be pleased to tell you about the Branch and why it has been formed; the Chairman is Mr. R. Prince, of the Anchor office (telephone: Byfleet 2527).

Membership fee is 2s. per annum, of which 2s. 6d. goes to H.Q. and 2s. 6d. is used for Branch activities. The first of these is now being planned, and meanwhile the members are helping in the construction of the Scout Hut at Lambourne Crescent. It is hoped to put on a show during Scout Week for the financial benefit of all three Scout Groups on the estate, and if this can be arranged you will hear more at a later date.

EASTER MESSAGE

The earth is stirring—Nature's sleep is over:

Tree, shoot, bud, tremble with life again,

Reincarnated; from the dark bowels of the earth

Nurtured by the eternal touch of sun and rain.

Fulfilling a promise, since the world began

This message of spring and Easter-time,

That fills the searching heart with constant hope

Our eyes to see the presence of a love divine,

Giving a message, a consolation and a certainty

That life goes on beyond this mortal frame;

Which is but a cloak to robe ourselves,

To cast aside, and so unencumbered live again.

MARGARET DARVILL.

(Copyright.)

Whist Drives, Church Services, Community Sing-songs, Jazz Sessions, Organ Recitals, Rink-hockey, Tennis, Putting, Bowls, Concerts, Car and Cycle Rallies, Rambles, Repertoire, Bowling, Panel Games, Boating and Swimming; with special programmes for juniors and children, who also have their own Camp Clubs.

Artists who entertain at the Butlin Camps include many of the popular stage, radio and T.V. stars, with well-known bands to provide musical entertainment and professionals in most fields of sport for coaching and exhibitions. Winners of the many sponsored competitions receive good cash and other prizes, and for many Butlin's has already proved the first step to stardom.

Adequate provision is made for those who prefer to completely relax—with rest and quiet rooms, well-laid-out gardens, coach tours, etc., and mention must also be made of the inclusion of facilities for religious devotion. Each Camp has its own Church with resident chaplains and is served in addition by a local Methodist minister; for Roman Catholics facilities are made available to attend Mass at the Camp or local Roman Catholic Churches.

In conclusion, for those of you who may still prefer a hotel to a holiday camp, the Butlin organisation caters equally as well with all-in tariff at Brighton, Cliftonville and Blackpool. These hotels are open all the year round and have been specially designed to provide ideal accommodation according to needs.

That's all for the "Pylon," but if you would like further information of any camp or hotel Butlin's will be only too pleased to help you. Write to Butlin's, Ltd., at 439-447, Oxford Street, London, W.1.

Page 16

HERE'S TO A HAPPY HOLIDAY

MANY of you are this year contemplating the possibility of your first holiday, having got over the costly business of settling in your new homes. To assist those of you who are still undecided where to go and what you can afford, we hope this article may prove of use.

It is, of course, not possible to cover a very wide range in a little space, so we are taking the obvious popular choice for a community of this nature—HOLIDAY CAMPS. Over the past few years more and more are realising the value of this kind of holiday, not only from a monetary angle but also as an enjoyable family holiday catering for all tastes.

Just as with hotels and boarding houses, a Holiday Camp can be good, bad, or indifferent, so it is just as well to play safe and book with one of known repute; costing perhaps a little more but a guarantee of value. So we come to the obvious choice of BUTLIN'S, and the information which we have obtained from this world-famed concern is a real "eye-opener" for those who may still be a little distrustful of this type of holiday.

Firstly, the situations of the Butlin's Camps—six in all: AYR (Scotland), FILEY (Yorkshire), SKEGNESS (Lincs.), PWLLHELI (N. Wales), CLACTON (Essex), and MOSNEY (S. Ireland). All the Camps are on the edge of the sea, each with its own beach and swimming pool, and accommodation is in chalets equipped for 2, 3 or 4 persons suitably allocated according to the relationship of members of the party.

Bookings are from Saturday to Saturday only between July 13th

and August 17th, but at other times (if accommodation is available) odd day bookings can be accepted for a period of not less than three days, with a minimum period of four days at Whitlins.

Tariffs: these vary slightly according to Camp and month of holiday, but range between £10 and £13 per week for adults with reduced rates for children 9-14, 6-9, 2-4, and under 2 years of age. The tariffs are ALL-IN, including membership of the Camp Holiday Club with its many facilities, and the vast extent of these all-in provisions well justify the claim of Butlin's to provide the BEST at a reasonable price. A deposit of £2 per adult and £1 per child for each week is required and the balance is payable on arrival at the Camp.

At FILEY there is room for 2,800 campers each week, with a staff of 1,876; SKEGNESS, 7,200 campers with 1,636 staff; PWLLHELI, 7,500 campers, with 1,788 staff; and 4,000 campers at CLACTON and 3,000 at AYR. The large staff employed gives some indication of the extent to which Butlin's cater for every need of the camper.

Entertainment is perhaps one of the major reasons for the immense popularity of the Camps. Glancing through a typical week's entertainment programme included in the all-in tariff, it is hard to find any item of interest not catered for; there is something of everything for all ages and tastes, with top-line names and national competitions well interlaced. The list includes Billiards, Snooker, Table Tennis, Darts, Skating, Rugby Coaching, Tombola, Ballroom Dancing, Variety, Soccer Coaching, Cabaret, Old-Time Dancing, Television,

Page 15

OF SPORTING INTEREST

The 1st Round of the Table Tennis Competition for the Community Association Cup has been completed with results as follows: Sheerwater Youth Club "A" beat Sheerwater British Legion 5-4; Sheerwater Community Association beat Catholic Youth Section 7-2.

Catholic Men's Guild beat Sheerwater Labour Party 6-3.

St. Michael's Men Club beat Sheerwater Angling Club 9-0.

Wandsworth Electric Social Club beat Sheerwater Conservative Association 7-2.

Sheerwater Youth Club Management Committee beat Sheerwater Youth Club "B" 6-3.

Draw for the 2nd Round is: St. Michael's Men Club v. Wandsworth Electric Social Club.

Youth Club "A" Team v. Catholic Men's Guild.

Community Association—bye.

Youth Club Management Committee—bye.

Semi-Finals: Community Association v. St. Michael's Men's Club or Wandsworth Electric Social Club.

Youth Club Management Committee v. Youth Club "A" Team or Catholic Men's Guild.

It is hoped that all matches in the 2nd Round and the Semi-finals will be completed by the end of April, and the Final is therefore provisionally arranged for Tuesday, May 7th. The Final will be held in the Sheerwater County Secondary School, to commence at 7.30 p.m.

ONE YEAR OLD TIME

TWELVE months ago I wrote of the newly-formed Sheerwater and District Old Time Dance Club. That, despite the scant success of a previous similar venture and the ominous date of its official opening, Friday, the 13th, here was a social amenity destined to become firmly established.

The decision to bring to the people of Sheerwater the most delightful and picturesque of all dancing was taken by a few people who had the personal knowledge of its truly communal value; with colourful setting, memorable tunes, and innumerable dances of delight, giving a feeling of real pleasure, not easy to describe but with results of obvious value.

So the "Long Night" Dance held recently in the Community Centre was a special occasion for the members of the Sheerwater and District Old Time Dance Club, for they celebrated the end of their first year of Old Time on this estate. With musical honours by Mrs. Couldrey and the Regency Players, guests from the Bagshot and District Old Time Dance Club, visitors from many others, and friends on Sheerwater conveyed their congratulations.

Mr. C. Cole, traditionally on behalf of the Chairman and members, warmly welcomed their guests and visitors. Speaking of the efforts of their Chairman, Mr. A. Paterson, he said it was largely due to his hard work and great enthusiasm that the club came into being. Membership is now over 100 and still increasing. They have had many enjoyable evenings in a good healthy spirit, and Old Time has

brought them many new friends in and around the district.

The Secretary of the Bagshot and District Old Time Dance Club, Mr. A. Walls, congratulated a club entering its 2nd year from one now in its roth. He had no doubt whatever that the Sheerwater Club was going to do equally as well, and their members looked forward to many more most enjoyable evenings together. Mr. Walls concluded by saying how fortunate Sheerwater was to have for its instructor Mr. "Ted" Gallagher, for to him and many others "Mr. Gallagher is Old Time."

After the appreciation of the club had been expressed to Mr. and Mrs. Gallagher, together with Mrs. Couldrey and the Regency Players, Mr. Gallagher said he was at first rather pessimistic when asked to bring Old Time to Sheerwater, but his doubts were soon dispelled by the thorough enthusiasm of Mr. Paterson and his colleagues. He could now say he was not only pleased but very proud of his association with this newest of local Old Time clubs.

Organisation of the Long Night Dance was by Mr. A. Paterson (Chairman), Mrs. C. Cole (Treasurer), Mr. D. Reuss (Secretary), and members of the Committee. Refreshments served during the evening by Mrs. Paterson, Mrs. Arnold, Mrs. Cole, and Miss Gilmore were all provided by members of the club, and it was also pleasing to note that spot prizes were won equally by members of both Sheerwater and Bagshot, with competition winners being Mr. Porter (Sheerwater), Mrs. Newman (Bagshot), Mrs. Brightwell (Bagshot), and Mr. Barnett (Sheerwater).

Page 17



The Editor Writes



SAME OLD FACTS

THE familiar cry of our whist-drive devotees may seem well applicable to those entrusted with the Community Association's affairs of management for the next 12 months.

But there is a difference: as witness the almost entire absence of the A.G.M. of "press-gang" technique or "kid" stunts, whichever expression you may prefer. Have no suspicion of the ready group acceptance and lack of opposition, for the re-election of honorary officers with mutual acknowledgment of service augurs well in an age predominant with self-interest.

No spectacular change of policy or method of administration is predicted: the immediate desire of my colleagues and myself is a consolidation of the growing recognition that greater UNITY makes for greater BENEFIT.

Almost every one of the many organisations which we now have on this estate is established for a common purpose. To this end "co-operative" effort should be our aim, in preference to "competitive".

LABOUR OF LOVE

Making no apology for again reminding you that the staffing of the Sheerwater Branch Library is entirely voluntary, for two recent incidents have emphasised this.

To Mrs. K. Dewdney, recently resigned from the honorary position of Librarian, are due the thanks of the community for her devoted work from the beginning of the library's existence; forgoing many deserved hours of leisure, giving exactness to detail, and setting example to her younger colleagues which they are pleased to emulate.

Mrs. M. Duplock and Mrs. M. Scully have consented to act as joint Librarians, in furtherance of their Tuesday work, and Mrs. Tanner with her helpers will continue on Thursdays. We are indeed fortunate on this estate in that we have a nucleus of willing people, without whom a number of our amenities would cease to exist. Appreciation can best be shown by greater assistance in the work which they undertake.

Page 18

The powers that be are still talking of using one of the empty shops for library purpose. Latest news is an indication that premises could be made available on a 21-year lease, subject to conditions, at a reduced rental of £200 per annum. Estimates are now being prepared by the other side to find the cost of establishing and staffing, before their making a decision.

Always in favour of any progressive step, I am following this with much interest, but cannot resist comparison of the normal cost of this service with the present one of a very small sum for the use of the Community Centre plus the large sum of NIL for the services of voluntary workers.

A Personal Removal Service

G. CHAMBERLAIN

(Haulage and Removals), Ltd.

'MON ABRI,'
HIGH STREET, HORSELL
Phone: Woking 1603

REMOVALS AND HAULAGE
ANY TIME—ANYWHERE
'Exchange Removals' Undertaken

Estimates Free

MAY & THOMSON

51 Dartmouth Avenue

ALL MEDICAL AND TOILET
REQUIREMENTS

BELL & BUTLER

Your Local Quality Bakers & Confectioners

at

55 Dartmouth Avenue, Sheerwater

and

119 CHERTSEY ROAD
Tel. WOKING 1143

BROOKWOOD
Tel. BKD. 3128

HIGH STREET, HORSELL
Tel. WOKING 1143

THE PARADE, WESTFIELD
Tel. WOKING 4349

QUALITY GOODS AT THE RIGHT PRICES

BARGAIN BASEMENT

Introducing a new service to members of the Association who can advertise goods for Sale, Exchange or Wanted, at a nominal charge of 2s. 6d. per insertion. This special rate is for members only. Advertisements from non-members will be charged at current rates.

GARDENING TOOLS

Owner shortly going abroad has number of TOOLS for disposal, including spade, potato fork, pick, hoe, rake, hedge-clippers, 35ft. rubber hose, 3-nozzle spray, etc.—Apply 129, Albert Drive, Sheerwater.

EXCHANGE

2-BEDROOM FLAT in London (rent, 22s. 5d. per week) for a 2-bedroom Flat or House on the Sheerwater Estate.—Please apply to Mr. Leggett, 12, Fowey House, Kenning Way, Kennington, London, S.E.11.

FRENCH RAPID CLEANERS

167, CHURCH STREET

Phone: Woking 2101. Opp. Christ Church

24-HOUR PRESSING
SERVICE

DYERS AND CLEANERS

Page 19