

**ALDERSHOT & DISTRICT**  
TRACTION CO. LTD.

AGAIN IN POSITION TO QUOTE FOR  
**PRIVATE HIRE COACHES**

for all  
Occasions  
41, 38 and 32 seaters  
**QUOTATIONS GLADLY**

from  
The company's office or garage  
Goldsworth Road  
Woking (TELEPHONE 619)

**"IT'S FAR BETTER - BY TRACTION"**

The Woodbridge Press, Ltd., 52, Chertsey Road, Woking, Tel. 60.

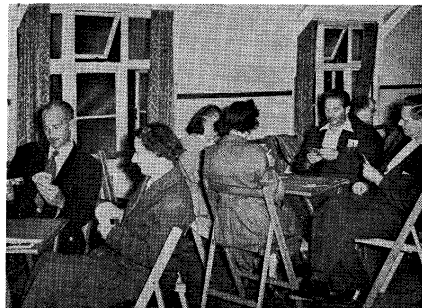
# SHEERWATER PYLON

Organ of the Sheerwater Community Association

Vol. 5 No. 8

MAY, 1957

Price 3d.



**EVENING PLEASURE**

**ACTIVITY - ENTERTAINMENT - ARTICLES**

**PRESENTING**

**SHEERWATER**

**COMMUNAL INTEREST**

# SHEERWATER PYLON

Organ of the Sheerwater Community Association

Vol. 5. No. 8

MAY, 1957

Price 3d.

*Sheerwater Angling Club*

*Proudly Present*

**"Dance of the Season"**

SATURDAY, 25th MAY, 1957

COMMUNITY CENTRE  
(Devonshire Avenue)

With LES RIDER AND HIS BAND

★ PRESENTATION OF CUPS AND PRIZES ★

NOVELTIES - BAR - COMPETITIONS

8-12 "THE ONE THAT DIDN'T GET AWAY" 2/6

Look for the

**BARGAINS**

in the

**SOCIETY'S WINDOWS**

**WOKING CO-OPERATIVE SOCIETY Ltd.**  
PERCY STREET :: WOKING

Phone - Woking 790

Page 2

## The Editor Writes

IN anticipation that this issue of the "Pylon" will be distributed on the first Sunday of May, my thanks to the printers for the extra work involved by the receipt of late copy. I do not intend to revert to the once haphazard distribution date, so I do ask all contributors to keep as near as possible to the copy date, which is always two weeks previous to that of distribution. Items of importance and Stop Press News I will allow for—holiday "forgetfulness" I will forgive—but late nights don't do me no good, so please have a heart. So much happening and so little space to report in, but there I must; the roof is repaired, and when other work is finished we can go ahead and make our Centre respectable at last. Any inconvenience during operations is regretted, but this time we hope to make a decent job of it and so attract the "cus-

tomers." My other "baby" is also progressing for the Recreation Ground is now officially open. More of this next month for rumour has it all is not well. Finally, a warm welcome to our newest affiliated factory—S.F.D., Ltd. News of their work and social welfare will be reported periodically, as also those of our other good friends, and we know that our relationship will be on the same happy and friendly basis.

In conclusion, I hope you like our new idea of giving advance dates for coming events of importance. All organisations please note, for this will greatly help in the clashing of dates; co-operation avoids competition. Special THIS MONTH is the first of a new series by the C.A. Social Committee and a Variety Show in aid of SPASTICS, given in Woking by the "Rebels" Skiffle Group. Your fullest support is asked.

**FAMILY FARE  
STORES**

175-177 WALTON ROAD  
Telephone WOKING 2256

**Grocers and Provision  
Merchants**

Daily deliveries in Sheerwater

**A. B. MAY**  
M.P.S., F.S.M.C.

Qualified  
Sight Testing Optician

Maybury Arch, Woking  
Telephone: WOKING 696

Page 3



## Sheerwater Gardening Association

**H**AVING made good use of the Easter period and the mild weather, it is now time to clear the late winter and spring greens and prepare the ground for re-cropping. Runner Beans may now be sown outdoors—harden off those sown under glass. Sow seeds of late greens (Broccoli and Savoys), Beet, Sweet Corn, Swedes, Turnips and Maincrop Carrots.

Sow and plant out Lettuce, also successive rows of Radish and Spinach. Thin out Parsnips and other seedlings, clean the ground around Strawberries, and check the Apple trees for Woolly Aphis. Keep the hoe going regularly around the plants and don't forget that an application of general fertiliser is most beneficial at this period. At the end of the month outdoor Tomatoes can be planted out in a sheltered area.

The Alpines in the rock garden should now be in full bloom, and bulbous plants can be removed for drying, being replaced by suitable annuals. If you have Forget-me-nots and don't want them to spread remove them to a corner and let them seed on one patch to give fresh plants later on. If the weather is damp give the lawn a sprinkling of Stimulax to live up to the grass.

Now is planting time for Bedding Plants—Asters, Stocks, Alyssum, Nemesis, Salvia, Petunias, etc., and we shall be having a very good stock of these during the next weeks, also all garden requisites. At present there is a large selection of Early Chrysanthemums—have you had yours?

May we remind you that purchases at the Hut will only be allowed to paid-up members, so if

Page 4

you haven't renewed yours for 1957 do so at once, to avoid disappointment. BOB GOOCH.

### Notice to all Members

The Annual General Meeting of the Sheerwater Gardening Association will be held in the Community Centre on Tuesday, May 28th. The meeting will commence at 8 p.m.

Agenda and balance sheet will be distributed to all members. Nominations for officers and committee, to be forwarded to the Secretary at 125b, Dartmouth Avenue, by Tuesday, May 21st, 1957.

### L.C.C. FRONT GARDEN COMPETITION (Spring, 1957)

Winners in the Spring Competition, judged on April 17th, are:—

1st Mr. L. C. Kinch, 15, Bentham Avenue.

2nd Mr. J. W. Kimble, 38, Bunyard Drive.

3rd Mr. W. A. Goodrum, 59, Blackmore Crescent.

4th Mr. R. A. Barnard, 49, Lambourne Crescent.

5th Mr. G. A. Knowler, 45, Bentham Avenue.

6th Mrs. —, Owlett, 82, Albert Drive.

The remaining six prizewinners are subject to reciprocity of the points, and names will be published when notification is received from the Area Officer of the L.C.C.

The Annual Show of the Gardening Association will be held this year in the Community Centre on SATURDAY, AUGUST 24th.

Prizes will again be awarded in many classes for Vegetables, Flowers and Fruit, and a schedule will be published later.

Winners at our "Easter Drive" were: Mesdames Bedell, Clamp, McCarthy, Paterson and Andrews, and Messrs. H. Dewdney, J. Dewdney, Baulf, Paterson, Hoseman, Ellerman, Kemp, Howard, Cousins and Conde. The Miniature was won by Mr. J. Dewdney, and Mr. R. Robinson won the competition. All the prizes were Easter gifts or novelties.

Several new suggestions for social functions to be held during the year were considered at the first meeting of the new Social Committee—these will gradually be included in the social programme and, if successful, continued as permanent features. It is the wish of the committee to cater as widely as possible for ALL residents, and it will help them in their choice of events if members indicate the type of show they want and are prepared to support. Please send your ideas to the Social Secretary, Mr. S. Clamp, 1, Murray Green, or contact him at the Community Centre.

On Saturday, May 18th, from 7.30 p.m. to 10.30 p.m., the Social Committee are putting on their first ROCK 'N' ROLL session. Held in the Community Centre with a reduced admission of 1s., and you are asked to bring your own favourite records, which will be included in the programme for you. So if you want a good evening's enjoyment, come along—all ages welcome.

**St. John Ambulance Brigade**  
Make a note of the date—TUESDAY, MAY 7th.

At 7 p.m. on this date the Woodham and Byfleet Division of the St. John Ambulance Brigade will be holding an enrolment meeting in the Community Centre for all young men and girls on the Sheerwater Estate, ages 11 to 18, who are interested in this excellent work.

Page 6

There will be films and short talks to explain the activities of the Brigade and the facilities for training with its members to help you obtain badges and certificates in other youth organisations.

The same evening, at 8 o'clock, all adults will be very welcome at the inaugural meeting of the Sheerwater Section. All of us are only too aware of the need for rudimentary knowledge of First Aid to deal with eventualities until the doctor arrives. You can learn with us with no obligation to join.

We do, of course, need new members to help with the various duties performed voluntarily by the section. These include attendance at many sports meetings, assistance at the hospitals, and the provision of ambulance crews.

Further details are being displayed locally. Please come along and give us a good attendance at our first Sheerwater meetings. Don't forget—the first meetings will be held in THE COMMUNITY CENTRE at 7 p.m. for youth and 8 p.m. for adults on Tuesday, May 7th. Further meetings have been arranged for Tuesday, May 21st, and Tuesday, June 4th. Same place—same times.

**A Personal Removal Service**  
**G. CHAMBERLAIN**  
(House and Removals), Ltd.  
'MON ABRI'  
HIGH STREET, HORSELL  
Phone: Woking 1663  
REMOVALS AND HAULAGE  
ANY TIME—ANYWHERE  
'Exchange Removals' Undertaken  
Estimates Free

## COMMUNITY CONTRIBUTIONS

### Old People's Club

**M**Y appeal for a radiogram has been answered in a more speedy and kindly manner than I had ever anticipated. The power of the "Pylon": the issue for April had only been out a matter of a few days when Mrs. Hague, of Wakehurst Path, called at the club and presented a radiogram to the old people.

Mrs. Hague, I now tell you that over sixty old folk members of the club will have your generous gesture in their minds for a very long time to come. The committee offers its heartfelt thanks, and your express wish that the old people should enjoy it will go down in our records.

Thank you very much, Mrs. Hague, and you, too, Mr. Baulf, for your kind and effectual publicity. This little revelation of the power of the "Pylon" must be gratifying to you.

A very happy and instructive visit was made to Cadby Hall, the home of Messrs. Lyons, and about 27 members enjoyed the exhibition of bakery, ice-cream making, and quite a host of other things which are so deftly carried out by this firm. Everyone had a great deal to say about how beautifully and carefully the products of Messrs. Lyons were made. Samples were handed round for tasty enjoyment.

Now to Mr. Hyde—I think you and your Skiffle Group are champion fellows to give us another show so quickly after our request for a repeat. You had a grand audience—over fifty attended. I hear: just advertises your popularity. Thanks also to the charming little dancers and to Mrs. Darvell.

Our first Outing—to Brighton—will take place on May 28th. The coach will start from Murray Green as usual, and we expect a party of at least 41. The members all pay 7s. for this outing, and what a fine time we shall have, especially if our Back Seat Choir is in good form. I am sure we are all looking forward to a really great day, and our pull-up on the way home at the Broadheath Inn, Horsham. The proprietor of this inn always gives us a real good time, and I hope he will be there on May 28th.

A. E. TIMMS.

### British Legion

A programme of Outings is being planned for the coming summer, commencing with a trip to Whipsnade Zoo. The date has been provisionally planned for the latter end of May, and all members who are desirous of going are asked to contact the Hon. Secretary on any Monday evening at the Scout Hut, Lambourne Crescent.

Our Darts Section has just completed a very successful season, and by popular vote we were awarded the Sportsman's Shield in the Woking and District Darts League. The Shield was presented by the President of the League, Mr. Dixon, who congratulated the team on a fine display of sportsmanship. Captain of the team, Mr. N. White, was the runner-up for the President's Cup and received an award for his achievement.

The popularity of our Thursday night Whist Drives continues, and the range of fine prizes to be won has been extended to include garden and household tools and other useful articles.

Page 5

### Sheerwater Youth Club

In response to a general request by our 100 members, it has been decided not to close down for the summer as is usual with most youth clubs. Thanks to the ready willingness of the youth organisers and the members of the committee, club nights will therefore continue as at present, with the use of the Community Centre when the school is not available.

When the September session begins it is planned to have a number of new Instruction Classes, in addition to those held at present. The classes will include Gym, Girls' Keep-Fit, Drama, Folk and Country Dancing, and such other useful activities as it is possible to arrange.

### Girls' Life Brigade

The 1st Sheerwater Company of the Girls' Life Brigade gave their fourth annual display last month to an audience of over 200. The presentation of awards and badges to more than 60 members of the Company showed the excellent work of the past year and the keenness of both the girls and their officers. The awards, presented by the visiting officer, Miss M. C. Nichols (Girl Guides District Commissioner), included small gifts for their collect-

ing efforts during Brigade Week to Jacqueline Chapman, Jean Kemp and Wendy Gordon-Smith. There were also four promotions—Privates Jean Collin and Diane Lee became Lance-Corporals and L/Cs Pat Willis and Pat Collin have been promoted to Corporals. The trophy cups, awarded on a points basis for work throughout the year, were won by Yvonne Field (Juniors), Wendy Gordon-Smith (Seniors), and Pat Willis (Pioneers), and Drill Medals for competition during the display were won by Irene Barnett, Doreen Barnes and Pat Willis.

A most delightful display included items in which the Company showed their prowess in the many subjects which form their training in religious, vocational and social work, and Major M. Patey, their officer-in-charge, is well justified in the obvious pride and affection which she has for the large number of girls who are proving the value of the many hours and hard work of those responsible for their organisation.

Miss M. C. Nichols, addressed the Company and congratulated them on their smartness, fitness, and efficiency, as also did the presiding Chairman, Mr. Colin Tunbridge, of the Byfleet Methodist Church. Prayers for the evening were given by the Rev. Robert Cleminson, and the display was concluded with a religious playlet, "The Golden Span," most impressive and well appropriate.

### 1st Sheerwater Scout Group

Another sad farewell last month for "Akela" (Miss Swain) has had to give up her post as Cub Master, owing to her removal from the district. Her parting leaves quite a gap in the organisation for she has run the Pack since it started in October, 1953—for most time on her own. Our "Thank You" is but

Page 7

## SHEERWATER PYLON

EDITORIAL OFFICES:  
108, ST. MICHAEL'S ROAD,  
SHEERWATER.

Next distribution:  
Sunday, June 2nd.

Latest date for copy for next issue:  
Saturday, May 18th.

Winners at our "Easter Drive" were: Mesdames Bedell, Clamp, McCarthy, Paterson and Andrews, and Messrs. H. Dewdney, J. Dewdney, Baull, Paterson, Hoseman, Ellerman, Kemp, Howard, Cousins and Conde. The Miniature was won by Mr. J. Dewdney, and Mr. R. Robinson won the competition. All the prizes were Easter gifts or novelties.

Several new suggestions for social functions to be held during the year were considered at the first meeting of the new Social Committee—these will gradually be included in the social programme and, if successful, continued as permanent features. It is the wish of the committee to cater as widely as possible for ALL residents, and it will help them in their choice of events if members indicate the type of show they want and are prepared to support. Please send your ideas to the Social Secretary: Mr. S. Clamp, 1, Murray Green, or contact him at the Community Centre.

On Saturday, May 18th, from 7.30 p.m. to 10.30 p.m., the Social Committee are putting on their first ROCK 'N' ROLL session. Held in the Community Centre with a reduced admission of 1s., and you are asked to bring your own favourite records, which will be included in the programme for you. So if you want a good evening's enjoyment, come along—all ages welcome.

**St. John Ambulance Brigade**  
Make a note of the date—TUESDAY, MAY 7th.  
At 7 p.m. on this date the Woodham and Byfleet Division of the St. John Ambulance Brigade will be holding an enrolment meeting in the Community Centre for all young men and girls on the Sheerwater Estate, ages 11 to 18, who are interested in this excellent work.

Page 6

There will be films and short talks to explain the activities of the Brigade and the facilities for training with its members to help you obtain badges and certificates in other youth organisations.

The same evening, at 8 o'clock, all adults will be very welcome at the inaugural meeting of the Sheerwater Section. All of us are only too aware of the need for rudimentary knowledge of First Aid to deal with eventualities until the doctor arrives. You can learn with us with no obligation to join.

We do, of course, need new members to help with the various duties performed voluntarily by the section. These include attendance at many sports meetings, assistance at the hospitals, and the provision of ambulance crews.

Further details are being displayed locally. Please come along and give us a good attendance at our first Sheerwater meetings. Don't forget—the first meetings will be held in THE COMMUNITY CENTRE at 7 p.m. for youth and 8 p.m. for adults on Tuesday, May 7th. Further meetings have been arranged for Tuesday, May 21st, and Tuesday, June 4th. Same place—same times.

**A Personal Removal Service**  
**G. CHAMBERLAIN**  
(Household and Removals), Ltd.  
**MON ABRI, HIGH STREET, HORSSELL**  
Phone: Woking 1683  
REMOVALS AND HAULAGE  
ANY TIME—ANYWHERE  
**'Exchange Removals' Undertaken**  
Estimates Free

**Sheerwater Youth Club**

In response to general request by our 100 members, it has been decided not to close down for the summer as is usual with most youth clubs. Thanks to the ready willingness of the youth organisers and the members of the committee, club nights will therefore continue as at present, with the use of the Community Centre when the school is not available.

When the September session begins it is planned to have a number of new Instruction Classes, in addition to those held at present. The classes will include Gym, Girls' Keep-Fit, Drama, Folk and Country Dancing, and such other useful activities as it is possible to arrange.

**Girls' Life Brigade**

The 1st Sheerwater Company of the Girls' Life Brigade gave their fourth annual display last month to an audience of over 200. The presentation of awards and badges to more than 60 members of the Company showed the excellent work of the past year and the keenness of both the girls and their officers. The awards, presented by the visiting officer, Miss M. C. Nichols (Girl Guides District Commissioner), included small gifts for their collected

efforts during Brigade Week to Jacqueline Chapman, Jean Kemp and Wendy Gordon-Smith. There were also four promotions—Privates Jean Codlin and Diane Lee became Lance-Corporals and L/C's Pat Willis and Pat Codlin have been promoted to Corporals. The trophy cups, awarded on a points basis for work throughout the year, were won by Yvonne Field (Juniors), Wendy Gordon-Smith (Seniors), and Pat Willis (Pioneers), and Drill Medals for competition during the display were won by Irene Barnett, Doreen Barnes and Pat Willis.

A most delightful display included items in which the Company showed their prowess in the many subjects which form their training in religious, vocational and social work, and Major M. Patey, their officer-in-charge, is well justified in the obvious pride and affection which she has for the large number of girls who are proving the value of the many hours and hard work of those responsible for their organisation.

Miss M. C. Nichols, addressed the Company and congratulated them on their smartness, fitness, and efficiency, as also did the presiding Chairman, Mr. Colin Tunbridge, of the Byfleet Methodist Church. Prayers for the evening were given by the Rev. Robert Cleminson, and the display was concluded with a religious playlet, "The Golden Span," most impressive and well appropriate.

**1st Sheerwater Scout Group**

Another sad farewell last month for "Akela" (Miss Swain) has had to give up her post as Cub Master, owing to her removal from the district. Her parting leaves quite a gap in the organisation for she has run the Pack since it started in October, 1953—for most time on her own. Our "Thank You" is but

Page 7



Courtesy of "Woking News and Mail"

[Photo: A. G. Scott.]

**FAMILIARITY** breeds contempt: how very true of many professions in which human emotion, personal reaction or even individual instinct must of necessity be seconded to performance and presentation in strict accordance with man-made principles. The rules of the profession may vary widely, often conflictingly, but the slightest display of "something different" is regarded as revolutionary; the possession of great wealth or none at all may establish independence, but for the majority of us who come into neither category it is conformity or else . . .

Fortunately we do have occasional opportunity to depart from everyday formality and lose ourselves in the realm of fantasy, each in accordance with his or her natural desire. In this we may be helped by others with that all too rare gift of expression of innermost thought: a well-written book or play, a piece of music or a painting, poetry or composition, sculpture or architecture. These and many others not only capture our imagination but also give stimulus in their refreshing departure from the dull world of reality.

How often do we see or hear something and say, "I like that," but when asked "Why?" can give no logical explanation. Does it really matter, or is not the fact that pleasure has been received sufficient in itself? Whether we say it or only think it, there is appreciation in all of us: appreciation by the creator for the power to create, appreciation by the expressor for the gift of expression; and for every one of us who form the vast audience of the world there is appreciation in

Page 10

our daily deeds for God's gift to mankind.

Presented by the Dramatic Society of the Sheerwater County Secondary School, "A Hand Through Time" indeed proved to be a play with a difference. Over the three nights of performance about 750 people saw this play which, in the words of its author, Mr. C. F. R. Tiller, has the main theme of "The Influence on the Present of the Future."

By no means an eminent dramatic critic—just one of the audience at the back of the hall on the last night of performance—here are my personal impressions of the play, the production, and audience reaction.

The scene throughout the play is a clearing in Fonthill Abbey Woods, and when the curtains opened to a setting and décor giving excellent impression, with lighting effects and musical arrangement giving an added touch of reality, the lead-in was complete. Scene 1 was slightly heavy going, even to my mind, for an experienced professional cast, and credit is given to those responsible for raising the tone to a higher level at the scene's end. In the second scene the time switched back from 1944 to 1844, but the tone of the play and quality of performance greatly advanced, retaining attention throughout. The remaining two scenes in this first act again switched the time element—first back to 1944 and then to 1844—and I had the feeling of slight confusion, shared by the majority around me, in no way a reflection on the acting or dictum, which remained of excellent qual-

ity. I found the musical sequences slightly distracting at times when a greater concentration was necessary to follow the word sequence—a point of note.

Again to 1944 in the first three scenes of Act II, and again I found the play lifted to a higher level, easier to follow and consequently

more easy to appreciate. The acting throughout was really good, in particular the meeting of Anna and Sylvia portrayed by Linda Williams and June Keyland. Both these young girls have a strong sense of the dramatic and played their parts with feeling and intensity. The last scene in this act

Page 11

reverted to 1844 and fell a little short of the previous higher standard.

So to the last act, again with its four scenes, opening well in the first and building up to a dramatic climax in the second. With the coming of the storm, in which both music and lighting added considerably to the rising tension of the audience, I well forgot the ups and downs of the previous acts and so, apparently, had everyone else, for there was a climactic tenseness released by spontaneous applause at the curtain drop. Full marks in both these scenes to the whole cast, with minor faults readily forgiven in a performance of West-End quality, and I really mean that.

Now to Scenes III and IV—anti-climax. What an excellent opportunity was missed to create in this new play one for the "top-shelf." I had the impression that even the cast was feeling disappointment at the sudden drop from intensity to the ordinary. In all fairness, the use of these two scenes to enlarge upon the theme and bring in the links between the three periods of time involved had to be added, but a slight alteration in the earlier acts might have portrayed these equally as well, leaving the climax of Scene II, with just little addition to give excellent ending for "the play with a difference."

To author and producer, Mr. C. F. R. Tiller, congratulations for your courageous portrayal of so difficult a theme and for the most part a dialogue of good quality.

In addition to the outstanding performances of June Keyland and Linda Williams, that also of Lesley Embury is worthy of a special mention, and in the minor roles Joy Cheesmur took honours, closely followed by Marion Blanchard, Bar-

Page 12

bara Sherwood, Anthony French, Jennifer Keene, Jill Ripley and G. Hansant. All the other parts were well portrayed by Wendy Scott, Patricia Hughes, Ann Thomas, Beryl Field, J. Rowse, J. Murray, R. Walker, G. Bell, A. Stratford, F. Barry, L. Mason, M. Maguire and A. Warner.

Setting and décor by Mr. I. B. Beattie and lighting by Messrs. E. V. King and E. Hall—excellent both in construction and effect.

Costumes well made and impressive—the work of Mrs. D. E. Draper and Mr. J. W. Carlton.

Stage management, Mr. W. A. Brown; make-up, Mrs. M. Hepple, Mr. J. W. Carlton, Mr. I. B. Beattie, Mr. H. Whelan, and Mr. C. Tiller; business management, Mr. R. B. Brooks.

Numerous other pupils and members of the staff also assisted in the production of "A Hand Through Time," both before and during production.

#### TABLE TENNIS

Sheerwater C.A. Challenge Cup and Round results:

Catholic Men's Guild beat Sheerwater Youth Club "A" (holders) 5-0.

Wandsworth Electric beat St. Michael's Men's Club 5-4.

Semi-Finals: Catholic Men's Guild beat Youth Club Management Committee 5-2.

Wandsworth Electric v. Community Association. (Played May 1st—result not to hand.)

The Final will be staged at the County Secondary School on Tuesday, May 7th, at 7.30 p.m. (by kind permission of the Youth Club). All are welcome to come along and see what is certain to be a keenly fought contest.

## SHEERWATER YOUTH CENTRE BUILDING FUND

Dear Friends,

The above fund has been set up with the objective of being in a position to provide the Youth of the Estate with a Centre of their own, and to achieve this the Management Committee have decided that some £4,000 will be needed within the next four years. This is a colossal sum even in these days of a devalued pound, but when you realise that in 1962 there will be nearly 1,200 teenagers on the Estate, you will realise that something has got to be done to enable these young people to meet, somewhere for them to play and get together to help one another.

From time to time the committee will be running various functions in order to raise these funds. Our aim is not simply to ask for charity, although any gifts will be welcomed of course, but to give those who wish to help a chance of getting something for their money, and we promise that we shall endeavour to do so on every occasion.

The first and immediate task is, however, despite what has been said in the preceding paragraph, a purely charitable affair. We will in the next month be sending out to every household on the Estate a card which has room on it for ten pennies. We are asking that in this initial item every household will endeavour to give to the committee a good start by filling in these cards. They will, of course, be collected by authorised members of the committee, who will carry cards of authorisation. Please in this task help us to get off to a good start.

There will, of course, be many other functions and ideas, but these will, as we have said before, be run

with the idea of giving you value for money and also with the idea of raising funds for this very worthy cause.

The constitution of the above fund ensures that the committee shall report progress to a public meeting twice per year, and of course we shall from time to time publish a statement of funds and accounts. With the good services of the Editor of the "Pylon" we will show you each month exactly what amount of money we have got in hand. (At the moment we have something like £58.)

When we have actually got enough money to start, we shall of course get going on the building, and as the money rolls in we shall continue to build and later to equip until we have a Youth Centre to be proud of. There is such a Youth Centre in being in Esher, and we hope that if you are interested in seeing what can be done you will write to us, and we shall try to fix up a party to go along to see the Esher Centre.

If you should wish to contribute without waiting for the ideas we have to start, please remit to the Treasurer, 12a, Loder Close. If you want to know more about it, please do not hesitate to call on or write to the Secretary, at 73, Albert Drive. If you wish to help in any way, either on the committee or with voluntary labour with the building as soon as we start, then please send your name to the Secretary.

In anticipation,

Yours sincerely,

C. HOWARD, Chairman,  
S. WEST, Secretary.

Page 13

## SHEERWATER AMATEUR BOXING CLUB

KEITH MOODY, pupil of Monmouth Hill School and a member of the Sheerwater Amateur Boxing Club, is this year's National Schoolboy Class "B" Champion at 7st. 10lb.

Keith, who is the son of the Club coach, Mr. Frank Moody, had his first match in the Championship which he has just won as far back as last December—one of the 30,000 entries at 34 weights and age groups. His first major win was when he beat A. Jackson (Surbiton Grammar) to take the West Surrey Championship, followed by the Surrey Championship when he beat J. Troy (Holy Family School) at Camberley. His success here helped his school to win the "Horace Smith" Shield for the school with the best record in Surrey.

At Northfleet, Keith beat B. Holdam, the Kent champion, to win the Southern Regional Semi-final and became Southern Region champion when he beat J. Madgewick (Hampshire champion) at Southampton.

To Wembley, where he won the National Quarter-finals, beating R. Thomas (Middlesex champion) on points, then a long trip to Bristol for his win in the National Semi-finals over C. Chesterton (London champion), again on points.

The big night of the National Championships was at the Empress Hall, Earls Court, where, before a crowd of 8,000 spectators, Keith met R. Patterson, of Coventry, the Northern and Midlands champion.

Keith, boxing in his usual classical English style, piled up the points against an opponent who was

a worthy finalist and a boxer of some class. Patterson, however, never found the answer to the devastating hard straight left that Keith rammed through his guard time and time again, with both



KEITH MOODY  
(Courtesy of "Woking News and Mail.")

speed and power, and the fight ended with Keith Moody the 7st. 10lb. "Class B" National Schoolboy Champion of Great Britain. The handsome plaque was presented to Keith by Dick McTaggart, the Olympic Gold Medalist.

It was hoped to put on a show at the Secondary School, at which the Sheerwater A.B.C. could present Keith with a silver cup, suitably in-

scribed, but the Club were refused permission to use the school for a show, so we asked our friends and neighbours, the Woking Amateur Boxing Club, if the cup could be presented at their show on April 10th, and the presentation was made on behalf of the Club by Mr. Bob Turner, a member of the Woking Club Committee.

In this open tournament of the Woking Club two of the Sheerwater Seniors were worthy winners. Ray Lewis (lightweight) stopped W. Haggart, of Onslow, in the second round, and our bearded light-heavyweight, Peter Sibbick, easily out-pointed A. Walsh, also of Onslow. These followed our successes in the previous Woking show when Danny Rees beat J. Joannou, the London "C" Class champion from Battersea, in a classical flyweight bout; Tony Hoath, featherweight, beat C. Fuller (Battersea) in a rip-snorting all action fight; and Ray Lewis beat A. Raynor (Battersea) in another all-action contest. Our only loser was George Weston, middleweight, who faded after a strong start against G. Hay (Horley).

On April 13th we took eight Juniors to Worthing for a private Charity Show. Our spectators were disabled ex-Service men at Gifford House, one of the Star and Garter Homes, and after seeing the way in which our audience thoroughly enjoyed the boxing we returned to Sheerwater with a feeling of having done a worthwhile job. The outstanding winner of the evening was little Jimmy Anderson, weight 4ft. 8lb., who stopped an opponent bigger and heavier in the second round. Jimmy is another champion in the making for the Sheerwater A.B.C.

The season is now drawing to a close, and in this our second year as a club of the Amateur Boxing

Association we have been even more successful than in our first year. I think we can look forward to an even better season for 1957-1958.

On Saturday, May 11th, we are holding a Junior Club Show in St. Michael's Hall. This is in place of the Senior Show we were to have had at the school. The Junior Club Show will start at 7 p.m.

E. T. KINGETT  
(Founder, Sheerwater A.B.C.).

**MAY & THOMSON**  
51 Dartmouth Avenue

ALL MEDICAL AND TOILET REQUIREMENTS

FOR THE RECORD  
IT'S  
**ROCK 'N' ROLL**  
NON-STOP  
**SESSION**  
7.30-10.30  
**SAT., 18th MAY, 1957**  
COMMUNITY CENTRE

ADMISSION  
**BOB A NOB**

Bring Your Favourite Discs  
We'll Play 'em  
The Floor is Yours

Page 13

# CHARLIE

By "CASTER"

"When next he tries to pull thee out, God give thee strength thou little trout—to pull young Fisher in."

IT was a mild day with feathery cloud, and the water of the lake still and unrippled, just the sort of day when one might contact Charlie.

Bob Jones had heard of Charlie . . . an enormous pike with a notorious reputation as the breaker of rods and hearts. Charlie had evaded capture for very many years and the tales about him were legendary.

For three hours Bob worked the deeps with a large spoon, taking two pike of about eight pounds each and feeling quite satisfied with himself. As he relaxed in the autumn sunshine to enjoy a sandwich there was a loud splash which sent the water rocking and a moon-screaming over the surface. About fifty yards away, in the shallow water by the reeds . . . Charlie!

Bob dropped his sandwich, grabbed his rod and gaff, and hurried along the bank. As he neared the spot his steps became slower and stealthier.

He felt calmer now that the time had come. At first, Bob could see only patches of weed and dying reeds, then he saw him, and his heart almost leapt out of his mouth. Charlie was lying with his tail hidden by a clump of weed and only two-thirds of him was visible . . . two-thirds being nearly 4ft. long.

With trembling fingers Bob changed his spoon for a bright red floating plug; too shallow here for a spoon, he reasoned, and the cast had to be an accurate one. His

Page 16

plug sailed out and dropped about twenty feet beyond Charlie's nose—a good cast.

Bob gave the reel a few turns and raised the rod tip. The plug responded by a quick zig-zag dive and came to the surface about 6ft. from the fish. The next dive should do it, thought Bob, as he lifted the rod and prepared to wind in line.

His reel had turned but twice when the water erupted and his rod was almost wrenched from his hand as Charlie lunged for the bait. In a flash forty yards of line screamed from the reel as the fish ploughed across the lake for deep water. Putting on a severe side strain, Bob turned the fish, reeling as fast as he could. Ten yards out and Charlie shot into the air, coming down with a terrifying smack on the surface of the water, then streaked across to the other side of the lake.

After nearly an hour Bob, almost worn out trying to control his bucking, jumping rod, got his first good look at the fish. It was heavily circling on a tight line five yards from the bank and, tired and spent, Charlie allowed himself to be drawn in under the rod tip. He was a good 4ft. long, fat as a hog, and Bob guessed his weight at over forty pounds . . . very near to the record.

Steering the fish closer, Bob bent for the gaff. Charlie seemed to watch his every move with baleful eyes. Carefully Bob set the gaff under the pike's lower jaw and with a deep breath drove the point

home, at the same time dropping his rod to the bank, then dragged the fish up the sloping bank with both hands. The battle was over, and Bob sank wearily to the grass beside his fish and massaged his aching wrists.

After a short rest, Bob gingerly removed the plug from Charlie's cruel mouth. He gazed down at the fish and Charlie seemed to leer back at him, then suddenly exploded into a series of twisting convulsions, slid down the bank, and into water again with a terrific splash. Bob stared despairingly as it moved slowly across the water.

That's that!, he thought. But I fought and beat him and I had him on the bank. I wonder who'll believe me?

The only proof he had was the battered red plug which he held in his hand and the memory of Charlie's sardonic sneer as he finally disappeared beneath the surface.

## ALPINE LAUNDRY

Eve Road, Woking (nr. Woking entrance to Estate)

### FULLY FINISHED SERVICE

Collect WEDNESDAY mornings  
Deliver SATURDAY mornings

### BAGWASH SERVICE (daily)

4/- 18lb. dry weight  
Collect MONDAY  
Deliver TUESDAY

Collect WEDNESDAY  
Deliver THURSDAY

### DRY CLEANING 3 DAY SERVICE

Telephone — Woking 1719

## Electro-Chemical Eng. Co., Ltd.

The 10,000 sq. ft. extension to our works is substantially complete, some five weeks ahead of the programme date. This is to a large extent due to the exceptionally fine winter which has resulted in virtually no delays in building through bad weather. The increased space available has allowed assembly of the first of two large automatic plating machines for I.A.T. (Turn described in the December issue of "Pylon"), to be started. It is planned to invite a number of representatives of the automobile trade in this country to see this 150ft. long machine on mechanical test.

Export business is booming. March was a record month for the shipment of chemicals, and we have just received an order for a £50,000 automatic plating installation for an Indian firm of cycle manufacturers. This will be the first machine of this type that we have supplied to India and will, we hope, be the first of a number to be supplied to a country where industrialisation is proceeding rapidly. We arranged to show a small automatic machine at the Basle Fair in April and a standard "Junior" automatic at the B.L.F. in an attempt to increase export business.

Members of our company certainly see the world; quite recently two engineers were in Italy, a chemist in Holland and a director in India. Similarly we receive visits from many people from overseas. It is interesting to note that without exception they comment favourably on the lay-out and general appearance of the Sheerwater Estate. Our garden is, we like to feel, contributing to the amenities and helping to make the Industrial Estate a pleasant place to work in.

Page 17

## WHAT — WHERE — WHEN

St. John Ambulance Brigade  
INAUGURAL MEETINGS  
Community Centre  
TUESDAY, MAY 7th, 7 and 8 p.m. TUESDAY, MAY 7th, 7-30 p.m.

1st Sheerwater Scout Group  
WHIST DRIVE  
The Hut, Lambourne Crescent  
TUESDAY, MAY 7th, 8 p.m.

WOKING URBAN DISTRICT COUNCIL ELECTIONS  
SATURDAY, MAY 11th. Usual Polling Stations. Don't forget to vote.

1st Sheerwater Scout Group  
ANNUAL GENERAL MEETING  
The Hut, Lambourne Crescent  
WEDNESDAY, MAY 15th, 8 p.m.

Community Association  
RECORD ROCK 'N' ROLL  
The Community Centre  
SATURDAY, MAY 18th, 7-30 p.m.

The Angling Club  
"DANCE OF THE SEASON"  
The Community Centre  
SATURDAY, MAY 25th, 8 p.m.

POPULAR WHIST DRIVE  
The Youth Club  
EACH WEDNESDAY—8 p.m.  
Community Centre — Devonshire Avenue  
For fuller details see individual notices, Support and enjoy.

DATES FOR DIARY  
Saturday, June 8th: "FAMILY NIGHT." Open Talent Competition.  
Tuesday, June 11th: OLD PEOPLE'S SHOW. All over 60's invited.  
Tuesday, June 25th: C.A. QUARTERLY GENERAL MEETING.  
Tuesday, July 9th: \*SHEERWATER STAR SHOW\*. Not to be missed.  
Saturday, August 24th: THE GARDENING SHOW—Vegetables, Flowers, Fruit.

Page 18

## HOOVER LTD.

are always interested in YOU

Putting it mildly—the Hoover organisation is enormous; but not too vast to recognise the fact that it owes its continued prosperity in no small part to its policy of keeping faith with the British public. That is why Hoover Service is acknowledged as having no equal the world over.

CONTACT YOUR LOCAL  
HOOVER  
REPRESENTATIVE

J. R. HARGREAVES

by telephone: G. Duder Gray Woking 3030  
S.E. Electricity Board Woking 1700  
or message at:  
9, Albert Drive, Sheerwater

## BELL & BUTLER

Your Local Quality Bakers & Confectioners

at

55 Dartmouth Avenue, Sheerwater

and

119 CHERTSEY ROAD  
Tel. WOKING 1143

BROOKWOOD  
Tel. BKD. 3128

HIGH STREET, HORSELL  
Tel. WOKING 1143

THE PARADE, WESTFIELD  
Tel. WOKING 4349

QUALITY GOODS AT THE RIGHT PRICES

Page 19

ST. JOHN'S AMBULANCE BRIGADE

INVITE YOU TO :-

A FILM SHOW on FIRST AID for YOUNG PEOPLE on 7th MAY at 7 P.M.

ALSO a FIRST AID DEMONSTRATION for ADULTS,  
carrying on from the first, at 8 P.M.

SHEERWATER COMMUNITY CENTRE.

FREE ADMISSION.

NO OBLIGATION TO JOIN

HERITAGE WALKS ARCHIVE DOCUMENT